



# A

*LISTA COMPONENTI MACCHINA  
MACHINE COMPONENT LIST  
LISTE DES COMPOSANTS DE LA MACHINE  
LISTA COMPONENTES MÁQUINA*

# B

*LISTA COMPONENTI FERRO DA STIRO  
IRON COMPONENT LIST  
LISTE DES COMPOSANTS FER A REPASSER  
LISTA COMPONENTES PLANCHA*

# C

*LISTA COMPONENTI POMPA TRIFASE  
THREEPHASE PUMP COMPONENT LIST  
LISTE DES COMPOSANTS DE LA POMPE TRIPHASEE  
LISTA COMPONENTES BOMBA TRIFÁSICA*

# D

*LISTA COMPONENTI ELETTRICI  
ELECTRIC COMPONENT LIST  
LISTE DES COMPOSANTS ELECTRIQUES  
LISTA COMPONENTES ELÉCTRICOS*

# E

*SCHEMA IMPIANTO ELETTRICO  
ELECTRIC DIAGRAM  
SCHEMA ELECTRIQUE  
ESQUEMA INSTALACIÓN ELÉCTRICA*

# F

*LISTA COMPONENTI PNEUMATICI  
PNEUMATIC COMPONENT LIST  
LISTE DES COMPOSANTS PNEUMATIQUES  
LISTA COMPONENTES NEUMÁTICOS*

# G

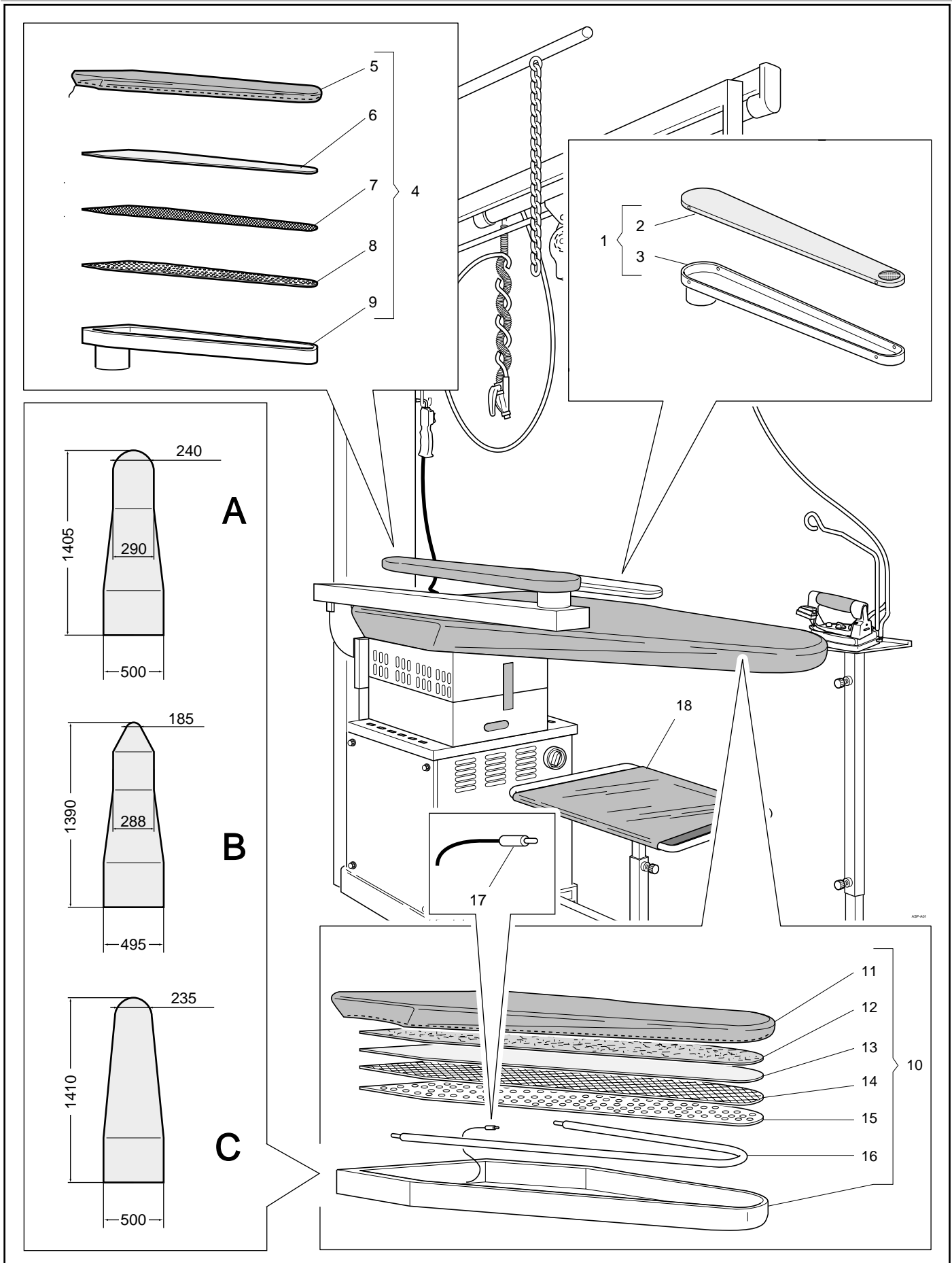
*SCHEMA IMPIANTO PNEUMATICO  
PNEUMATIC SYSTEM SCHEME  
SCHEMA INSTALLATION PNEUMATIQUE  
ESQUEMA INSTALACIÓN NEUMÁTICA*

# H

*SCHEMA IMPIANTO IDRAULICO  
HYDRAULIC SYSTEM SCHEME  
SCHEMA INSTALLATION HYDRAULIQUE  
ESQUEMA INSTALACIÓN HIDRÁULICA*

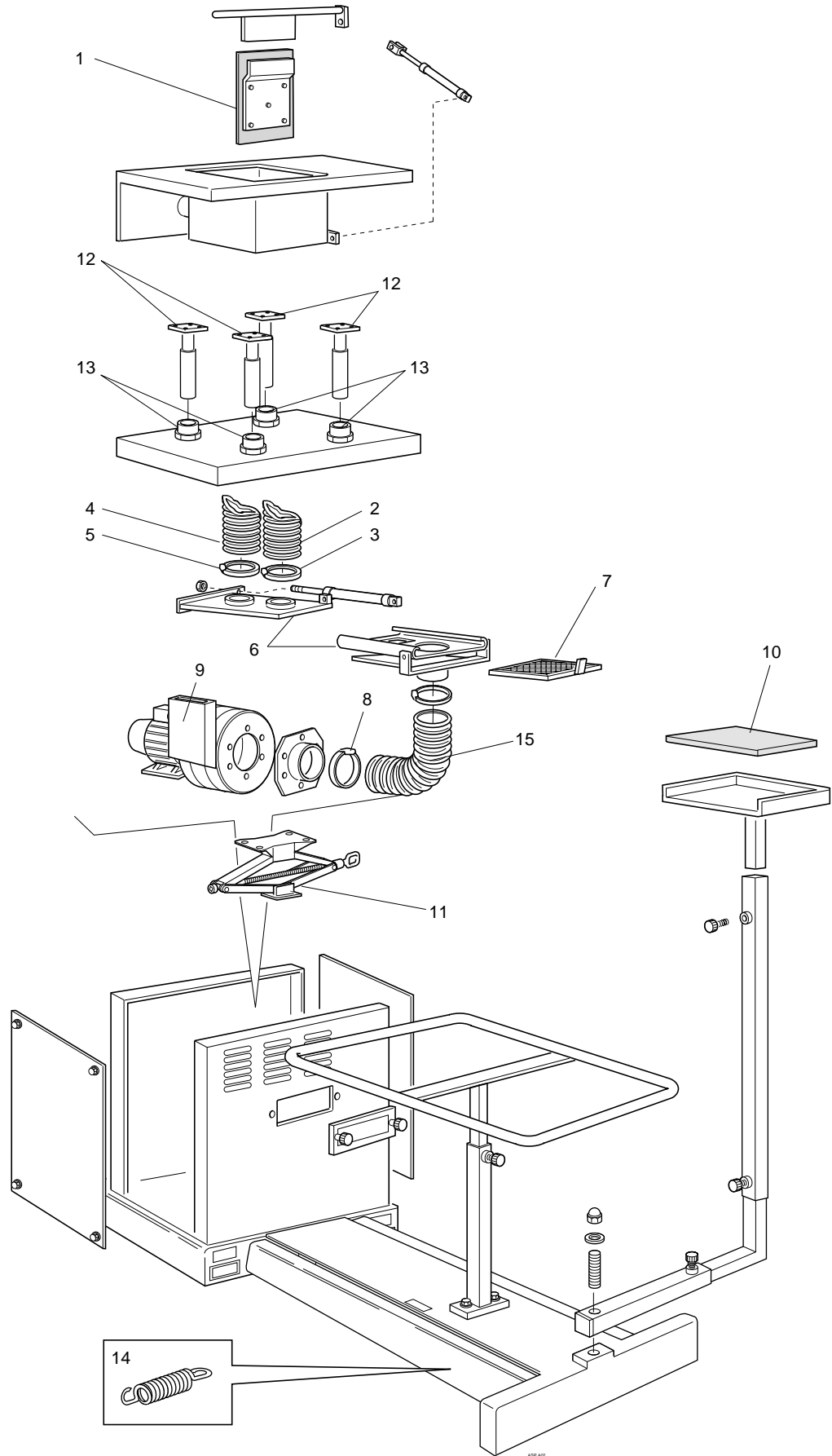
# I

*LISTA ADESIVI MACCHINA  
MACHINE ADHESIVE LIST  
LISTE DES ADHESIFS DE LA MACHINE  
LISTA ADHESIVOS MÁQUINA*





		<b>I</b>	<b>GB</b>	<b>F</b>	<b>E</b>
Nr	Cod.	Descrizione	Description	Description	Descripción
1	001.06	Bracciolo smacchiante	Cleaning sleeve board	Jeannette détachage	Brazo para la eliminación de las manchas
2	153.03A	Piano INOX	Stainless steel board	Plan INOX	Superficie INOX
3	153.03B	Supporto piano INOX	Stainless steel board support	Support plan INOX	Soporte superficie INOX
4	001.07	Bracciolo maniche	Sleeve board	Jeannette repassage	Brazo mangas
5	112.06	Telo	Cloth	Toile	Tela
6	113.10	Schiumato (bleu)	Foam (bleu)	Padding (bleu)	Espuma (azul)
7	113.03	Mollettone (bianco)	Flannel (white)	Molleton (blanche)	Muletón (blanco)
8	153.01A	Lamiera forata	Punched plate	Tôle perforée	Chapa perforada
9	153.01B	Vaschetta bracciolo	Sleeve board hollow seat	Support jeannette	Bandeja brazo
10	178.01A	Piano di lavoro A	Work table A	Plan de travail A	Superficie de trabajo A
	178.01B	Piano di lavoro B	Work table B	Plan de travail B	Superficie de trabajo B
	178.01C	Piano di lavoro C	Work table C	Plan de travail C	Superficie de trabajo C
11	112.07	Copertina piano	Board cover	Housse	Cubierta superficie
12	113.13	Schiumato	Foam	Padding	Espuma
13	113.15	Mollettone	Flannel	Molleton	Muletón
14	112.12	Meraclon	Meraclon	Grillage teflon	Meraclon
15	001.25	Lamiera forata	Punched plate	Tôle perforée	Chapa perforada
16	124.39	Resistenza piano 1000W	Board resistance 1000 W	Résistance plan 1000W	Resistencia superficie 1000W
17	147.02	Sonda 120°	120° probe	Sonde 120°	Sonda 120°
18	112.05	Copertura grembialina	Cover for garment support	Housse barceau	Cobertura soporte frontal





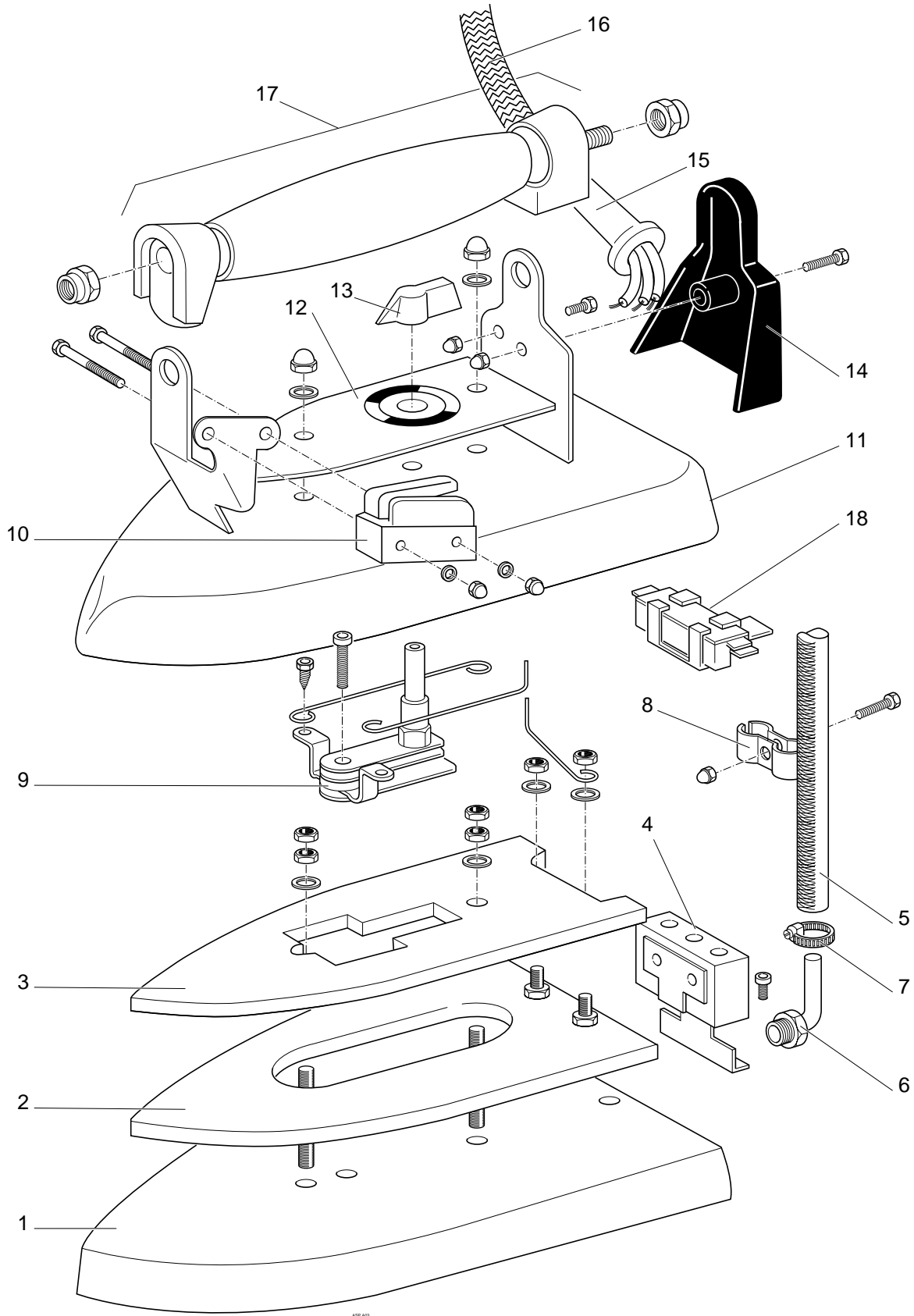
		<b>I</b>	<b>GB</b>	<b>F</b>	<b>E</b>
Nr	Cod.	Descrizione	Description	Description	Descripción
1	-	Feltro pala	Blade foam	Mousse volet	Fieltro pala
2	130.24	Tubo telato Ø150	Linen-faced pipe Ø150	Tuyau toilé Ø150	Tubo forrado Ø 150
3	121.01	Fascetta Ø140-160	Clamp Ø140-160	Collier Ø140-160	Abrazadera Ø 140-160
4	130.21	Tubo telato Ø121	Linen-faced pipe Ø121	Tube toilé Ø121	Tubo forrado Ø 121
5	121.01	Fascetta Ø120-130	Clamp Ø120-130	Collier Ø120-130	Abrazadera Ø 120-130
6	101.12	Ghigliottina	Guillotine	Guillotine	Guillotina
7	101.12B	Filtro	Filter	Filtre	Filtro
8	121.01	Fascetta Ø140-160	Clamp Ø140-160	Collier Ø140-160	Abrazadera Ø 140-160
9	108.03	Motore	Motor	Repose-fer	Motor
10	107.09	Appoggiaferro	Iron well	Appuie-fer	Apoya - plancha
11	173.02	Cric a pantografo	Pantograph crick	Cric	Cric de pantógrafo
12	601.09 LAV	Cannocchiale a maschio	Foot	Pied	Pie
13	601.10 LAV	Cannocchiale a femmina	Bush	Douille	Casquillo hembra
14	131.08	Molla pedale	Pedal spring	Ressort pédale	Muelle pedal
15	130.24	Tubo telato Ø150	Frame pipe Ø150	Tuyau toilé Ø150	Tubo forrado Ø 150



- I** LISTA COMPONENTI FERRO DA STIRO
- GB** IRON COMPONENT LIST
- F** LISTE DES COMPOSANTS FER A REPASSER
- E** LISTA COMPONENTES PLANCHA

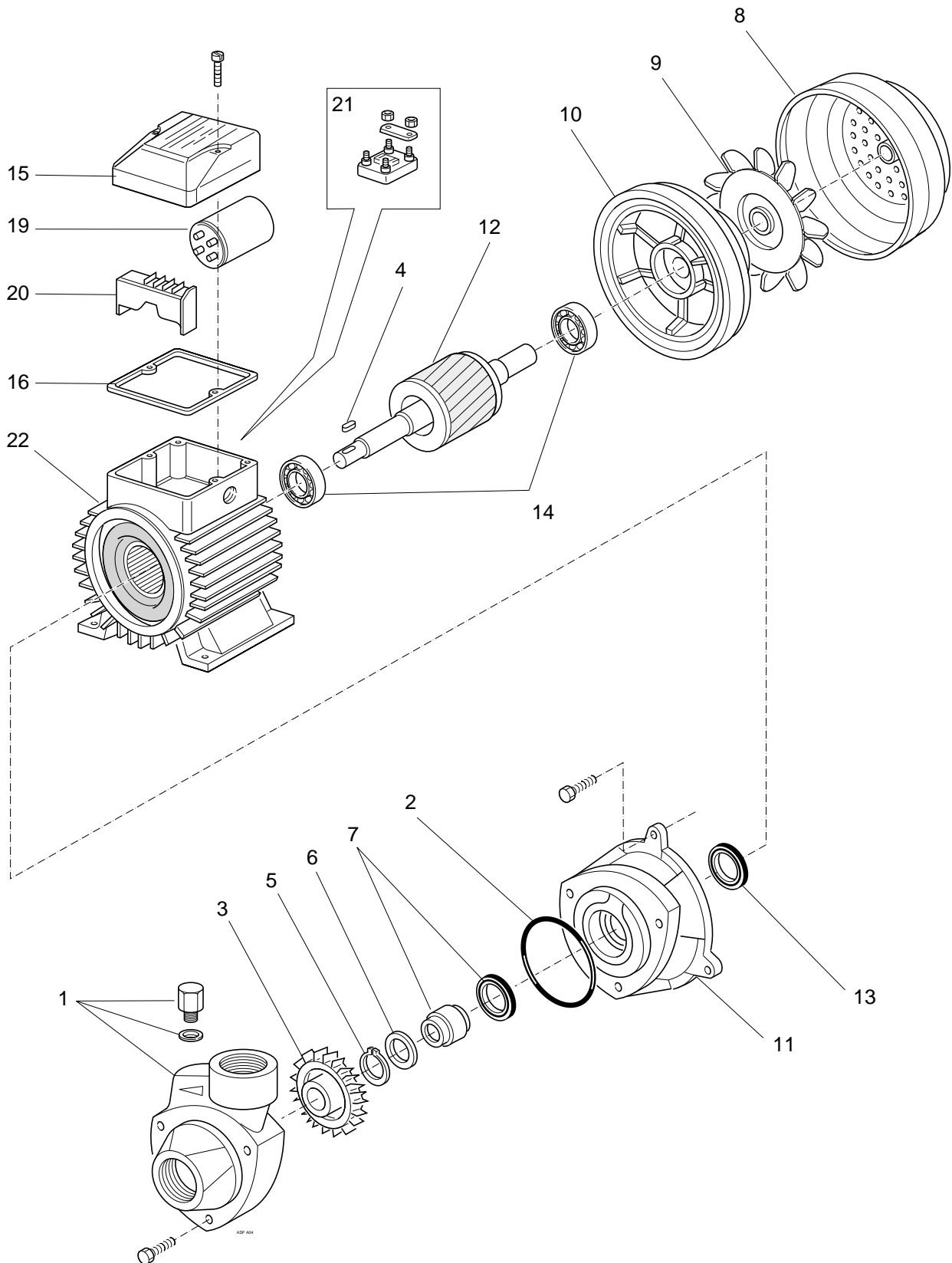
Allegato  
Enclosure  
Annexe  
Anexo

B





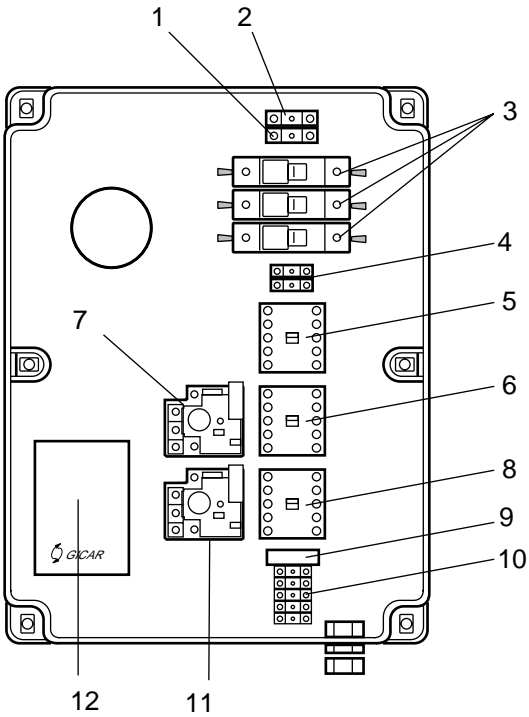
		<b>I</b>	<b>GB</b>	<b>F</b>	<b>E</b>
Nr	Cod.	Descrizione	Description	Description	Descripción
<b>1</b>	107.10 107.31 107.34 107.35	Piastra radiante	Radiant plate	Plaque chauffante	Placa radiante
<b>2</b>	124.43	Resistenza corazzata	Protected resistance	Résistance cuirassée	Resistencia acorazada
<b>3</b>	107.30	Zavorra	Ballast	Plaque alu	Lastre
<b>4</b>	107.02	Morsettiera	Terminal board	Porcelaine	Tablero de bornes
<b>5</b>	107.22 107.25 107.26	Tubo vapore	Steam pipe	Tuyau vapeur	Tubo vapor
<b>6</b>	107.20	Raccordo tubo vapore	Steam pipe fitting	Raccord tuyau vapeur	Empalme tubo vapor
<b>7</b>	121.01	Fascetta tubo vapore	Steam pipe clamp	Collier tuyau vapeur	Abrazadera tubo vapor
<b>8</b>	107.21	Fascetta doppia	Double clamp	Collier double	Abrazadera doble
<b>9</b>	147.06	Termostato	Thermostat	Thermostat	Termostato
<b>10</b>	104.04	Microinterruttore	Microswitch	Cliquet	Microinterruptor
<b>11</b>	-	Calottina	Cover	Capot	Capot
<b>12</b>	-	Mostrina rappresentazione temperatura ferro	Iron temperature indicator plate	Plaque avec représentation température fer	Placa indicación temperatura plancha
<b>13</b>	-	Indicatore temperatura termostato	Thermostat temperature indicator	Bouton thermostat	Indicador temperatura termostato
<b>14</b>	-	Protezione morsettiera	Terminal board protection	Plaque derrière protection	Protección tablero de bornes
<b>15</b>	-	Cordone elettrico ferro	Iron twisted pair	Cordon électrique fer	Cordón eléctrico plancha
<b>16</b>	107.27 107.28 107.32	Cordone elettrico calzato	Sheated twisted pair	Cordon électrique recouvert	Cordón eléctrico recubierto
<b>17</b>	107.42	Impugnatura in sughero	Cork handle	Poignée en liège	Asa de corcho
<b>18</b>	107.29	Termofusibile TY80/A	Thermofuse TY 80/A	Fusible thermique TY80/A	Fusible térmico TY80/A



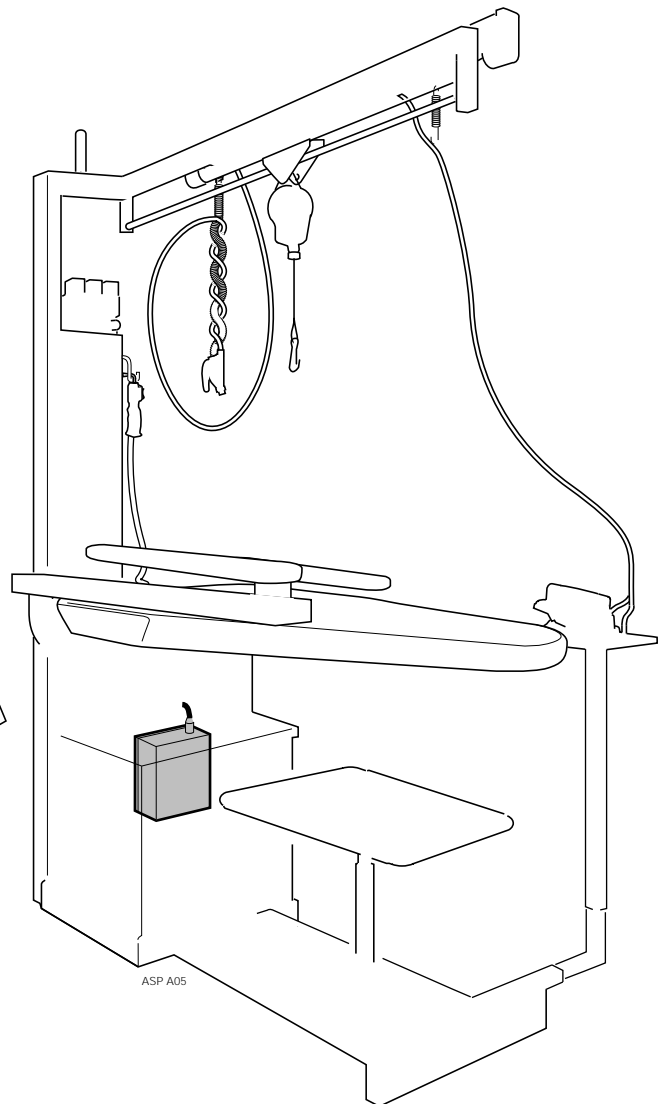
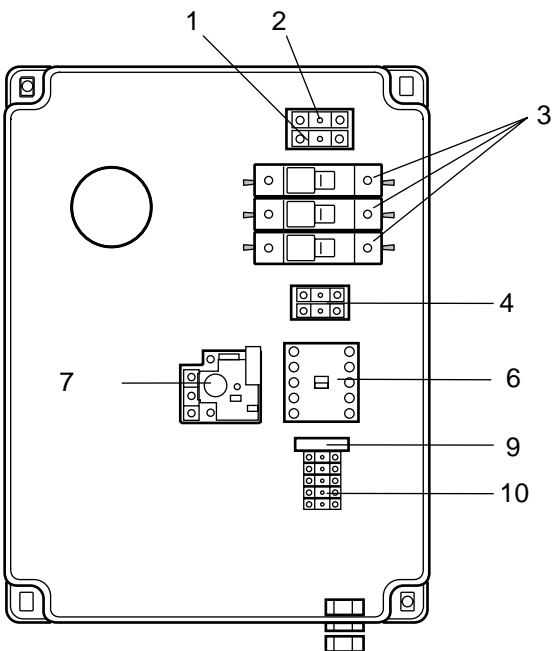


		<b>I</b>	<b>GB</b>	<b>F</b>	<b>E</b>
Nr	Cod.	Descrizione	Description	Description	Descripción
1	850CRPK70	Corpo pompa	Pump body	Corps de pompe	Cuerpo bomba
2	115043	Guarnizione OR	Gasket	Joint torique	Junta OR
3	560GRPK70	Girante	Impeller	Roue	Impulsor
4	114800	Chiavetta inox	Key-shaft	Clavette inox	Chaveta inox
5	114600	Anello Seeger	Seeger	Clips	Anillo Seeger
6	114700P	Rondella	Washer	Rondelle	Arandela
7	115500	Tenuta meccanica Ø 12	Mechanical seat Ø 12	Joint mécanique Ø 12	Junta mecánica Ø 12
8	14CL07	Copriventola	Fan cover	Capot ventilateur	Cubre-ventilador
9	14VN07	Ventola	Fan	Ventilateur	Ventilador
10	SC0700	Scudo	Motor cover	Rosque côté ventilateur	Escudo
11	850LNPK70	Lanterna	Motor bracket	Flasque	Estrella
12	RPT0718C00	Albero con rotore	Shaft with rotor	Rotor avec arbre	Eje con rotor
13	115104	Paraspruzzi	Splash washer	Défecteur	Anti-salpicaduras
14	113002	Cuscinetto 6203-22	Bearing 6203-22	Roulement 6203-22	Cojinete 6203-22
15	14COP061PM	Coprimorsettiera	Terminal box cover	Couvercle	Cubre tablero de bornes
16	117050	Guarnizione	Gasket	Joint	Junta
17	117110	Pressacavo	Cable press	Presse étoupe	Prensador cables
18	114402C	Morsettiera	Terminal box	Planchette à bornes	Tablero de bornes
19	CA0718CP0A	Cassa con statore	Motor case with stator	Carcasse avec stator	Caja con estator
Versione monofase • Single-phase version • Version monophase • Versión monofase V220/50 Hz					
20	RFP071C00	Albero con rotore	Shaft with rotor	Rotor avec arbre	Eje con rotor
21	117071	Gommino pressacavo	Cable grommet	Presse-câble	Tope de goma prensador de cable
22	111016F	Condensatore	Capacitor	Condensateur	Condensador
23	114420	Morsettiera speciale	Special terminal box	Planchette à bornes spéciale	Tablero de bornes especial
24	CA071CP0A1	Cassa con statore	Motor case with stator	Carcasse avec stator	Caja con estator

ASP 5

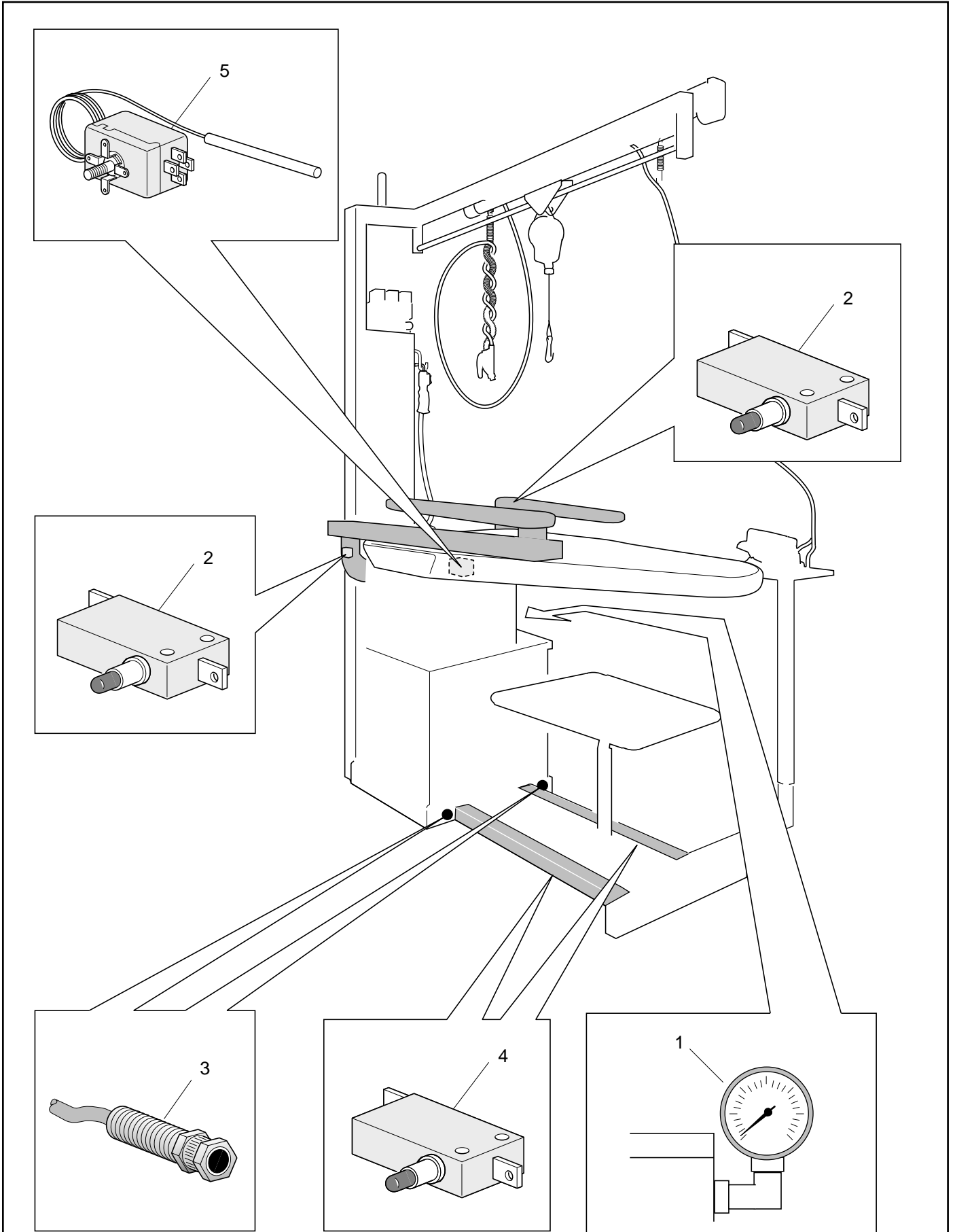


ASP 5-1





		<b>I</b>	<b>GB</b>	<b>F</b>	<b>E</b>
Nr	Cod.	Descrizione	Description	Description	Descripción
1	-	Morsetto neutro	Neutral terminal	Borne neutre	Borne neutro
2	-	Morsetto terra	Earth terminal	Borne à terre	Borne tierra
3	137.02	Portafusibile tripolare WEBER PCH 3x38 220V	Three-pole fuse carrier WEBER PCH 3x38 220V	Porte-fusible tripolaire WEBER PCH 3x38 220V	Porta fusibles de tres polos WEBER PCH 3x38 220V
4	-	Morsettiera di comando	Control terminal board	Tableau de bornes de commande	Tableros de bornes de mando
5	-	Teleruttore resistore caldaia	Boiler resistor remote control switch	Contacteur chaudière	Telerruptor resistor caldera
6	128.01	Teleruttore motore aspirazione/soffiatura	Suction/blowing motor remote control switch	Contacteur moteur aspiration/soufflage	Telerruptor motor aspiración/ soplado
7	-	Termica di protezione motore aspirazione/soffiatura MT03G-MT03S	Suction/blowing protection thermal switch MT03G-MT03S	Thermique de protection moteur aspiration/soufflage MT03G-MT03S	Térmica de protección motor Aspiración/soplado MT03G-MT03S
8	-	Teleruttore pompa caldaia	Boiler pump remote control switch	Contacteur pompe chaudière	Telerruptor bomba caldera
9	151.16	Fusibile di protezione comando Kabur UL04	Control protection fuse Kabur UL04	Fusible de protection commande Kabur UL04	Fusible de protección mando Kabur UL04
10	-	Morsettiera di comando	Control terminal board	Tableau de bornes de commande	Tablero de mando
11	-	Termica di protezione pompa caldaia MT03Y	Boiler pump protection thermal switch MT03Y	Thermique de protection pompe chaudière MT03Y	Térmica de protección bomba caldera MT03Y
12	-	Sonda livello elettronico	Electronic level probe	Sonde niveau électronique	Sonda nivel electrónico

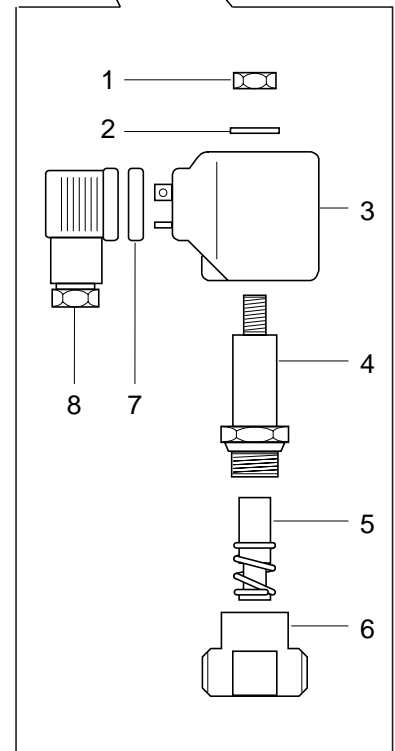
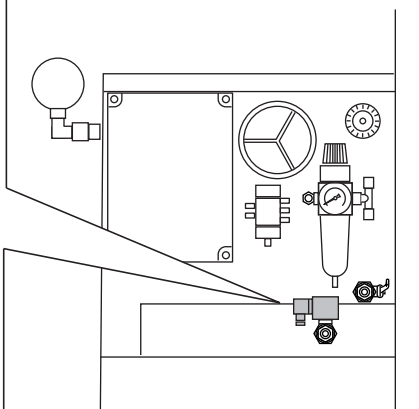
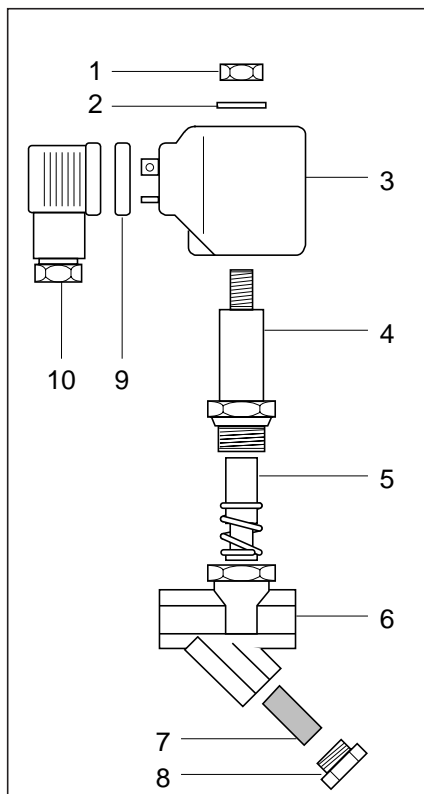
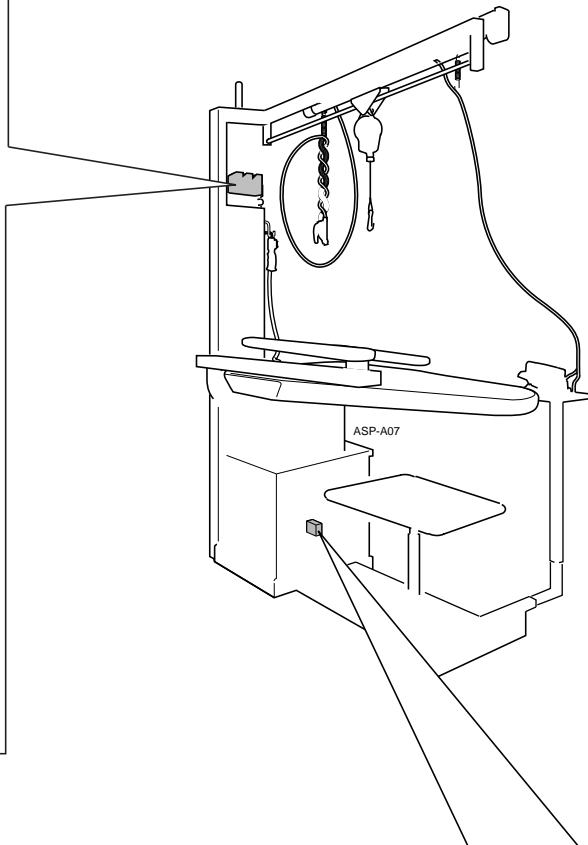
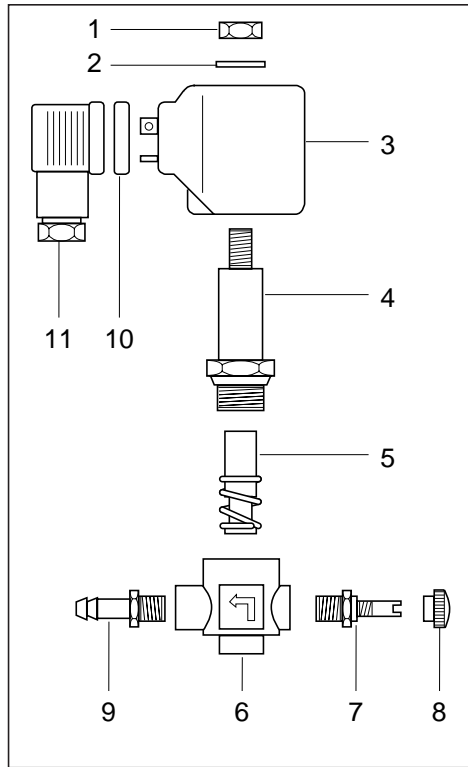


ASP-A06



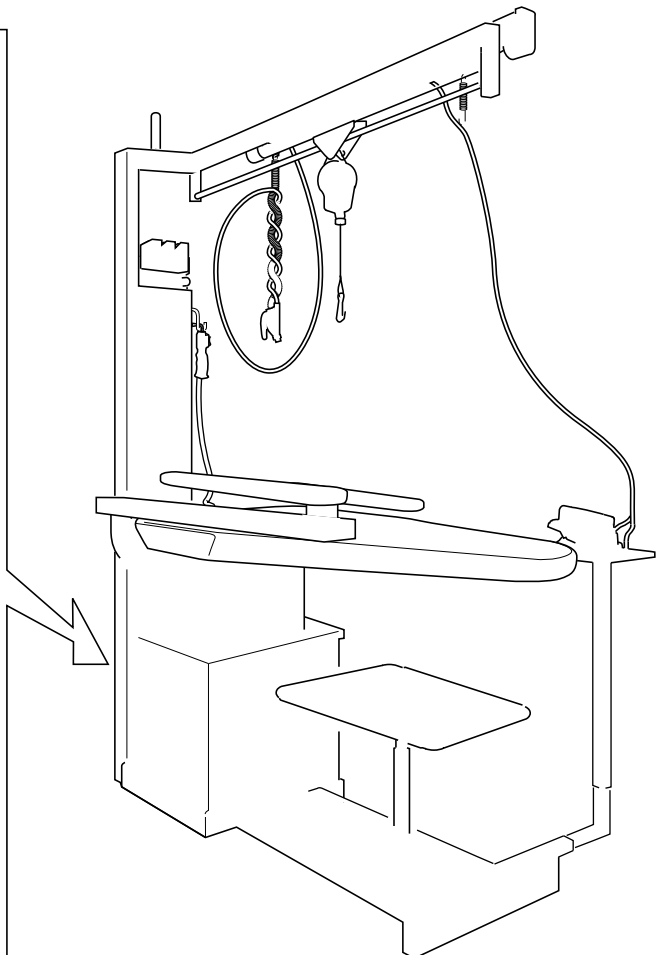
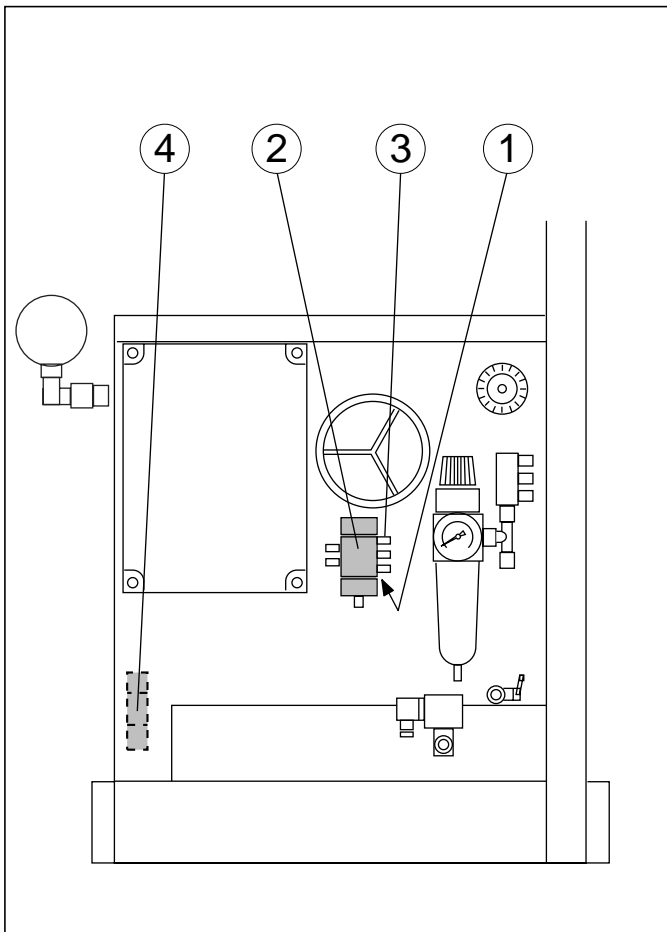
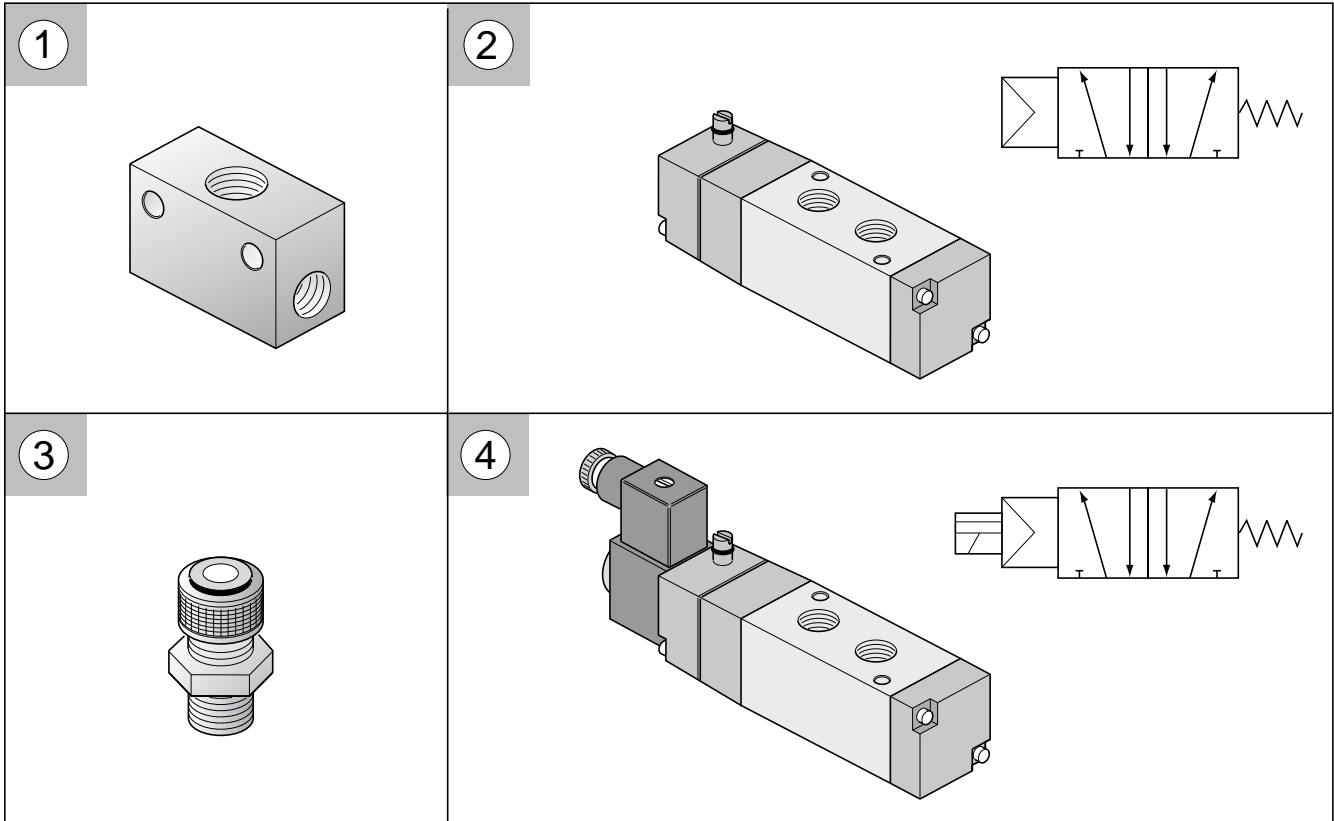
		<b>I</b>	<b>GB</b>	<b>F</b>	<b>E</b>
Nr	Cod.	Descrizione	Description	Description	Descripción
1	119.01 -	Manometro flangiato 1/4 pressione imp. id.	Flange pressure gauge 1/4 water system pressure	Manomètre à bride 1/4 pression installation vapeur	Manómetro con brida 1/4 Presión imp. hid.
2		Microinterruttore	Microswitch	Micro-interrupteur	Microinterruptor
3	179.01 -	Fotocellula aspirazione OMRON E3F2R2Z2	Suction photo cell OMRON E3F2R2Z2	Photocellule aspiration OMRON E3F2R2Z2	Célula fotoeléctrica de aspiración OMRON E3F2R2Z2
4	104.11	Microinterruttore	Microswitch	Micro-interrupteur	Microinterruptor
5	147.02	Termostato 120°	Thermostat 120°	Thermostat 120°	Termostato 120°

- I** Secondo l'allestimento della macchina vi può essere l'elettrovalvola 1 di tipo A, B o C
- GB** According to the setting of the machine, the solenoid valve 1 could be of type A, B or C
- F** En fonction de l'équipement de la machine, l'électrovanne 1 peut être de type A, B ou C
- E** En función del equipo de la máquina, la electroválvula 1 puede ser de tipo A, B o C





		<b>I</b>	<b>GB</b>	<b>F</b>	<b>E</b>
Nr	Cod.	Descrizione	Description	Description	Descripción
<b>A</b>	110.10	Elettrovalvola vapore 1/4"	Steam solenoid valve 1/4"	Electrovanne vapeur 1/4"	Electrov*lvula vapor 1/4"
1	-	Dado	Lock nut	Ecrou	Tuerca
2	-	Rondella	Washer	Rondelle	Arandela
3	110.03	Bobina 220V	Magnetic unit 220V	Bobine 220V	Bobina 220 V
	110.01	Bobina 24V	Magnetic unit 24V	Bobine 24V	Bobina 24 V
4	110.30	Cannotto	Tube guide	Cheminée	Manguito
5	110.34	Nucleo EPDM	Core EPDM	Noyau EPDM	Núcleo EPDM
	110.35	Nucleo TEFLON	Core TEFLON	Noyau TEFLON	Núcleo TEFLON
6	-	Corpo	Body	Corps	Cuerpo
7	-	Guarnizione	Gasket	Joint	Junta
8	110.08	Connettore	Connector	Connecteur	Conector
<b>B</b>	110.05	Elettrovalvola vap. + reg. 1/4"	Solenoid valve steam + reg. 1/4"	Electrovanne vapeur + rég. 1/4"	Electroválvula Vap. + reg. 1/4"
1	-	Dado	Lock nut	Ecrou	Tuerca
2	-	Rondella	Washer	Rondelle	Arandela
3	110.03	Bobina 220V	Magnetic unit 220V	Bobine 220V	Bobina 220 V
	110.01	Bobina 24V	Magnetic unit 24V	Bobine 24V	Bobina 24V
4	110.30	Cannotto	Tube guide	Chemineé	Manguito
5	110.34	Nucleo EPDM	Core EPDM	Noyau EPDM	Núcleo EPDM
	110.35	Nucleo TEFLON	Core TEFLON	Noyau TEFLON	Núcleo TEFLON
6	-	Corpo	Body	Corps	Cuerpo
7	110.28	Regolatore	Regulator	Régulateur	Regulador
8	110.15	Manopola	Handle	Bouton	Manopla
9	-	Portatubo	Pipe holder	Porte-tuyau	Porta tubo
10	-	Guarnizione	Gasket	Joint	Junta
11	110.08	Connettore	Connector	Connecteur	Conector
<b>C</b>	110.06	Elettrovalvola acqua + filtro 3/8"	Solenoid valve water + filter 3/8"	Electrovanne eau + filtre 3/8"	Electroválvula agua + filtro 3/8"
1	-	Dado	Lock nut	Ecrou	Tuerca
2	-	Rondella	Washer	Rondelle	Arandela
3	110.03	Bobina 220V	Magnetic unit 220V	Bobine 220V	Bobina 220 V
	110.01	Bobina 24V	Magnetic unit 24V	Bobine 24V	Bobina 24V
4	110.30	Cannotto	Tube guide	Cheminée	Manguito
5	110.34	Nucleo EPDM	Core EPDM	Noyau EPDM	Núcleo EPDM
	110.35	Nucleo TEFLON	Core TEFLON	Noyau TEFLON	Núcleo TEFLON
6	-	Corpo	Body	Corps	Cuerpo
7	-	Filtro	Filter	Filtre	Filtro
8	-	Tappo 3/8"	Plug 3/8"	Bouchon 3/8"	Tapón 3/8"
9	-	Guarnizione	Gasket	Joint	Junta
10	110.08	Connettore	Connector	Connecteur	Conector



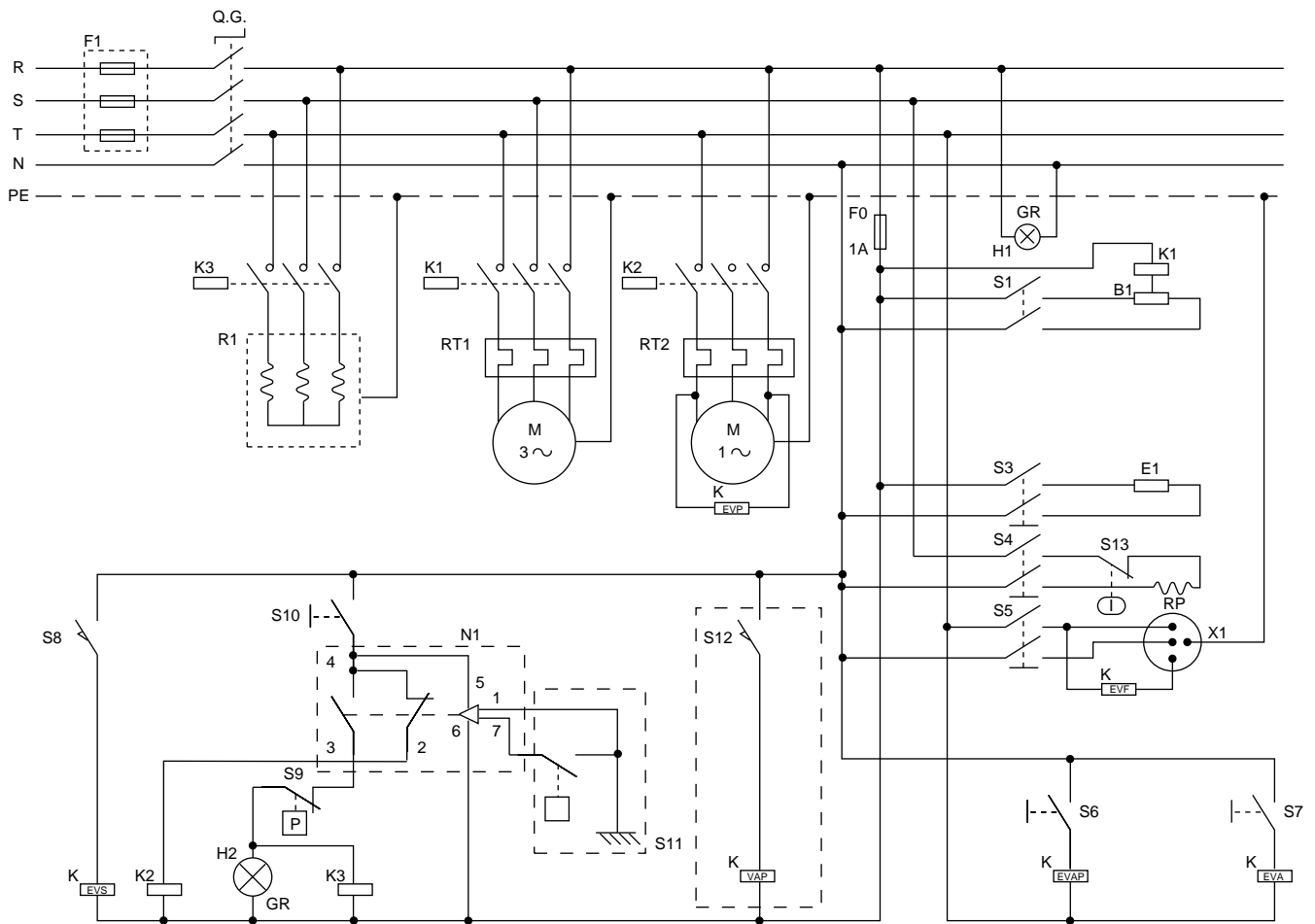
ASP-A08



		<b>I</b>	<b>GB</b>	<b>F</b>	<b>E</b>
Nr	Cod.	Descrizione	Description	Description	Descripción
1	173.21	Valvola Selettiva 1/8"	Shuttle valve 1/8"	Sélecteur de circuit 1/8"	Válvula selectora 1/8"
2	173.102	Valvola pneumatica riposizionamento a molla 5 vie 220-50 Hz	Valve pneumatic return by spring 5 lines 220-50 Hz	Vanne pneumatique retour à ressort 5 voies 220-50 Hz	Válvula neumática colocación con muelle 5 vías 220-50Hz
3	173.20	Dosatori di scarico e silenzianti 1/8"	Exhaust flow regulator and silencers 1/8"	Purge de réglage 1/8"	Dosificadores de descarga y silenciadores 1/8"
4	173.51	Elettrovalvola pneumatica riposizionamento a molla 5 vie 220-50 Hz	Solenoid valve pneumatic return by spring 5 lines 220-50 Hz	Electrovanne pneumatique retour à ressort 5 voies 220-50 Hz	Electroválvula neumática colocación con muelle 5 vías 220-50Hz

ASP 5

CIRCUITO ELETTRICO CON VAPORIZZATORE A UNA FOTOCELLULA  
 ELECTRIC CIRCUIT WITH ONE-PHOTO CELL SPRAYER  
 CIRCUIT ELECTRIQUE AVEC VAPORISATEUR MUNI D'UNE PHOTOCELLULE  
 CIRCUITO ELÉCTRICO CON VAPORIZADOR DE UNA CÉLULA FOTOELÉCTRICA





**I**

<b>R-S-T</b>	- Fasi
<b>N</b>	- Linea neutra
<b>PE</b>	- Protezione
<b>F0</b>	- Fusibile di protezione comando (1A)
<b>F1</b>	- Fusibile tripolare
<b>K1</b>	- Teleruttore motore aspirazione/soffiatura
<b>K2</b>	- Teleruttore motore pompa caldaia
<b>K3</b>	- Teleruttore resistenza caldaia
<b>H1</b>	- Spia tensione (GR=green) spia verde
<b>H2</b>	- Spia caldaia (GR)
<b>RT1</b>	- Relé termico motore aspirazione/soffiatura
<b>RT2</b>	- Relé termico motore pompa caldaia
<b>R1</b>	- Resistenza caldaia
<b>M3</b>	- Motore trifase aspirazione/soffiatura
<b>M1</b>	- Motore monofase pompa
<b>KEVS</b>	- Elettrovalvola scambiatrice motore asp./soff.
<b>KVAP</b>	- Elettrovalvola vaporizzazione piano (OPTIONALS)
<b>KEVAP</b>	- Elettrovalvola pistola vapore
<b>KEVA</b>	- Elettrovalvola pistola aria
<b>KEVP</b>	- Elettrovalvola ammissione acqua caldaia
<b>KEVF</b>	- Elettrovalvola vapore ferro
<b>S1</b>	- Interruttore fotocellula soffiatura motore
<b>S3</b>	- Interruttore illuminazione piano
<b>S4</b>	- Interruttore riscaldamento piano
<b>S5</b>	- Interruttore ferro
<b>S6</b>	- Pulsante pistola vapore
<b>S7</b>	- Pulsante pistola aria
<b>S8</b>	- Pedale soffiatura
<b>S9</b>	- Pressostato caldaia
<b>S10</b>	- Interruttore caldaia
<b>S11</b>	- Sonda elettronica livello caldaia
<b>S12</b>	- Pedana vaporizzazione (OPTIONALS)
<b>S13</b>	- Termostato resistenza piano
<b>N1</b>	- Livello elettronico
<b>B1</b>	- Fotocellula
<b>E1</b>	- Neon illuminazione piano
<b>RP</b>	- Resistenza piano
<b>X1</b>	- Connettore ferro

**GB**

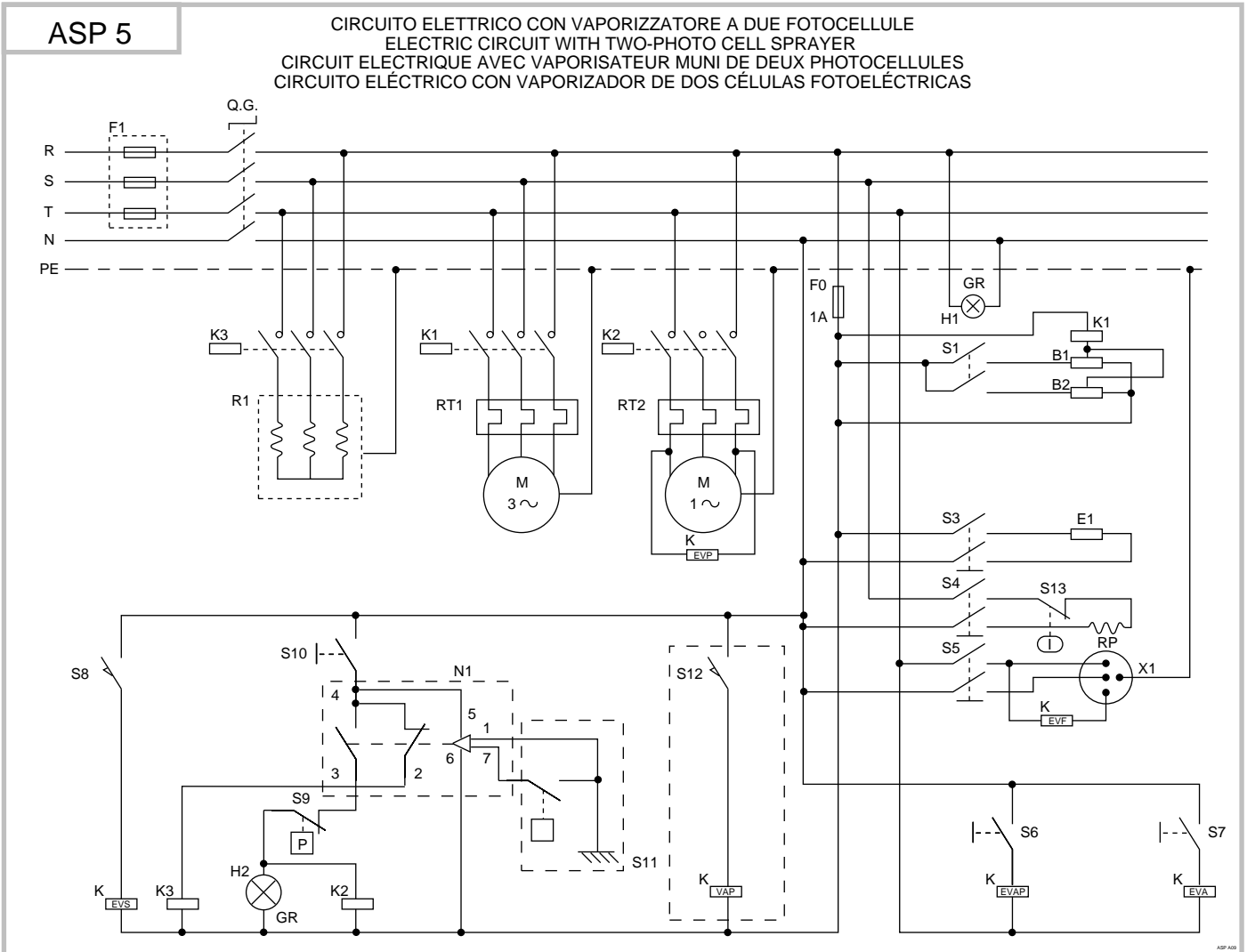
<b>R-S-T</b>	- Phases
<b>N</b>	- Neutral line
<b>PE</b>	- Protection
<b>F0</b>	- Control protection fuse (1A)
<b>F1</b>	- Three-pole fuse
<b>K1</b>	- Suction/blowing motor remote control switch
<b>K2</b>	- Boiler pump motor remote control switch
<b>K3</b>	- Boiler resistance remote control switch
<b>H1</b>	- Tension pilot light (GR = green) green pilot light
<b>H2</b>	- Boiler pilot light (GR)
<b>RT1</b>	- Suction/blowing motor thermal cutout
<b>RT2</b>	- Boiler pump motor thermal cutout
<b>R1</b>	- Boiler resistance
<b>M3</b>	- Suction/blowing three-phase motor
<b>M1</b>	- Pump single-phase motor
<b>KEVS</b>	- Suction/blowing motor exchanging solenoid valve
<b>KVAP</b>	- Board vaporization solenoid valve (OPTIONAL)
<b>KEVAP</b>	- Steam gun solenoid valve
<b>KEVA</b>	- Air gun solenoid valve
<b>KEVP</b>	- Boiler water inlet solenoid valve
<b>KEVF</b>	- Iron steam solenoid valve
<b>S1</b>	- Motor blowing photo cell switch
<b>S3</b>	- Board lighting switch
<b>S4</b>	- Board heating switch
<b>S5</b>	- Iron switch
<b>S6</b>	- Steam gun push button
<b>S7</b>	- Air gun push button
<b>S8</b>	- Blowing pedal
<b>S9</b>	- Boiler pressure switch
<b>S10</b>	- Boiler switch
<b>S11</b>	- Boiler level electronic probe
<b>S12</b>	- Vaporization footboard (OPTIONAL)
<b>S13</b>	- Board resistance thermostat
<b>N1</b>	- Electronic level
<b>B1</b>	- Photo cell
<b>E1</b>	- Board lighting neon
<b>RP</b>	- Board resistance
<b>X1</b>	- Iron connector

**F**

<b>R-S-T</b>	- Phases
<b>N</b>	- Ligne neutre
<b>PE</b>	- Protection
<b>F0</b>	- Fusible de protection commande (1A)
<b>F1</b>	- Fusible à trois pôles
<b>K1</b>	- Contacteur moteur aspiration/soufflage
<b>K2</b>	- Contacteur moteur pompe chaudière
<b>K3</b>	- Contacteur résistance chaudière
<b>H1</b>	- Voyant tension (GR=green) lumineux vert
<b>H2</b>	- Voyant lumineux chaudière (GR)H2
<b>RT1</b>	- Relais thermique moteur aspiration/soufflage
<b>RT2</b>	- Relais thermique moteur pompe chaudière
<b>R1</b>	- Résistance chaudière
<b>M3</b>	- Moteur triphasé aspiration/soufflage
<b>M1</b>	- Moteur mono-phase pompe
<b>KEVS</b>	- Electrovanne échange moteur aspiration/soufflage
<b>KVAP</b>	- Electrovanne vaporisation plan (OPTION)
<b>KEVAP</b>	- Electrovanne pistolet vapeur
<b>KEVA</b>	- Electrovanne pistolet air
<b>KEVP</b>	- Electrovanne admission eau chaude
<b>KEVF</b>	- Electrovanne vapeur fer
<b>S1</b>	- Interrupteur photocellule soufflage moteur
<b>S3</b>	- Interrupteur illumination plan
<b>S4</b>	- Interrupteur chauffage plan
<b>S5</b>	- Interrupteur fer
<b>S6</b>	- Bouton-poussoir pistolet vapeur
<b>S7</b>	- Bouton-poussoir pistolet air
<b>S8</b>	- Pédale soufflage
<b>S9</b>	- Pressostat chaudière
<b>S10</b>	- Interrupteur chaudière
<b>S11</b>	- Sonde électronique niveau chaudière
<b>S12</b>	- Pédale vaporisateur (OPTION)
<b>S13</b>	- Thermostat résistance plan
<b>N1</b>	- Niveau électronique
<b>B1</b>	- Photocellule
<b>E1</b>	- Néon illumination plan
<b>RP</b>	- Résistance plan
<b>X1</b>	- Connecteur fer

**E**

<b>R-S-T</b>	- Fases
<b>N</b>	- Línea neutra
<b>PE</b>	- Protección
<b>F0</b>	- Fusible de protección mando (1A)
<b>F1</b>	- Fusible de tres polos
<b>K1</b>	- Telerruptor motor aspiración/soplado
<b>K2</b>	- Telerruptor motor bomba caldera
<b>K3</b>	- Telerruptor resistencia caldera
<b>H1</b>	- Indicador luminoso tensión (GR=green) color verde
<b>H2</b>	- Indicador luminoso caldera (GR)
<b>RT1</b>	- Relé térmico motor aspiración/soplado
<b>RT2</b>	- Relé térmico motor bomba caldera
<b>R1</b>	- Resistencia caldera
<b>M3</b>	- Motor trifásico aspiración/soplado
<b>M1</b>	- Motor monofase bomba
<b>KEVS</b>	- Electroválvula intercambiadora motor asp./sopl.
<b>KVAP</b>	- Electroválvula vaporización superficie (OPTIONALS)
<b>KEVAP</b>	- Electroválvula pistola vapor
<b>KEVA</b>	- Electroválvula pistola aire
<b>KEVP</b>	- Electroválvula admisión agua caldera
<b>KEVF</b>	- Electroválvula vapor plancha
<b>S1</b>	- Interruptor célula fotoeléctrica soplado motor
<b>S3</b>	- Interruptor iluminación superficie
<b>S4</b>	- Interruptor calentamiento superficie
<b>S5</b>	- Interruptor plancha
<b>S6</b>	- Pulsador pistola vapor
<b>S7</b>	- Pulsador pistola aire
<b>S8</b>	- Pedal soplado
<b>S9</b>	- Presostato caldera
<b>S10</b>	- Interruptor caldera
<b>S11</b>	- Sonda electrónica nivel caldera
<b>S12</b>	- Tarima vaporización (OPTIONALS)
<b>S13</b>	- Termostato resistencia superficie
<b>N1</b>	- Nivel electrónico
<b>B1</b>	- Célula fotoeléctrica
<b>E1</b>	- Fluorescente iluminación superficie
<b>RP</b>	- Resistencia superficie
<b>X1</b>	- Conector plancha



**I**

<b>R-S-T</b>	- Fasi
<b>N</b>	- Linea neutra
<b>PE</b>	- Protezione
<b>F0</b>	- Fusibile di protezione comando (1A)
<b>F1</b>	- Fusibile tripolare
<b>K1</b>	- Teleruttore motore aspirazione/soffiatura
<b>K2</b>	- Teleruttore motore pompa caldaia
<b>K3</b>	- Teleruttore resistenza caldaia
<b>H1</b>	- Spia tensione (GR=green) spia verde
<b>H2</b>	- Spia caldaia
<b>RT1</b>	- Relé termico motore aspirazione/soffiatura
<b>RT2</b>	- Relé termico motore pompa caldaia
<b>R1</b>	- Resistenza caldaia
<b>M3</b>	- Motore trifase aspirazione/soffiatura
<b>M1</b>	- Motore monofase pompa
<b>KEVS</b>	- Elettrovalvola scambiatrice motore asp./soff.
<b>KVAP</b>	- Elettrovalvola vaporizzazione piano (OPTIONALS)
<b>KEVAP</b>	- Elettrovalvola pistola vapore
<b>KEVA</b>	- Elettrovalvola pistola aria
<b>KEVP</b>	- Elettrovalvola ammissione acqua caldaia
<b>KEVF</b>	- Elettrovalvola vapore ferro
<b>S1</b>	- Interruttore fotocellula soffiatura motore
<b>S3</b>	- Interruttore illuminazione piano
<b>S4</b>	- Interruttore riscaldamento piano
<b>S5</b>	- Interruttore ferro
<b>S6</b>	- Pulsante pistola vapore
<b>S7</b>	- Pulsante pistola aria
<b>S8</b>	- Pedale soffiatura
<b>S9</b>	- Pressostato caldaia
<b>S10</b>	- Interruttore caldaia
<b>S11</b>	- Sonda elettronica livello caldaia
<b>S12</b>	- Pedana vaporizzazione (OPTIONALS)
<b>S13</b>	- Termostato resistenza piano
<b>N1</b>	- Livello elettronico
<b>B1</b>	- Fotocellula dx
<b>B2</b>	- Fotocellula sx
<b>E1</b>	- Neon illuminazione piano
<b>RP</b>	- Resistenza piano
<b>X1</b>	- Connettore ferro

**GB**

<b>R-S-T</b>	- Phases
<b>N</b>	- Neutral line
<b>PE</b>	- Protection
<b>F0</b>	- Control protection fuse (1A)
<b>F1</b>	- Three-pole fuse
<b>K1</b>	- Suction/blowing motor remote control switch
<b>K2</b>	- Boiler pump motor remote control switch
<b>K3</b>	- Boiler resistance remote control switch
<b>H1</b>	- Tension pilot light (GR = green) green pilot light
<b>H2</b>	- Boiler pilot light
<b>RT1</b>	- Suction/blowing motor thermal cutout
<b>RT2</b>	- Boiler pump motor thermal cutout
<b>R1</b>	- Boiler resistance
<b>M3</b>	- Suction/blowing three-phase motor
<b>M1</b>	- Pump single-phase motor
<b>KEVS</b>	- Suction/blowing motor exchanging solenoid valve
<b>KVAP</b>	- Board vaporization solenoid valve (OPTIONAL)
<b>KEVAP</b>	- Steam gun solenoid valve
<b>KEVA</b>	- Air gun solenoid valve
<b>KEVP</b>	- Boiler water inlet solenoid valve
<b>KEVF</b>	- Iron steam solenoid valve
<b>S1</b>	- Motor blowing photo cell switch
<b>S3</b>	- Board lighting switch
<b>S4</b>	- Board heating switch
<b>S5</b>	- Iron switch
<b>S6</b>	- Steam gun push button
<b>S7</b>	- Air gun push button
<b>S8</b>	- Blowing pedal
<b>S9</b>	- Boiler pressure switch
<b>S10</b>	- Boiler switch
<b>S11</b>	- Boiler level electronic probe
<b>S12</b>	- Vaporization footboard (OPTIONAL)
<b>S13</b>	- Board resistance thermostat
<b>N1</b>	- Electronic level
<b>B1</b>	- Photo cell RT
<b>B2</b>	- Photo cell LF
<b>E1</b>	- Board lighting neon
<b>RP</b>	- Board resistance
<b>X1</b>	- Iron connector

**F**

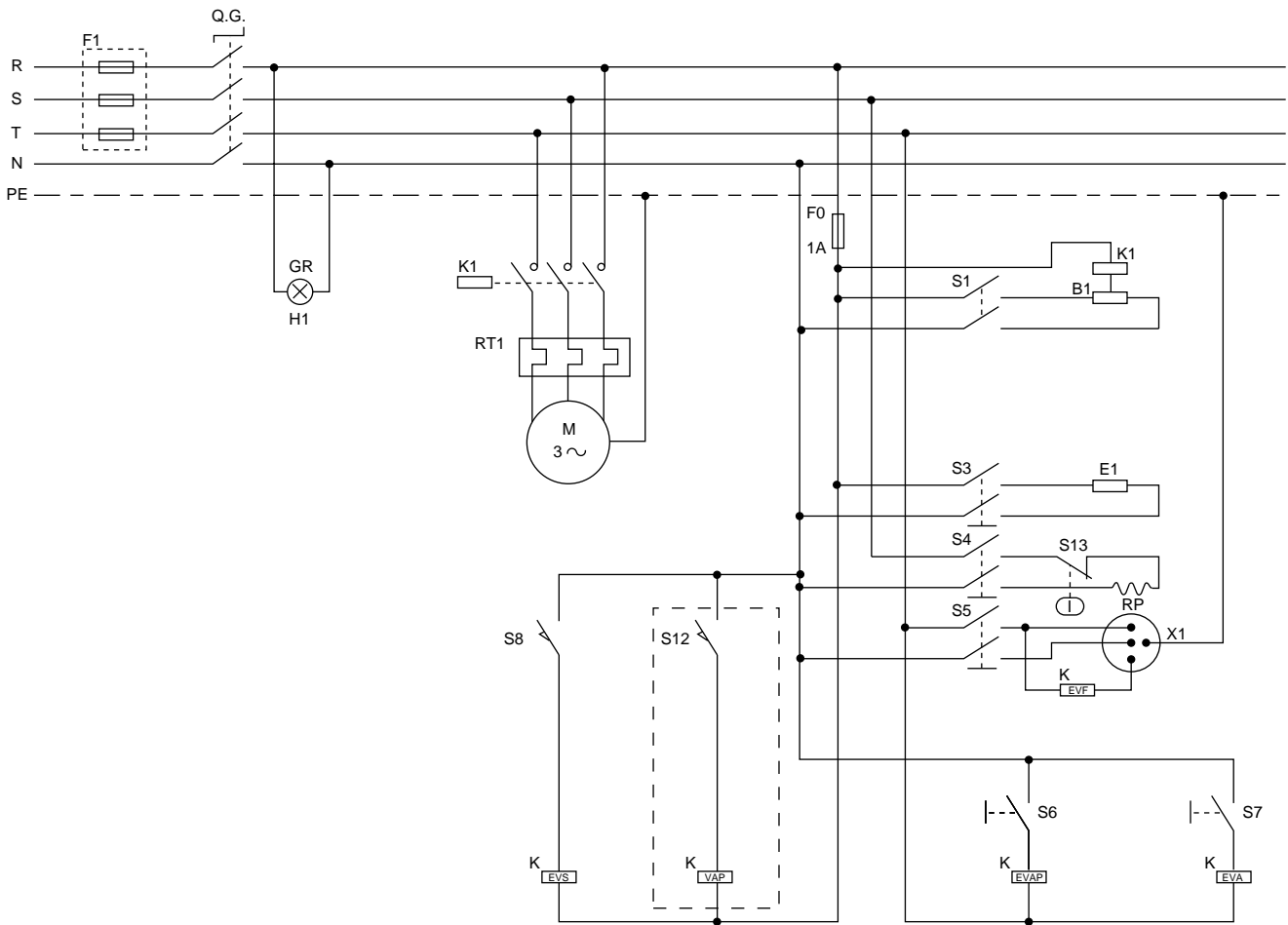
<b>R-S-T</b>	- Phases
<b>N</b>	- Ligne neutre
<b>PE</b>	- Protection
<b>F0</b>	- Fusible de protection commande (1A)
<b>F1</b>	- Fusible à trois pôles
<b>K1</b>	- Contacteur moteur aspiration/soufflage
<b>K2</b>	- Contacteur moteur pompe chaudière
<b>K3</b>	- Contacteur résistance chaudière
<b>H1</b>	- Voyant tension (GR=green) lumineux vert
<b>H2</b>	- Voyant lumineux chaudière
<b>RT1</b>	- Relais thermique moteur aspiration/soufflage
<b>RT2</b>	- Relais thermique moteur pompe chaudière
<b>R1</b>	- Résistance chaudière
<b>M3</b>	- Moteur triphasé aspiration/soufflage
<b>M1</b>	- Moteur mono-phase pompe
<b>KEVS</b>	- Electrovanne échange moteur aspiration/soufflage
<b>KVAP</b>	- Electrovanne vaporisation plan (OPTION)
<b>KEVAP</b>	- Electrovanne pistolet vapeur
<b>KEVA</b>	- Electrovanne pistolet air
<b>KEVP</b>	- Electrovanne admission eau chaude
<b>KEVF</b>	- Electrovanne vapeur fer
<b>S1</b>	- Interrupteur photocellule soufflage moteur
<b>S3</b>	- Interrupteur illumination plan
<b>S4</b>	- Interrupteur chauffage plan
<b>S5</b>	- Interrupteur fer
<b>S6</b>	- Bouton-poussoir pistolet vapeur
<b>S7</b>	- Bouton-poussoir pistolet air
<b>S8</b>	- Pédale soufflage
<b>S9</b>	- Pressostat chaudière
<b>S10</b>	- Interrupteur chaudière
<b>S11</b>	- Sonde électronique niveau chaudière
<b>S12</b>	- Pédale vaporisateur (OPTION)
<b>S13</b>	- Thermostat résistance plan
<b>N1</b>	- Niveau électronique
<b>B1</b>	- Photocellule DROITE
<b>B2</b>	- Photocellule GAUCHE
<b>E1</b>	- Néon illumination plan
<b>RP</b>	- Résistance plan
<b>X1</b>	- Connecteur fer

**E**

<b>R-S-T</b>	- Fases
<b>N</b>	- Línea neutra
<b>PE</b>	- Protección
<b>F0</b>	- Fusible de protección mando (1A)
<b>F1</b>	- Fusible de tres polos
<b>K1</b>	- Telerruptor motor aspiración/soplado
<b>K2</b>	- Telerruptor motor bomba caldera
<b>K3</b>	- Telerruptor resistencia caldera
<b>H1</b>	- Indicador luminoso tensión (GR=green) color verde
<b>H2</b>	- Indicador luminoso caldera
<b>RT1</b>	- Relé térmico motor aspiración/soplado
<b>RT2</b>	- Relé térmico motor bomba caldera
<b>R1</b>	- Resistencia caldera
<b>M3</b>	- Motor trifásico aspiración/soplado
<b>M1</b>	- Motor monofase bomba
<b>KEVS</b>	- Electroválvula intercambiadora motor asp./sopl.
<b>KVAP</b>	- Electroválvula vaporización superficie (OPTIONALS)
<b>KEVAP</b>	- Electroválvula pistola vapor
<b>KEVA</b>	- Electroválvula pistola aire
<b>KEVP</b>	- Electroválvula admisión agua caldera
<b>KEVF</b>	- Electroválvula vapor plancha
<b>S1</b>	- Interruptor célula fotoeléctrica soplado motor
<b>S3</b>	- Interruptor iluminación superficie
<b>S4</b>	- Interruptor calentamiento superficie
<b>S5</b>	- Interruptor plancha
<b>S6</b>	- Pulsador pistola vapor
<b>S7</b>	- Pulsador pistola aire
<b>S8</b>	- Pedal soplado
<b>S9</b>	- Presostato caldera
<b>S10</b>	- Interruptor caldera
<b>S11</b>	- Sonda electrónica nivel caldera
<b>S12</b>	- Tarima vaporización (OPTIONALS)
<b>S13</b>	- Termostato resistencia superficie
<b>N1</b>	- Nivel electrónico
<b>B1</b>	- Célula fotoeléctrica der.
<b>B2</b>	- Célula fotoeléctrica izq.
<b>E1</b>	- Fluorescente iluminación superficie
<b>RP</b>	- Resistencia superficie
<b>X1</b>	- Conector plancha

ASP 5-1

CIRCUITO ELETTRICO CON VAPORIZZATORE A UNA FOTOCELLULA  
 ELECTRIC CIRCUIT WITH ONE-PHOTO CELL SPRAYER  
 CIRCUIT ELECTRIQUE AVEC VAPORISATEUR MUNI D'UNE PHOTOCELLULE  
 CIRCUITO ELÉCTRICO CON VAPORIZADOR DE UNA CÉLULA FOTOELÉCTRICA



ASP A11

**I**

<b>R-S-T</b>	- Fasi
<b>N</b>	- Linea neutra
<b>PE</b>	- Protezione
<b>F0</b>	- Fusibile di protezione comando (1A)
<b>F1</b>	- Fusibile tripolare
<b>K1</b>	- Teleruttore motore aspirazione/soffiatura
<b>H1</b>	- Spia tensione (GR=green) spia verde
<b>RT1</b>	- Relé termico motore aspirazione/soffiatura
<b>M3</b>	- Motore trifase aspirazione/soffiatura
<b>KEVS</b>	- Elettrovalvola scambiatrice motore asp./soff.
<b>KVAP</b>	- Elettrovalvola vaporizzazione piano (OPTIONALS)
<b>KEVAP</b>	- Elettrovalvola pistola vapore
<b>KEVA</b>	- Elettrovalvola pistola aria
<b>KEVF</b>	- Elettrovalvola vapore ferro
<b>S1</b>	- Interruttore fotocellula soffiatura motore
<b>S3</b>	- Interruttore illuminazione piano
<b>S4</b>	- Interruttore riscaldamento piano
<b>S5</b>	- Interruttore ferro
<b>S6</b>	- Pulsante pistola vapore
<b>S7</b>	- Pulsante pistola aria
<b>S8</b>	- Pedale soffiatura
<b>S10</b>	- Interruttore caldaia
<b>S12</b>	- Pedana vaporizzazione (OPTIONALS)
<b>S13</b>	- Termostato resistenza piano
<b>B1</b>	- Fotocellula
<b>E1</b>	- Neon illuminazione piano
<b>RP</b>	- Resistenza piano
<b>X1</b>	- Connettore ferro

**GB**

<b>R-S-T</b>	- Phases
<b>N</b>	- Neutral line
<b>PE</b>	- Protection
<b>F0</b>	- Control protection fuse (1A)
<b>F1</b>	- Three-pole fuse
<b>K1</b>	- Suction/blowing motor remote control switch
<b>H1</b>	- Tension pilot light (GR = green) green pilot light
<b>RT1</b>	- Suction/blowing motor thermal cutout
<b>M3</b>	- Suction/blowing three-phase motor
<b>KEVS</b>	- Suction/blowing motor exchanging solenoid valve
<b>KVAP</b>	- Board vaporization solenoid valve (OPTIONAL)
<b>KEVAP</b>	- Steam gun solenoid valve
<b>KEVA</b>	- Air gun solenoid valve
<b>KEVF</b>	- Iron steam solenoid valve
<b>S1</b>	- Motor blowing photo cell switch
<b>S3</b>	- Board lighting switch
<b>S4</b>	- Board heating switch
<b>S5</b>	- Iron switch
<b>S6</b>	- Steam gun push button
<b>S7</b>	- Air gun push button
<b>S8</b>	- Blowing pedal
<b>S10</b>	- Boiler switch
<b>S12</b>	- Vaporization footboard (OPTIONAL)
<b>S13</b>	- Board resistance thermostat
<b>B1</b>	- Photo cell
<b>E1</b>	- Board lighting neon
<b>RP</b>	- Board resistance
<b>X1</b>	- Iron connector

**F**

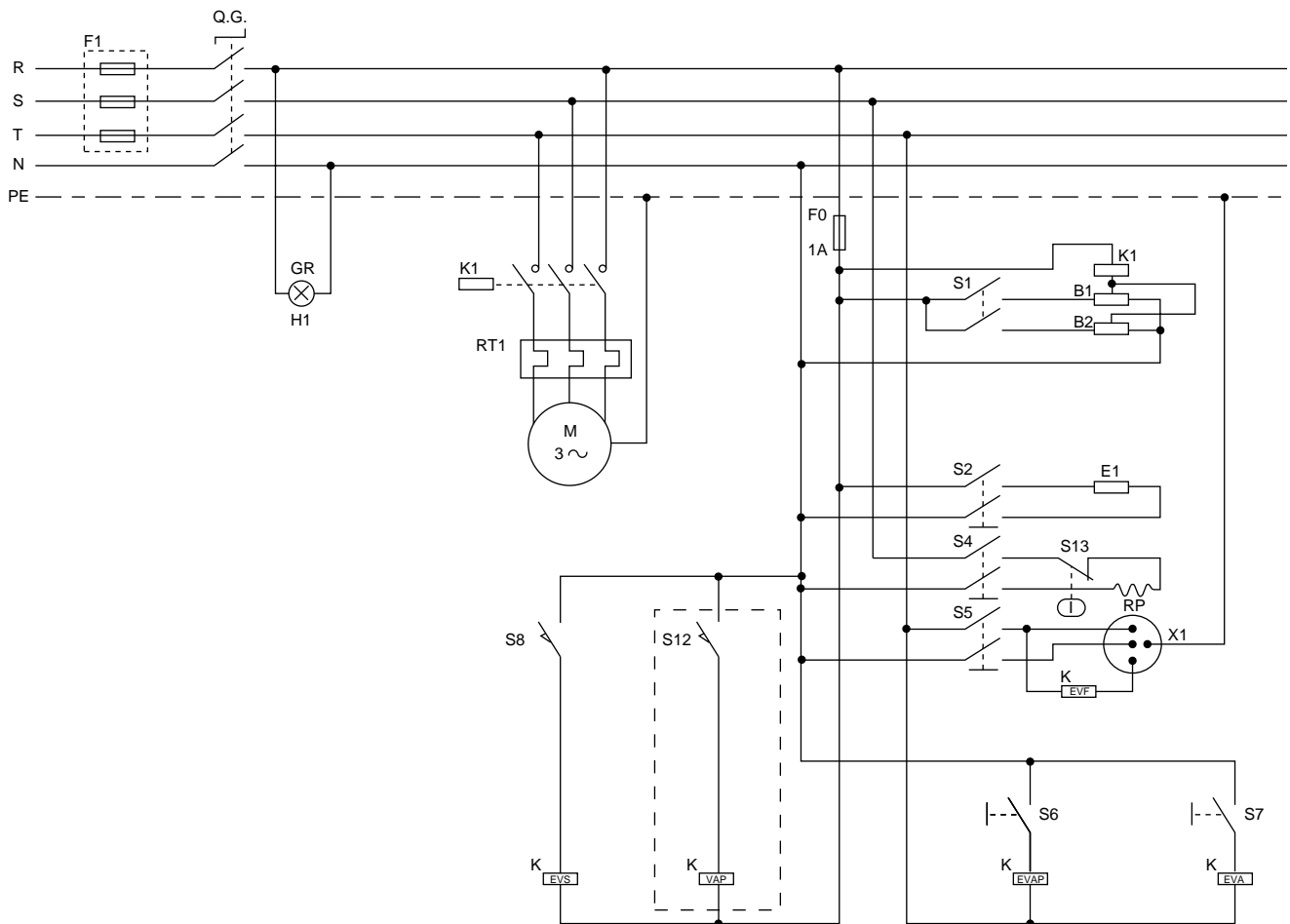
<b>R-S-T</b>	- Phases
<b>N</b>	- Ligne neutre
<b>PE</b>	- Protection
<b>F0</b>	- Fusible de protection commande (1A)
<b>F1</b>	- Fusible à trois pôles
<b>K1</b>	- Contacteur moteur aspiration/soufflage
<b>H1</b>	- Voyant tension (GR=green) lumineux vert
<b>RT1</b>	- Relais thermique moteur aspiration/soufflage
<b>M3</b>	- Moteur triphasé aspiration/soufflage
<b>KEVS</b>	- Electrovanne échangeuse moteur aspiration/soufflage
<b>KVAP</b>	- Electrovanne vaporisation plan (OPTION)
<b>KEVAP</b>	- Electrovanne pistolet vapeur
<b>KEVA</b>	- Electrovanne pistolet air
<b>KEVF</b>	- Electrovanne vapeur fer
<b>S1</b>	- Interrupteur photocellule soufflage moteur
<b>S3</b>	- Interrupteur illumination plan
<b>S4</b>	- Interrupteur chauffage plan
<b>S5</b>	- Interrupteur fer
<b>S6</b>	- Bouton-poussoir pistolet vapeur
<b>S7</b>	- Bouton-poussoir pistolet air
<b>S8</b>	- Pédale soufflage
<b>S10</b>	- Interrupteur chaudière
<b>S12</b>	- Pédale vaporisateur (OPTION)
<b>S13</b>	- Thermostat résistance plan
<b>B1</b>	- Photocellule
<b>E1</b>	- Néon illumination plan
<b>RP</b>	- Résistance plan
<b>X1</b>	- Connecteur fer

**E**

<b>R-S-T</b>	- Fases
<b>N</b>	- Línea neutra
<b>PE</b>	- Protección
<b>F0</b>	- Fusible de protección mando (1A)
<b>F1</b>	- Fusible de tres polos
<b>K1</b>	- Telerruptor motor aspiración/soplado
<b>H1</b>	- Indicador luminoso tensión (GR=green) color verde
<b>RT1</b>	- Relé térmico motor aspiración/soplado
<b>M3</b>	- Motor trifásico aspiración/soplado
<b>KEVS</b>	- Electroválvula intercambiadora motor asp./sopl.
<b>KVAP</b>	- Electroválvula vaporización superficie (OPTIONALS)
<b>KEVAP</b>	- Electroválvula pistola vapor
<b>KEVA</b>	- Electroválvula pistola aire
<b>KEVF</b>	- Electroválvula vapor plancha
<b>S1</b>	- Interruptor célula fotoeléctrica soplado motor
<b>S3</b>	- Interruptor iluminación superficie
<b>S4</b>	- Interruptor calentamiento superficie
<b>S5</b>	- Interruptor plancha
<b>S6</b>	- Pulsador pistola vapor
<b>S7</b>	- Pulsador pistola aire
<b>S8</b>	- Pedal soplado
<b>S10</b>	- Interruptor caldera
<b>S12</b>	- Tarima vaporización (OPTIONALS)
<b>S13</b>	- Termostato resistencia superficie
<b>B1</b>	- Célula fotoeléctrica
<b>E1</b>	- Fluorescente iluminación superficie
<b>RP</b>	- Resistencia superficie
<b>X1</b>	- Conector plancha

ASP 5-1

CIRCUITO ELETTRICO CON VAPORIZZATORE A DUE FOTOCELLULE  
 ELECTRIC CIRCUIT WITH TWO-PHOTO CELL SPRAYER  
 CIRCUIT ELECTRIQUE AVEC VAPORISATEUR MUNI DE DEUX PHOTOCÉLULES  
 CIRCUITO ELÉCTRICO CON VAPORIZADOR DE DOS CÉLULAS FOTOELÉCTRICAS



ASP A12



**I**

<b>R-S-T</b>	- Fasi
<b>N</b>	- Linea neutra
<b>PE</b>	- Protezione
<b>F0</b>	- Fusibile di protezione comando (1A)
<b>F1</b>	- Fusibile tripolare
<b>K1</b>	- Teleruttore motore aspirazione/soffiatura
<b>H1</b>	- Spia tensione (GR=green) spia verde
<b>RT1</b>	- Relé termico motore aspirazione/soffiatura
<b>M3</b>	- Motore trifase aspirazione/soffiatura
<b>KEVS</b>	- Elettrovalvola scambiatrice motore asp./soff.
<b>KVAP</b>	- Elettrovalvola vaporizzazione piano (OPTIONALS)
<b>KEVAP</b>	- Elettrovalvola pistola vapore
<b>KEVA</b>	- Elettrovalvola pistola aria
<b>KEVF</b>	- Elettrovalvola vapore ferro
<b>S1</b>	- Interruttore fotocellula soffiatura motore
<b>S3</b>	- Interruttore illuminazione piano
<b>S4</b>	- Interruttore riscaldamento piano
<b>S5</b>	- Interruttore ferro
<b>S6</b>	- Pulsante pistola vapore
<b>S7</b>	- Pulsante pistola aria
<b>S8</b>	- Pedale soffiatura
<b>S10</b>	- Interruttore caldaia
<b>S12</b>	- Pedana vaporizzazione (OPTIONALS)
<b>S13</b>	- Termostato resistenza piano
<b>N1</b>	- Livello elettronico
<b>B1</b>	- Fotocellula dx
<b>B2</b>	- Fotocellula sx
<b>E1</b>	- Neon illuminazione piano
<b>RP</b>	- Resistenza piano
<b>X1</b>	- Connettore ferro

**GB**

<b>R-S-T</b>	- Phases
<b>N</b>	- Neutral line
<b>PE</b>	- Protection
<b>F0</b>	- Control protection fuse (1A)
<b>F1</b>	- Three-pole fuse
<b>K1</b>	- Suction/blowing motor remote control switch
<b>H1</b>	- Tension pilot light (GR = green) green pilot light
<b>RT1</b>	- Suction/blowing motor thermal cutout
<b>M3</b>	- Suction/blowing three-phase motor
<b>KEVS</b>	- Suction/blowing motor exchanging solenoid valve
<b>KVAP</b>	- Board vaporization solenoid valve (OPTIONAL)
<b>KEVAP</b>	- Steam gun solenoid valve
<b>KEVA</b>	- Air gun solenoid valve
<b>KEVF</b>	- Iron steam solenoid valve
<b>S1</b>	- Motor blowing photo cell switch
<b>S3</b>	- Board lighting switch
<b>S4</b>	- Board heating switch
<b>S5</b>	- Iron switch
<b>S6</b>	- Steam gun push button
<b>S7</b>	- Air gun push button
<b>S8</b>	- Blowing pedal
<b>S10</b>	- Boiler switch
<b>S12</b>	- Vaporization footboard (OPTIONAL)
<b>S13</b>	- Board resistance thermostat
<b>N1</b>	- Electronic level
<b>B1</b>	- Photo cell RT
<b>B2</b>	- Photo cell LF
<b>E1</b>	- Board lighting neon
<b>RP</b>	- Board resistance
<b>X1</b>	- Iron connector

**F**

<b>R-S-T</b>	- Phases
<b>N</b>	- Ligne neutre
<b>PE</b>	- Protection
<b>F0</b>	- Fusible de protection commande (1A)
<b>F1</b>	- Fusible à trois pôles
<b>K1</b>	- Contacteur moteur aspiration/soufflage
<b>H1</b>	- Voyant tension (GR=green) lumineux vert
<b>RT1</b>	- Relais thermique moteur aspiration/soufflage
<b>M3</b>	- Moteur triphasé aspiration/soufflage
<b>KEVS</b>	- Electrovanne échangeuse moteur aspiration/soufflage
<b>KVAP</b>	- Electrovanne vaporisation plan (OPTION)
<b>KEVAP</b>	- Electrovanne pistolet vapeur
<b>KEVA</b>	- Electrovanne pistolet air
<b>KEVF</b>	- Electrovanne vapeur fer
<b>S1</b>	- Interrupteur photocellule soufflage moteur
<b>S3</b>	- Interrupteur illumination plan
<b>S4</b>	- Interrupteur chauffage plan
<b>S5</b>	- Interrupteur fer
<b>S6</b>	- Bouton-poussoir pistolet vapeur
<b>S7</b>	- Bouton-poussoir pistolet air
<b>S8</b>	- Pédale soufflage
<b>S10</b>	- Interrupteur chaudière
<b>S12</b>	- Pédale vaporisateur (OPTION)
<b>S13</b>	- Thermostat résistance plan
<b>N1</b>	- Niveau électronique
<b>B1</b>	- Photocellule DROITE
<b>B2</b>	- Photocellule GAUCHE
<b>E1</b>	- Néon illumination plan
<b>RP</b>	- Résistance plan
<b>X1</b>	- Connecteur fer

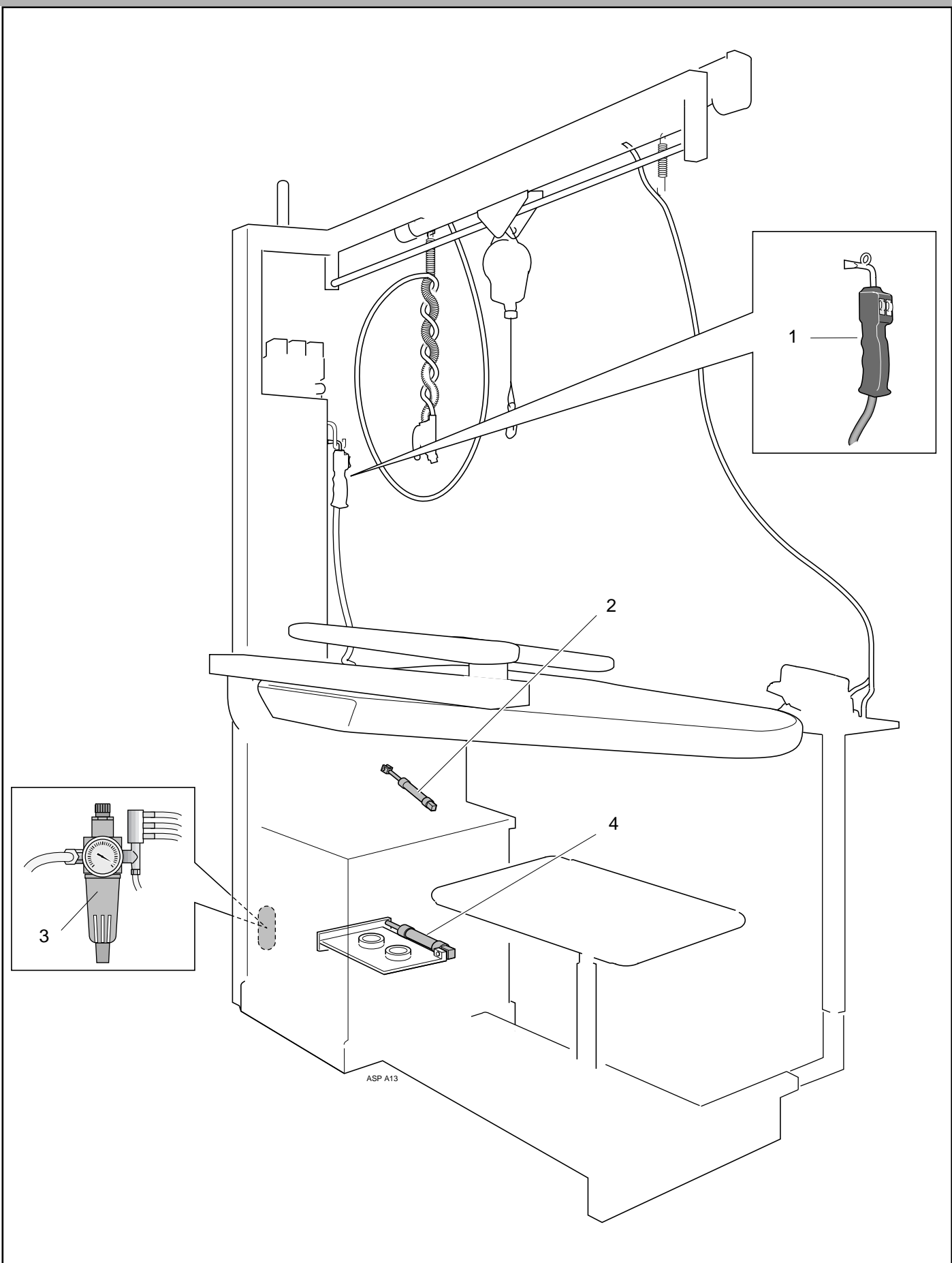
**E**

<b>R-S-T</b>	- Fases
<b>N</b>	- Línea neutra
<b>PE</b>	- Protección
<b>F0</b>	- Fusible de protección mando (1A)
<b>F1</b>	- Fusible de tres polos
<b>K1</b>	- Telerruptor motor aspiración/soplado
<b>H1</b>	- Indicador luminoso tensión (GR=green) color verde
<b>RT1</b>	- Relé térmico motor aspiración/soplado
<b>M3</b>	- Motor trifásico aspiración/soplado
<b>KEVS</b>	- Electroválvula intercambiadora motor asp./sopl.
<b>KVAP</b>	- Electroválvula vaporización superficie (OPTIONALS)
<b>KEVAP</b>	- Electroválvula pistola vapor
<b>KEVA</b>	- Electroválvula pistola aire
<b>KEVF</b>	- Electroválvula vapor plancha
<b>S1</b>	- Interruptor célula fotoeléctrica soplado motor
<b>S3</b>	- Interruptor iluminación superficie
<b>S4</b>	- Interruptor calentamiento superficie
<b>S5</b>	- Interruptor plancha
<b>S6</b>	- Pulsador pistola vapor
<b>S7</b>	- Pulsador pistola aire
<b>S8</b>	- Pedal soplado
<b>S10</b>	- Interruptor caldera
<b>S12</b>	- Tarima vaporización (OPTIONALS)
<b>S13</b>	- Termostato resistencia superficie
<b>N1</b>	- Nivel electrónico
<b>B1</b>	- Célula fotoeléctrica der.
<b>B2</b>	- Célula fotoeléctrica izq.
<b>E1</b>	- Fluorescente iluminación superficie
<b>RP</b>	- Resistencia superficie
<b>X1</b>	- Conector plancha



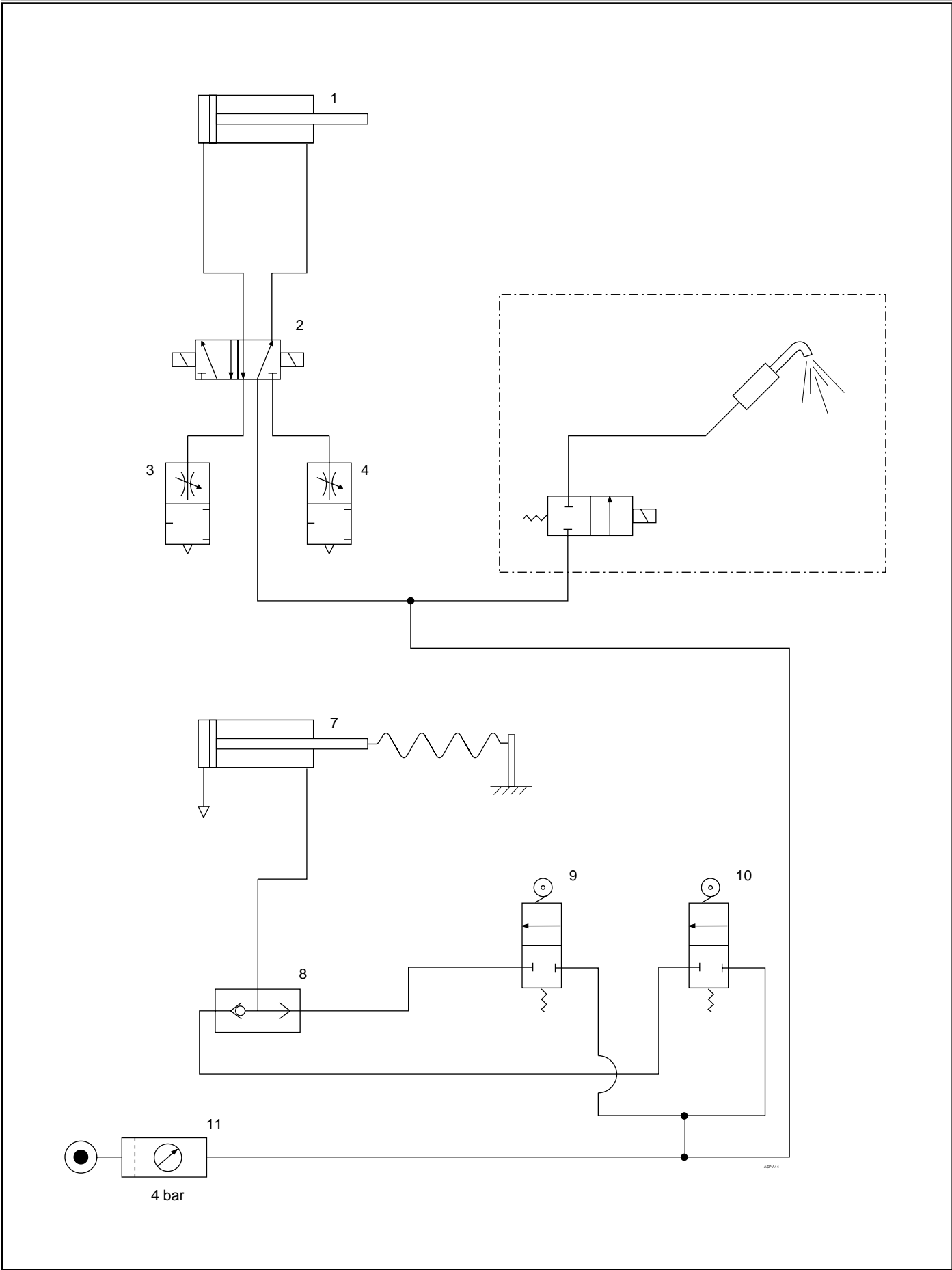
- I** LISTA COMPONENTI PNEUMATICI
- GB** PNEUMATIC COMPONENT LIST
- F** LISTE DES COMPOSANTS PNEUMATIQUES
- E** LISTA COMPONENTES NEUMÁTICOS

Allegato  
Enclosure  
Annexe  
Anexo



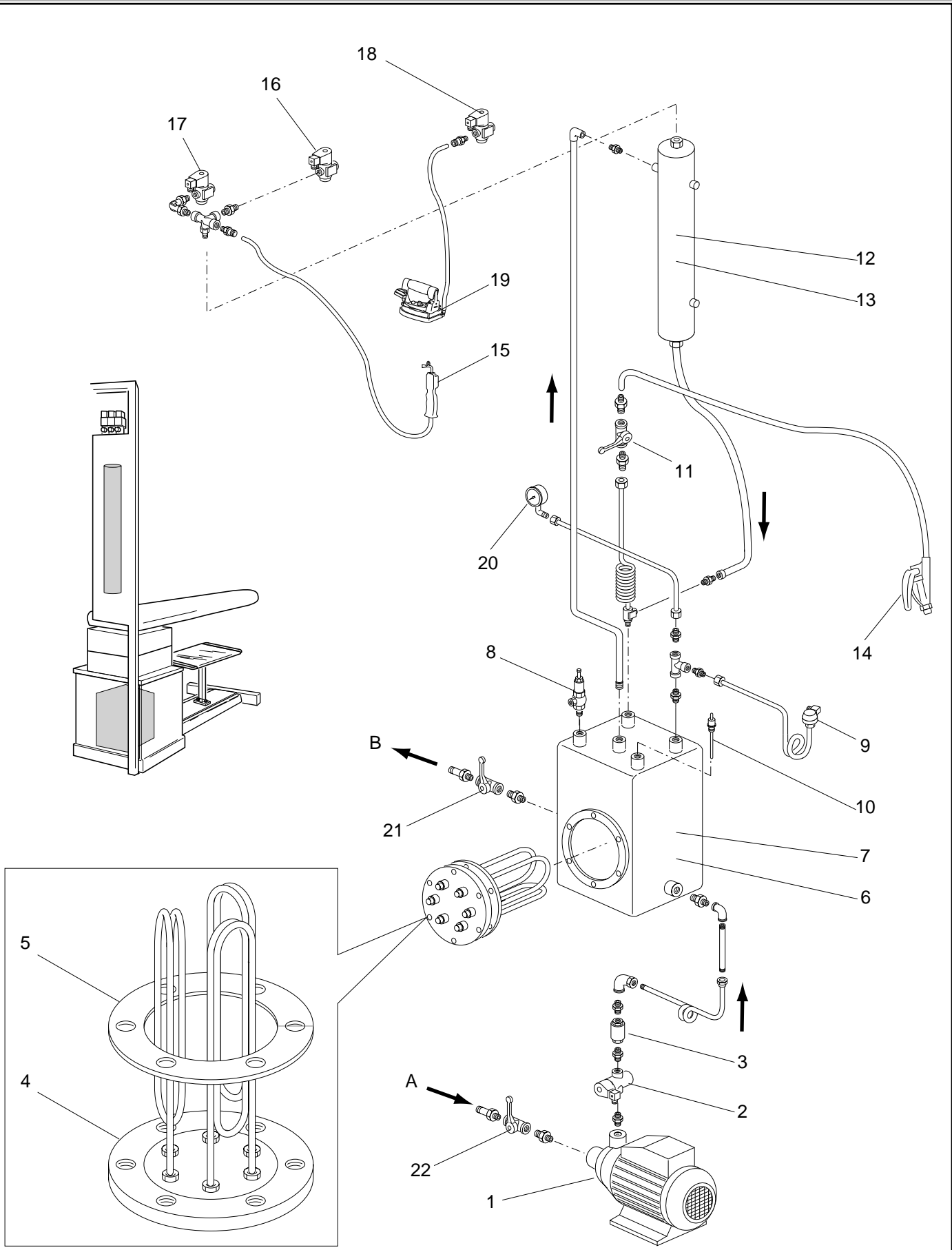


		<b>I</b>	<b>GB</b>	<b>F</b>	<b>E</b>
Nr	Cod.	Descrizione	Description	Description	Descripción
1	114.05	Pistola vapore	Steam gun	Pistolet vapeur	Pistola vapor
2	173.09	Cilindro Ø 16-50	Cylinder Ø 16-50	Vérin Ø 16-50	Cilindro Ø 16-50
3	173.04	Riduttore pressione con filtro e manometro impianto	Pressure reducer with filter and system pressure gauge	Détendeur air avec filtre et manomètre installation	Reductor presión con fil- tro y manómetro instalación
4	173.94	Cilindro Ø 20-145	Cylinder Ø 20-145	Vérin Ø 20-145	Cilindro Ø 20-145



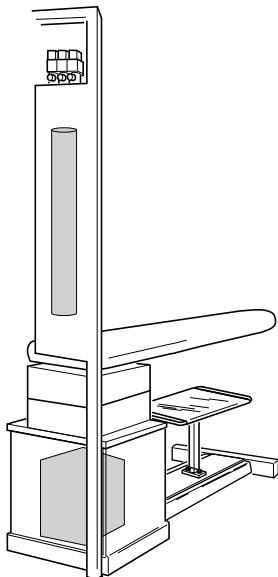
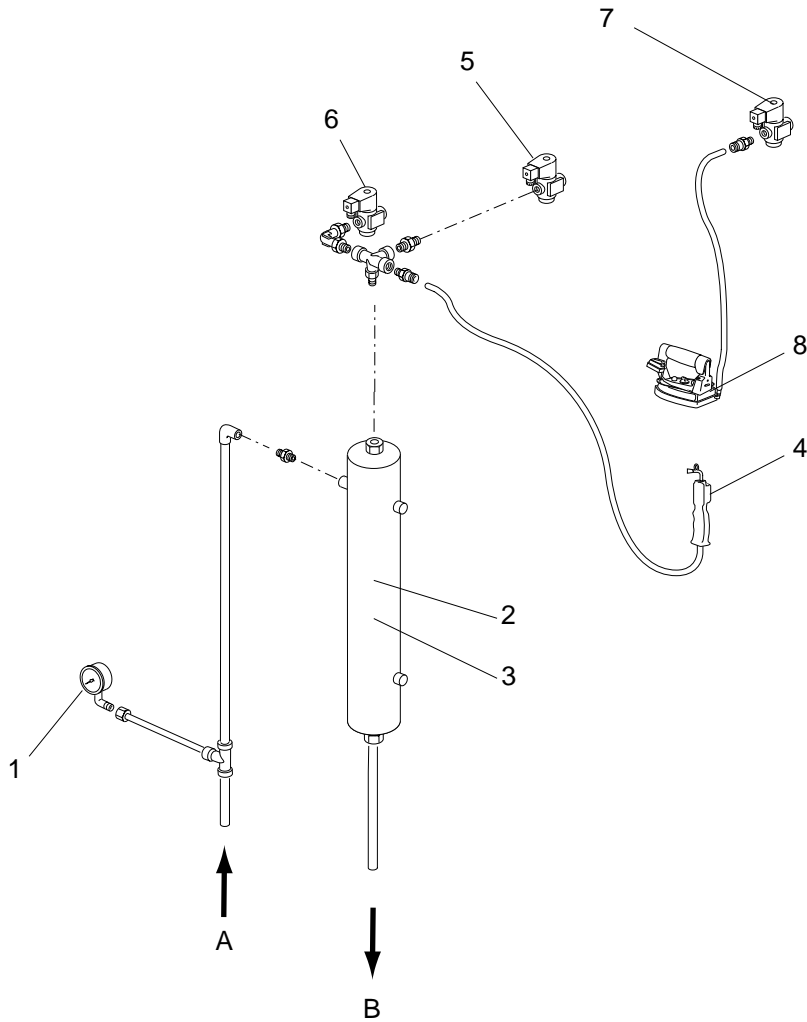


		<b>I</b>	<b>GB</b>	<b>F</b>	<b>E</b>
Nr	Cod.	Descrizione	Description	Description	Descripción
<b>1</b>	173.94	Pistone Ø 20-145	Piston Ø 20-145	Piston Ø 20-145	Pistón Ø 20-145
<b>2</b>	173.51	Valvola pistone	Piston valve	Soupape piston	Válvula pistón
<b>3-4</b>	173.29	Dosatore di scarico velocità pistone	Piston speed discharge proportioner	Purge d'air	Dosificador de descarga velocidad pistón
<b>5</b>	110.05	Valvola vapore con regolazione per pistola vapore	Steam valve with adjustment for steam gun	Soupape vapeur avec réglage pour pistolet vapeur	Válvula vapor con regulación para pistola vapor
<b>6</b>	114.05	Pistola aria-apore	Air-steam gun	Pistolet air-vapeur	Pistola aire-vapor
<b>7</b>	173.09	Pistone Ø 16-50	Piston Ø 16-50	Vérin Ø 16-50	Pistón Ø 16-50
<b>8</b>	173.21	Valvola selettiva di flusso	Selector valve	Soupape sélective de flux	Válvula selectora de flujo
<b>9</b>	173.83	Valvola 2/2 monostabile	Monostable valve 2/2	Soupape 2/2 mono-stable	Válvula 2/2 monoestable
<b>10</b>	173.83	Valvola 2/2 monostabile	Monostable valve 2/2	Soupape 2/2 mono-stable	Válvula 2/2 monoestable
<b>11</b>	173.04	Gruppo di condizionamento aria filtro, riduttore, manometro	Air filter, reduction unit, pressure gauge conditioning group	Contacteur pneumatique jeannette Groupe de conditionnement air filtre, réducteur, manomètre	Grupo de acondicionamiento aire filtro, reductor, manómetro



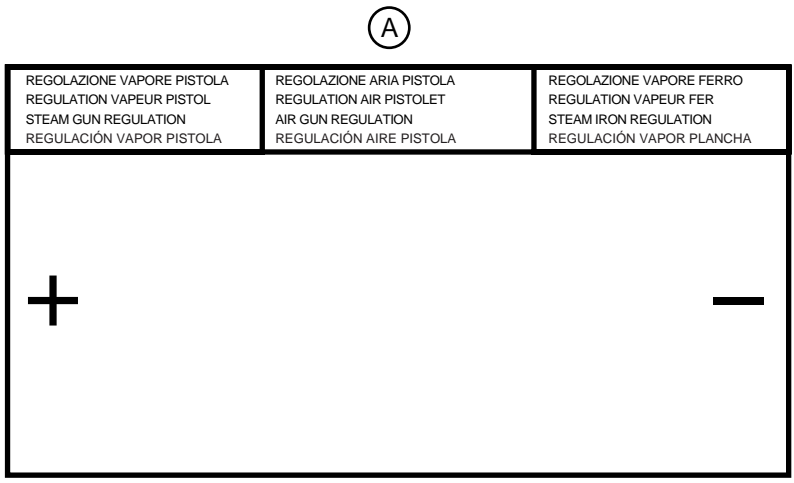
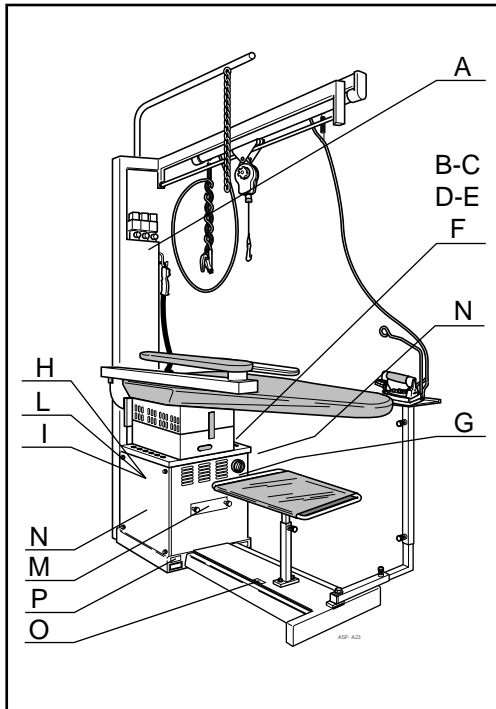


Nr	Cod.	Descrizione	Description	Description	Descripción
1	103.15	Elettropompa	Pump	Pompe a eau	Electrobomba
2	110.10	Elettrovalvola acqua Ø 4	Water solenoid valve Ø 4	Electrovanne eau Ø 4	Electroválvula hídrica Ø 4
3	127.02	Valvola di ritorno 3/8	Nonreturn valve 3/8	Clapet antiretour 3/8	Válvula 3/8
4	124.04	Resistenza flangiata 2600 Watt	Flanged resistance 2600 Watt	Résistance à brides 2600 Watt	Resistencia 2600 Watt
	124.05	Resistenza flangiata 3600 Watt	Flanged resistance 3600 Watt	Résistance à brides 3600 Watt	Resistencia 3600 Watt
5	125.09	Guarnizione Ø 129	Gasket Ø 129	Garniture Ø 129	Ø 129
6	000.01	Caldaia Lt. 3,9	Boiler lt. 3.9	Chaudière 3,9 lit.	Caldera 3,9 lit.
7	401.02	Isolante caldaia	Boiler isolant	Isolant chaudière	Isolante caldrea
8	127.11	Valvola di sicurezza 5 Bar	Safety valve 5 bars	Vanne de sécurité 5 Bar	Válvula 5 Bar
9	120.01	Pressostato MATER	MATER pressure switch	Pressostat MATER chaudière	Presostato MATER
10	135.01	Sonda caldaia	Electronic probe boiler	Sonde électrique de niveau	Sonda caldera
11	102.13	Rubinetto a farfalla	Cock	Robinet	Válvula
12	000.05	Serbatoio vapore	Steam tank	Rosié vapeur	Serbatoio vapor
13	401.06 LAV	Isolante serbatoio	Steam tank isolant	Isolant rosié	Isolante serbatoio
14	114.09	Pistola nebulizzatrice	Spraying gun	Pistolet nebulisateur	Pistola pulverizadora
15	114.05	Pistola aria-vapore	Air-steam gun	Pistolet air-vapeur	Pistola aire vapor
16	110.05	Elettrovalvola aria pistola	Air gun solenoid valve	Electrovanne air pistolet	Electroválvula aire pistola
17	110.05	Elettrov. vapore pistola	Steam gun solenoid valve	Electrov. vapeur pistolet	Electroválvula vapor pistola
18	110.05	Elettrov. vapore ferro	Steam iron solenoid valve	Electrov. vapeur fer a repasser	Electroválvula vapor plancha
19	107.07	Ferro da stiro VR piccolo	Iron steam VR piccolo	Fer a repasser VR piccolo	Plancha VR
	107.13	Ferro da stiro 2F jolly	Iron steam 2F jolly	Fer a repasser 2F jolly	Plancha 2F jolly
	107.40	Ferro da stiro 2F jolly + neb.	Iron steam 2F jolly + neb.	Fer a repasser 2F jolly + neb.	Plancha 2F jolly + pulv.
20	119.03	Manometro press. vapore	Pressure gauge steam	Manomètre pression vapeur	Manómetro vapor
21	102.03	Rubinetto di scarico caldaia	Drain cock boiler	Vanne de purge eau chaudière	Válvula de descarga hídrica
22	102.02	Rubinetto entrata acqua	Feed cock water	Vanne entrée eau	Válvula para carga hídrica
A	-	Entrata acqua	Water entry	Entrée eau	Carga hídrica
B	-	Scarico condensa	Drain cock	Sortie condense	Descarga hídrica





Nr	Cod.	Descrizione	Description	Description	Descripción
1	119.03	Manometro press. vapore	Steam pressure gauge	Manomètre pression vapeur	Manómetro vapor
2	000.05	Serbatoio vapore	Steam tank	Rosié vapeur	Serbatoio vapor
3	401.06 LAV	Isolante serbatoio	Isolant for tank	Isolant rosié	Isolante serbatoio
A	-	Entrata acqua	Water entry	Entrée eau	Carga hídrica
B	-	Scarico condensa	Drain cock	Sortie condense	Descarga hídrica
4	114.05	Pistola aria-vapore	Air-steam gun	Pistolet air-vapeur	Pistola aire vapor
5	110.05	Elettrov. reg. vap. pistola	Steam gun solenoid valve	Electrov. reg. vapeur pistolet	Electroválvula vapor pistola
6	110.05	Elettrov. reg. aria pistola	Air gun solenoid valve	Electrov. reg. air pistolet	Electroválvula aire pistola
7	110.05	Elettrov. regolazione vapore ferro	Steam iron solenoid valve	Electrov. reg. vapeur fer a repasser	Electroválvula vapor plancha
8	107.07	Ferro da stiro VR piccolo	Iron steam VR piccolo	Fer a repasser VR piccolo	Plancha VR
	107.13	Ferro da stiro 2F jolly	Iron steam 2F jolly	Fer a repasser 2F jolly	Plancha 2F jolly
	107.40	Ferro da stiro 2F jolly + neb.	Iron steam 2F jolly + neb.	Fer a repasser 2F jolly + neb.	Plancha 2F jolly + pulv.



(B)

INT. 1° FERRO INT. 1° FER 1° IRON SWITCH INT. 1ª PLANCHA
---

(C)

RISC. PIANO CHAFF. PLANCHE REP. IRON BOARD HEAT CALENT. SUPERFICIE
---

(D)

INT. CALDAIA INT. CHAUDIERE BOILER SWITCH INT. CALDERA
---

(E)

ASPIRAZIONE ASPIRATION SUCTION ASPIRACIÓN
--

(F)

ILLUMINAZIONE ECLAIRAGE ELEC. LIGHTED ILUMINACIÓN
--

(G)

INT. GENERALE INTERR. GENERAL MAIN SWITCH INT. GENERAL
---

(H)

<b>VOLT 380 -Hz 50</b>
------------------------

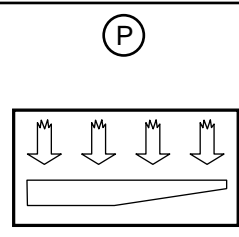
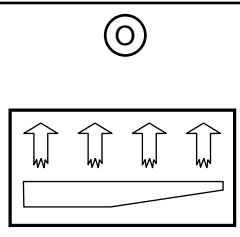
(I)

It is compulsory to connect the unit to the earth cable.  
 Es obligatorio conectar la máquina a la tierra  
 Il est obligatoire de connecter la machine à la prise de terre.  
 È obbligatorio collegare la macchina alla terra.



(M)

	<p>PULIRE IL FILTRO-ASPIRAZIONE ALMENO UNA VOLTA A SETTIMANA          É OBBLIGATORIO PULIRE IL FILTRO SOLAMENTE A MACCHINA SPENTA          INTERRUOTTORE GENERALE POSIZIONE "0"</p> <p>CLEAN THE VACUUM-FILTER AT LEAST ONCE A WEEK.          IT'S COMPULSORY TO CLEAN THE VACUUM-FILTER ONLY WITH THE          MACHINE OFF - MAIN SWITCH IN "0" POSITION</p> <p>NETTOYER LE FILTRE-ASPIRATION AU MOINS UNE FOIS PAR SEMAINE.          IL EST OBBLIGATOIRE DE NETTOYER LE FILTRE SEULEMENT AVEC LA MACHINE ARRETEE          (INTERRUPTEUR GENERAL EN POS. "0")</p> <p>LIMPIAR EL FILTRO ASPIRACIÓN POR LO MENOS UNA VEZ A LA SEMANA, ES OBLIGATORIO LIMPIAR          EL FILTRO EXCLUSIVAMENTE CON LA MÁQUINA APAGADA Y EL INTERRUPTOR GENERAL EN POSICIÓN "0".</p>
--	--





**I**

- A - Etichetta regolazione:  
\_vapore pistola  
\_aria pistola  
\_vapore ferro
- Etichetta interruttori:
- B - 1° ferro  
C - riscaldamento piano  
D - caldaia  
E - aspirazione  
F - neon illuminazione piano di lavoro  
G - Etichetta interruttore generale  
H - Etichetta voltaggio frequenza  
I - Etichetta collegamento a terra macchina  
L - Etichetta tensione  
M - Etichetta disposizioni  
di manutenzione feltro ghigliottina  
N - Etichetta "NON ENTRARE  
CON LE MANI NEL VANO MOTORE"  
O - Etichetta aspirazione fotocellula  
P - Etichetta pedale

**GB**

- A - Adjustment label:  
\_steam gun  
\_air gun  
\_iron gun
- Switch label:
- B - 1<sup>st</sup> iron  
C - plain heating  
D - boiler  
E - aspiration  
F - work table lighting neon  
G - Main switch label  
H - Voltage and frequency label  
I - Machine earthing label  
L - Tension label  
M - Guillotine felt maintenance  
instruction label  
N - "DO NOT PUT HANDS IN THE  
MOTOR SPACE" label  
O - Photo cell suction label  
P - Pedal label

**F**

- A - Etiquette réglage:  
\_vapeur pistolet  
\_air pistolet  
\_vapeur fer
- Etiquette interrupteurs:
- B - 1er fer  
C - chauffage plane  
D - chaudière  
E - aspiration  
F - néon illumination plan de travail  
G - Etiquette interrupteur général  
H - Etiquette voltage et fréquence  
I - Etiquette liaison de terre de la machine  
L - Etiquette tension  
M - Etiquette disposition et manutention filtre guillotine  
N - Etiquette "NE PAS INTRODUIRE LE  
MAINS DANS LA CAGE DU MOTEUR"  
O - Etiquette aspiration photocellule  
P - Etiquette pédale

**E**

- A - Etiqueta regulación:  
- vapor pistola  
- aire pistola  
- vapor plancha
- Etiqueta interruptores
- B - 1° plancha  
C - Calentamiento superficie  
D - Caldera  
E - Aspiración  
F - Fluorescente iluminación superficie de trabajo  
G - Etiqueta interruptor general  
H - Etiqueta voltaje frecuencia  
I - Etiqueta conexión a tierra máquina  
L - Etiqueta tensión  
M - Etiqueta disposiciones de mantenimiento fieltro  
guillotina  
N - Etiqueta "NO INTRODUCIR LAS MANOS EN EL  
ALOJAMIENTO DEL MOTOR"  
O - Etiqueta aspiración célula fotoeléctrica  
P - Etiqueta pedal



**COCCHI** s.r.l.

**COSTRUZIONE IMPIANTI STIRATURA AUTOMATICA**

Via Newton, 8 - 40017 San Giovanni in Persiceto - (BO) - ITALY

Tel. ++39 / 51 / 821787 - Fax ++39 / 51 / 826935