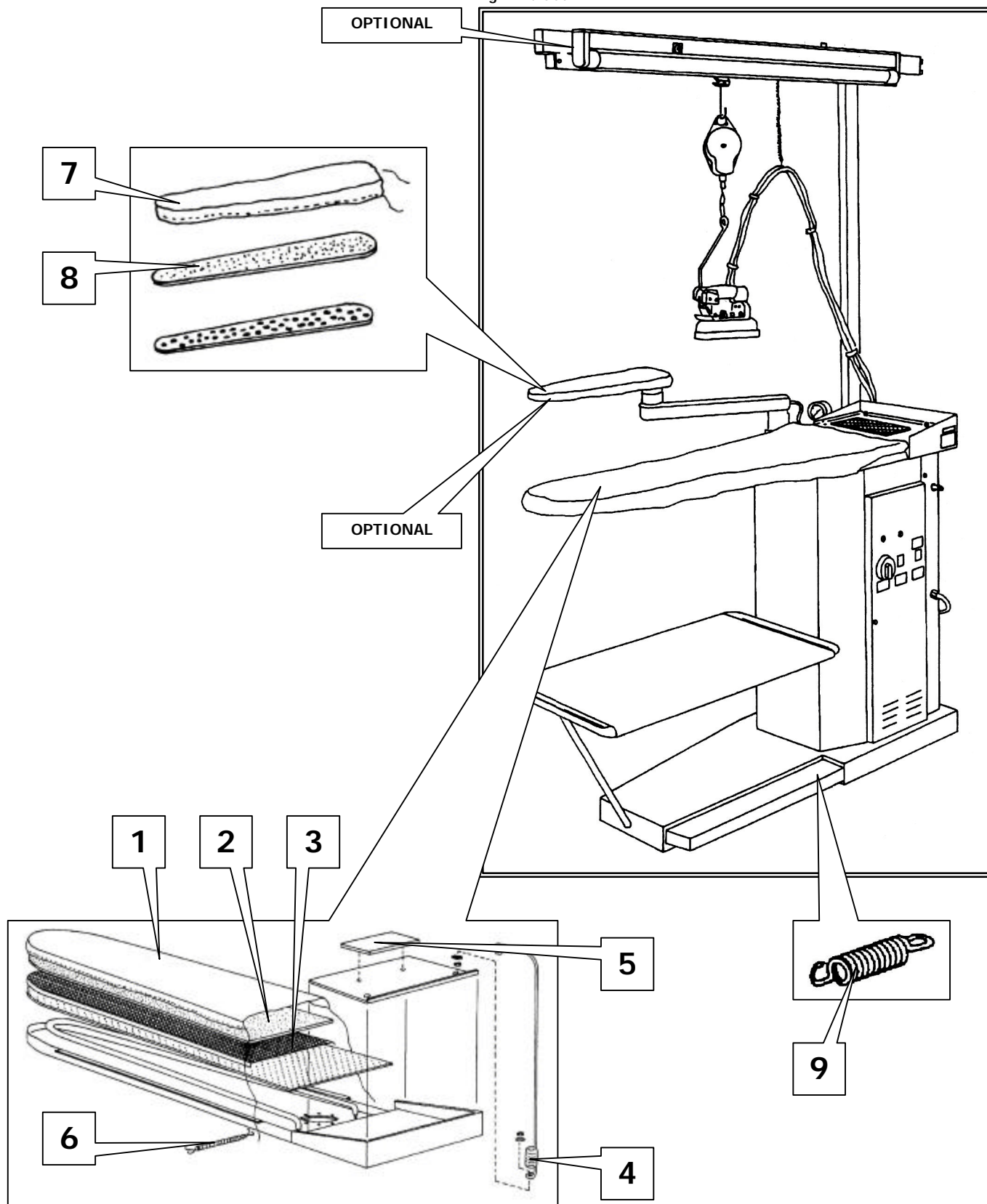


fig. A.1 / abb. A.1



**I**

N°	DESCRIZIONE	CODICE
1	COPERTINA PIANO	112.03
2	MOLLETTONE PIANO	113.01
3	RETE MERA CLON	112.19
4	ANTENNA TUBO CAVO FERRO	171.01
5	APPOGGIA FERRO	107.01
6	MOLLA PER TELO	131.01
7	COPERTINA BRACCIOLO ( optional )	112.06
8	MOLLETTONE BRACCIOLO ( optional )	113.03
9	MOLLA PEDALE	131.02

**GB**

N°	DESCRIPTION	CODE
1	BOARD COVER	112.03
2	BOARD FLANNEL	113.01
3	MERA CLON NET	112.19
4	AFRIAL FOR IRON WIRE	171.01
5	IRON WELL	107.01
6	SPRING FOR BOARD COVER	131.01
7	SLEEVE BOARD COVER ( optional )	112.06
8	SLEEVE BOARD FLANNEL ( optional )	113.03
9	PEDAL SPRING	131.02

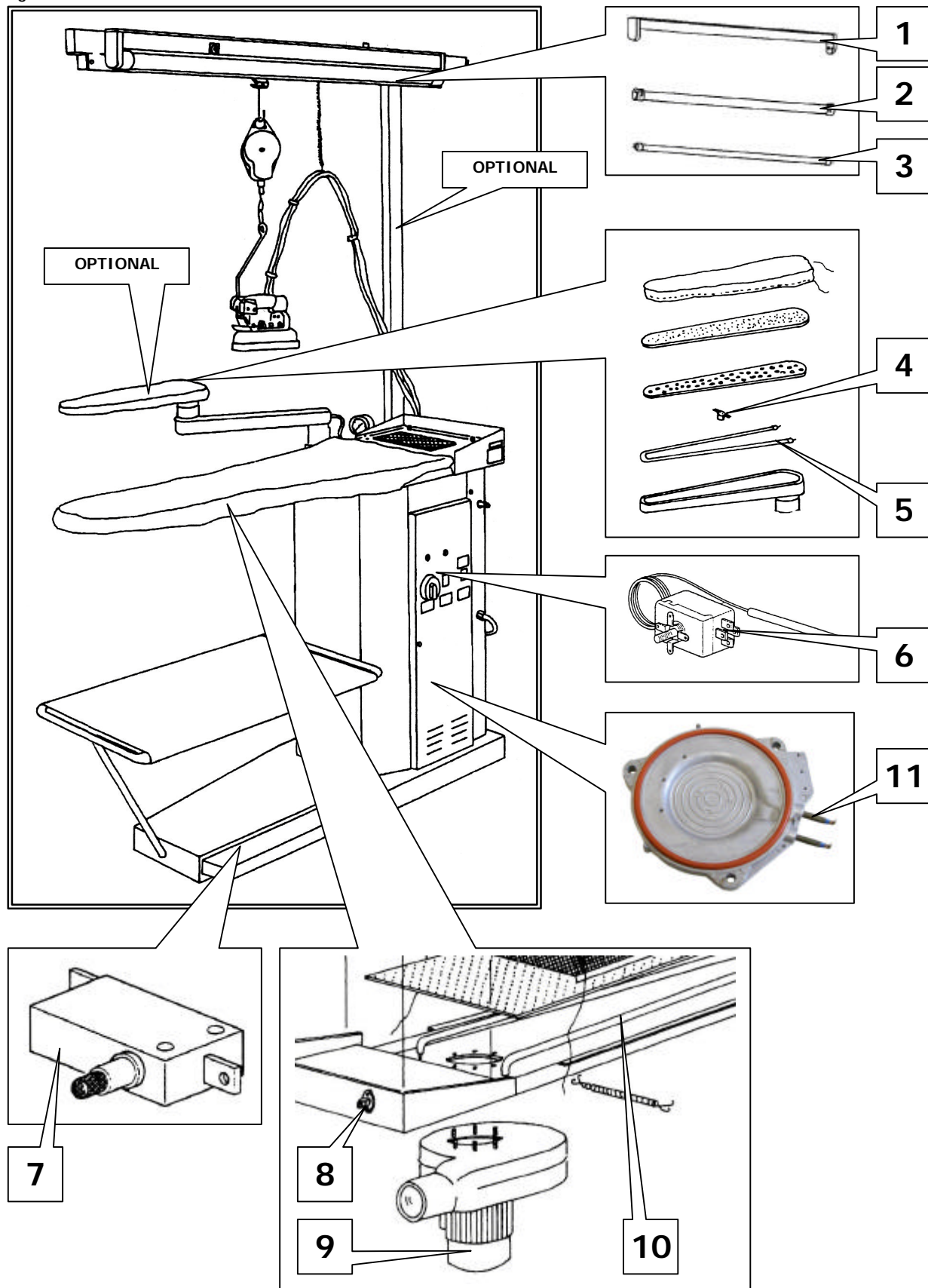
**F**

N°	DESCRIPTION	CODE
1	COUVERTURE PLATEAU	112.03
2	MOLLETTON PLATEAU	113.01
3	GRILLE MERA CLON	112.19
4	ANTENNE TUYAU CABLE ELECTRIQUE FER	171.01
5	APPUIE FER	107.01
6	RESSORT POUR COUVERTURE	131.01
7	COUVERTURE JEANNETTE MANCHES ( optional )	112.06
8	MOLLETTON JEANNETTE MANCHES ( optional )	113.03
9	RESSORT PEDAL	131.02

**D**

N°	BESCHREIBUNG	KODEX
1	ARBEITSPLETTEN-BEZUG	112.03
2	MOLTON	113.01
3	NETZ MERA CLON	112.19
4	ANTENNE	171.01
5	BUGELEISENSTANDER	107.01
6	FEDER MIT GITTERBLECH	131.01
7	DAS DECKEL FUR DIE ARMLEHNE REIBUERSCHLUB( optional )	112.06
8	DAS MOLL FUR ARM ( optional )	113.03
9	FEDER PEDAL	131.02

fig. B.1 / abb. B.1



**I**

N°	DESCRIZIONE	CODICE
1	PLAFONIERA ( optional )	151.40
2	TUBO DI PROTEZIONE ( optional )	151.18
3	TUBO AL NEON ( optional )	151.17
4	TERMOSTATO RESISTENZA BRACCIOLO 80° C ( optional )	147.04
5	RESISTENZA BRACCIOLO 200 W ( optional )	124.42
6	TERMOSTATO PIANO 120° C	147.02
7	MICROINTERRUPTORE PEDALE	104.11
8	CONNETTORE FERRO	132.06
9	MOTORE ASPIRAZIONE PIANO	108.05
10	RESISTENZA PIANO 1000 W	124.39
11	RESISTENZA CALDAIA 1500 W	124.10

**GB**

N°	DESCRIPTION	CODE
1	CEILING LAMP ( optional )	151.40
2	PROTECTION TUBE ( optional )	151.18
3	NEON ( optional )	151.17
4	SLEEVE BOARD RESISTANCE THERMOSTAT 80° C ( optional )	147.04
5	SLEEVE BOARD RESISTANCE 200 W ( optional )	124.42
6	BOARD THERMOSTAT 120° C	147.02
7	PEDAL MICROSWITCH	104.11
8	IRON CONNECTOR	132.06
9	BOARD SUCTION MOTOR	108.05
10	BOARD RESISTANCE 1000 W	124.39
11	BOILER RESISTANCE 1500 W	124.10

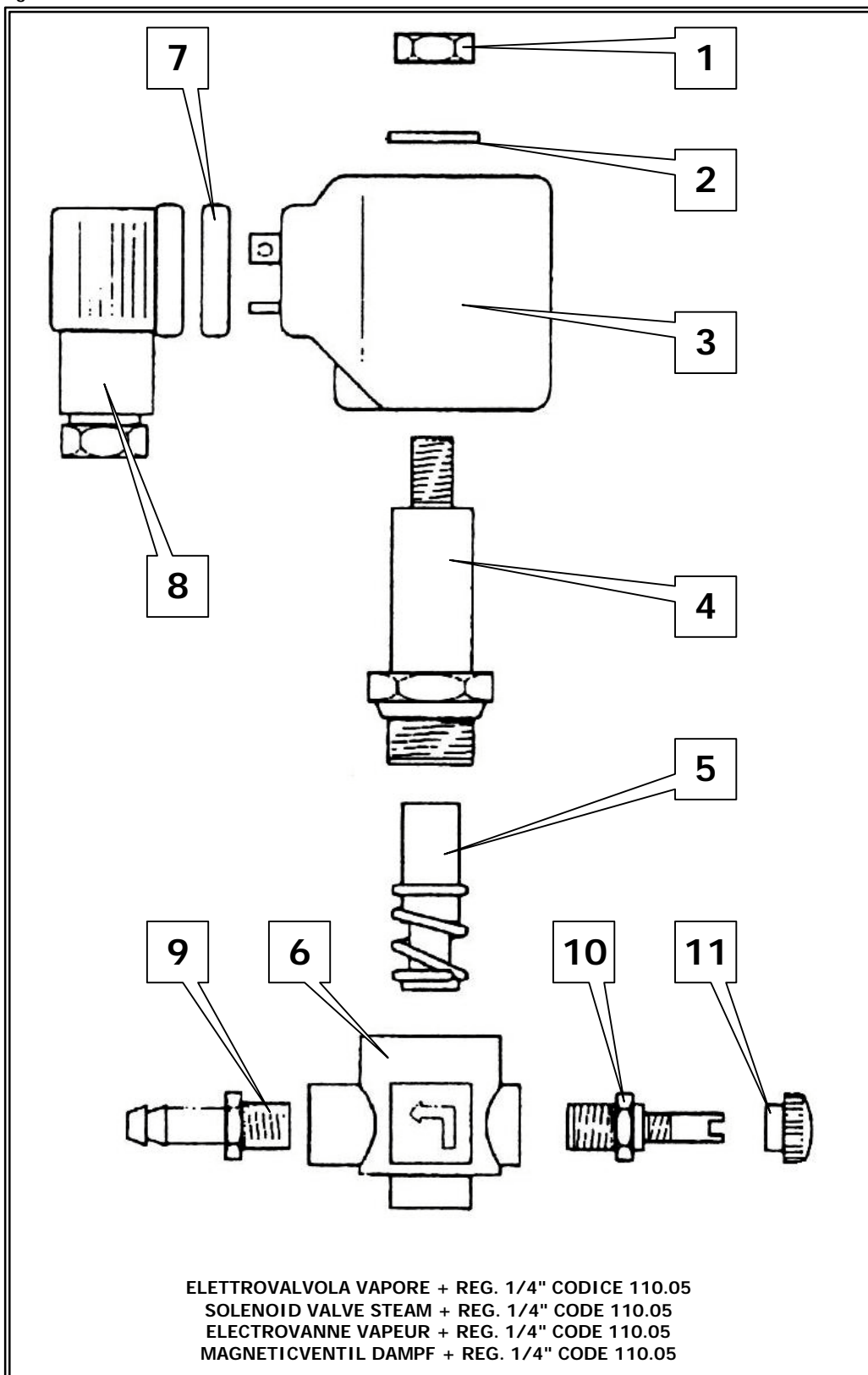
**F**

N°	DESCRIPTION	CODE
1	PLAFONNIER ( optional )	151.40
2	TUYAU DE PROTECTION ( optional )	151.18
3	NEON ( optional )	151.17
4	THERMOSTAT RESISTANCE JEANNETTE MANCHES 80° C ( optional )	147.04
5	RESISTANCE JEANNETTE MANCHES 200 W ( optional )	124.42
6	THERMOSTAT 120° C DU PLATEAU	147.02
7	MICROINTERRUPTEUR POUR PEDALE	104.11
8	CONNECTEUR FER	132.06
9	MOTEUR ASPIRATION PLATEAU	108.05
10	RESISTANCE PLATEAU 1000 W	124.39
11	RESISTANCE CHAUDIERE 1500 W	124.10

**D**

N°	BESCHREIBUNG	CODE
1	DEKKENLAMPE ( optional )	151.40
2	ROHRE FUR SCHUTZ ( optional )	151.18
3	NEONBELEUCHTUNG ( optional )	151.17
4	DER THERMOSTAT FUR ARMWIDERSTAND 80° C ( optional )	147.04
5	ARMWIDERSTAND 200 W ( optional )	124.42
6	THERMOSTAT 120° C	147.02
7	PEDAL MIKROSHALTER	104.11
8	KONNECTOR FUR BUGELEISEN	132.06
9	SAUGEND MOTOR	108.05
10	ARBEITSPLETTEN WIDERSTAND 1000 W	124.39
11	ARMWIDERSTAND DAMPFKESSEL 1500 W	124.10

fig. B.2 / abb. B.2



**I**

N°	DESCRIZIONE	CODICE
1	DADO	----
2	RONDELLA	----
3	BOBINA 220 V BOBINA 24 V	110.03 110.01
4	CANOTTO	110.30
5	NUCLEO EPDM NUCLEO TEFLON	110.34 110.35
6	CORPO	----
7	GUARNIZIONE	----
8	CONNETTORE	110.08
9	PORTA TUBO	----
10	REGOLATORE	110.28
11	MANOPOLA	110.15

**GB**

N°	DESCRIPTION	CODE
1	LOCK NUT	----
2	WASHER	----
3	BOBINE 220 V MAGNETIC UNIT 24 V	110.03 110.01
4	TUBE GUIDE	110.30
5	CORE EPDM CORE TEFLON	110.34 110.35
6	BODY	----
7	GASKET	----
8	CONNECTOR	110.08
9	PIPE HOLDER	----
10	REGULATOR	110.28
11	HANDLE	110.15

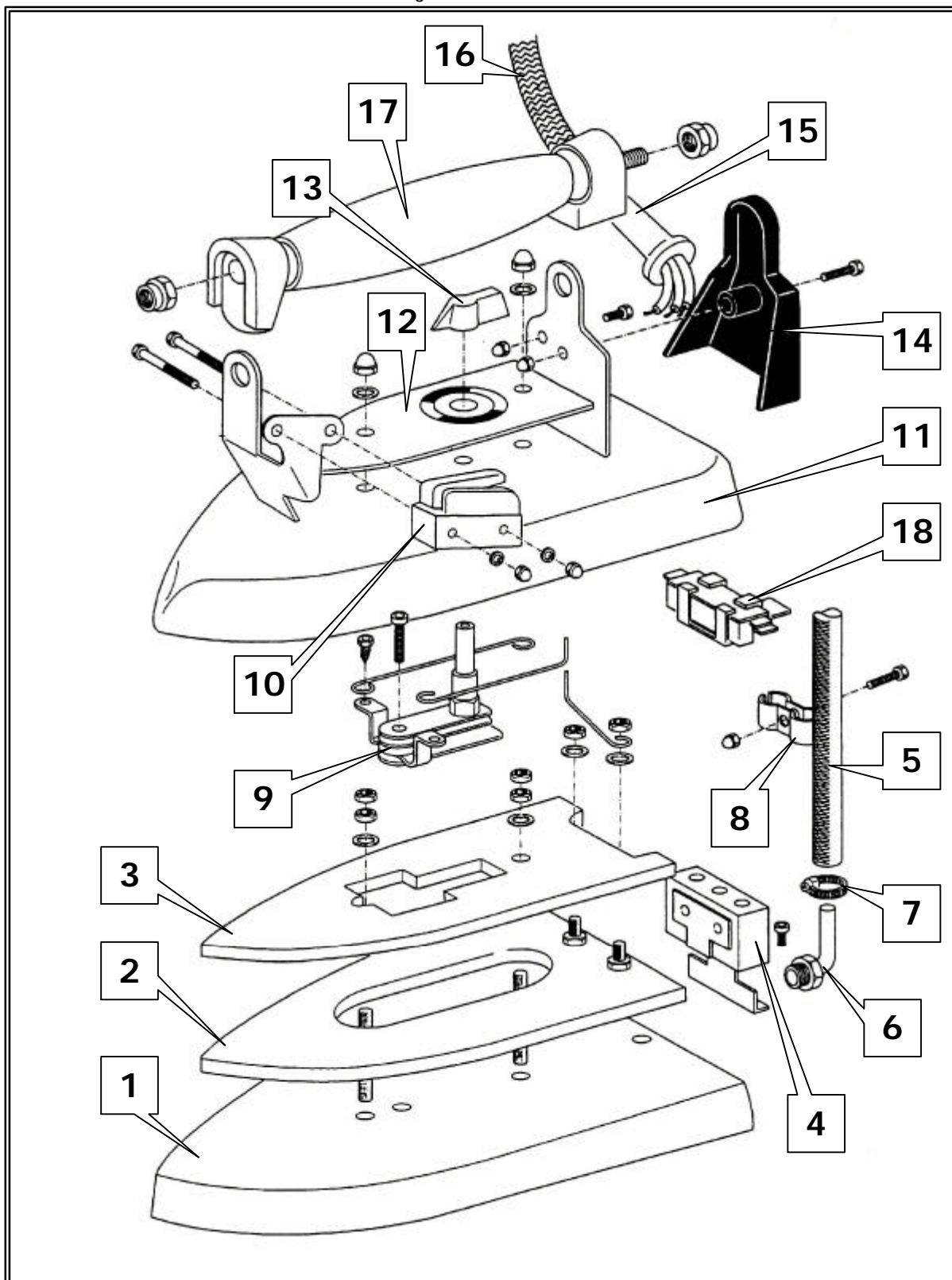
**F**

N°	DESCRIPTION	CODE
1	ECROU	----
2	RONDELLE	----
3	MAGNETIC UNIT 220 V BOBINE 24 V	110.03 110.01
4	TUBE	110.30
5	NOYEU EPDM NOYEU TEFLON	110.34 110.35
6	CORPS	----
7	JOINT TORIQUE	----
8	CONNECTEUR	110.08
9	PORTE TUYAU	----
10	REGULATEUR	110.28
11	BOUTON	110.15

**D**

N°	BESCHREIBUNG	CODE
1	MUTTER	----
2	SCHEIBE	----
3	M.SPULE 200 V M.SPULE 24 V	110.03 110.01
4	ROHR	110.30
5	ANKER EPDM ANKER TEFLON	110.34 110.35
6	KORPER	----
7	DICHTUNG	----
8	VERBINDUNG	110.08
9	ROHRHALTER	----
10	REGLER	110.28
11	REGLERKNOPF	110.15

fig. C.1 / abb. C.1



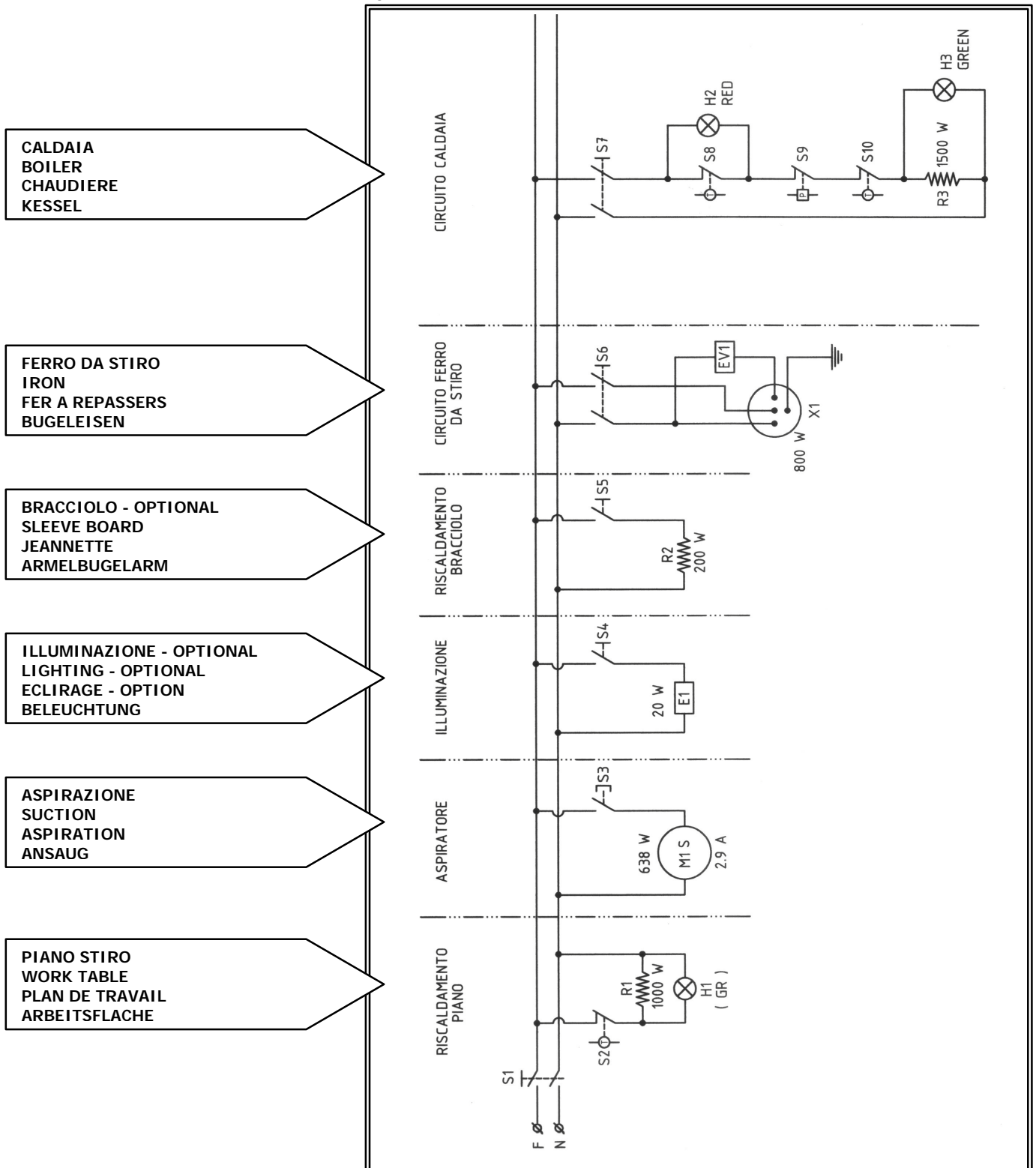
F

N°	DESCRIPTION	CODE
1	PLAQUE RADIANTE FER 2F	107.10
	PLAQUE RADIANTE FER JOLLY	107.31
	PLAQUE RADIANTE FER VR G.	107.34
	PLAQUE RADIANTE FER COCCHI	107.35
2	RESISTANCE CUIRASSE	124.43
3	LEST	107.30
4	TABEAU DE BORNES	107.02
5	TUYAU VAPEUR	107.25 107.22 - 3.1 MT 107.26 - 2.2 MT
6	RACCORD TUYAU VAPEUR	107.20
7	COLLIER FIXAGE TUYAU VAPEUR	121.01
8	COLLIER DOUBLE	107.21
9	THERMOSTAT	147.06
10	MICROINTERRUPTEUR	104.04
11	PETITE CALOTTE	-----
12	PLAQUE AVEC RAPPRESENTATION TEMPERATURE FER	-----
13	INDICATEUR TEMPERATURE THERMOSTAT	-----
14	PROTECTION TABLEAU DE BORNES	-----
15	CORDON ELECTRIQUE FER	-----
16	CORDON ELECTRIQUE RECOUVERT	107.27 107.28 - 2.2 MT 107.32 - 3.1 MT
17	POIGNEE EN LIEGE	107.42
18	FUSIBLE THERMIQUE TY 80 / A	107.29

D

N°	BESCHREIBUNG	KODEX
1	HEIZPLATTE BUGELEISEN 2F	107.10
	HEIZPLATTE BUGELEISEN JOLLY	107.31
	HEIZPLATTE BUGELEISEN VR G.	107.34
	HEIZPLATTE BUGELEISEN COCCHI	107.35
2	GEPANZERTER WIDERSTAND	124.43
3	BALLAST	107.30
4	KLEMMKASTEN	107.02
5	DAMPFSCHALAUCH	107.25 107.22 - 3.1 MT 107.26 - 2.2 MT
6	DAMPFSCHALAUCH VERBINDUNG	107.20
7	DAMPFSCHALAUCH SCHELLE	121.01
8	DAMPFSCHALAUCHDOPPELSCELLE	107.21
9	THERMOSTAT	147.06
10	MIKROSCHALTER	104.04
11	KALOTTE	-----
12	ANZEIGER FUR BUGELEISENTEMPERATURE	-----
13	THERMOSTAT TEMPERATURDREHREGLER	-----
14	KLEMMKASTEN SCHUTZ	-----
15	BUGELEISEN STROMKABEL	-----
16	UMKLOPPELTES BUGELEISEN STROMKABEL	107.27 107.28 - 2.2 MT 107.32 - 3.1 MT
17	KORKHANDGRIFF	107.42
18	THERMOSICHERUNG	107.29

fig. D.1 / abb. D.1



CALDAIA  
 BOILER  
 CHAUDIERE  
 KESSEL

FERRO DA STIRO  
 IRON  
 FER A REPASSERS  
 BUGELEISEN

BRACCIOLO - OPTIONAL  
 SLEEVE BOARD  
 JEANNETTE  
 ARMELBUGELARM

ILLUMINAZIONE - OPTIONAL  
 LIGHTING - OPTIONAL  
 ECLIRAGE - OPTION  
 BELEUCHTUNG

ASPIRAZIONE  
 SUCTION  
 ASPIRATION  
 ANSAUG

PIANO STIRO  
 WORK TABLE  
 PLAN DE TRAVAIL  
 ARBEITSFLACHE

	I	GB	F	D	
<b>Cod.</b>	<b>Ref.</b>	<b>Descrizione</b>	<b>Description</b>	<b>Description</b>	<b>Bezeichnung</b>
104.02	S1	Interruttore generale	Main switch	Interrupteur général	Hauptschalter
147.02	S2	Termostato piano	Work table thermostat	Thermostat plan de travail	Bügelflächenthermostat
104.11	S3	Microinterruttore pedale aspirazione	Suction pedal microswitch	Microrupteur pédale aspiration	Mikroschalter Luftstossteuerpedal
104.02	S4	Interruttore illuminazione piano	Board lighting switch	Interrupteur illumination plan	Schalter- Flächenbeleuchtung
104.08	S5	Interruttore riscaldamento bracciolo	Sleeve board heating switch	Interrupteur chauffage jeanette	Schalter für ärmel- bügelwange
104.02	S6	Interruttore ferro	Iron switch	Interrupteur fer	Schalter Bügeleisen
104.02	S7	Interruttore caldaia	Boiler switch	Interrupteur chaudière	Kesselschalter
147.07	S8	Termostato mancanza acqua	Thermostat lack of water	Thermostat manque eau	Wasserthermostat
120.01	S9	Pressostato di lavoro	Working pressure switch	Pressostat de travail	Druckschalter
147.07	S10	Termostato di sicurezza	Safety thermostat	Thermostat de securite	Druckschalter
104.06	H1	Spia resistore piano stiro	Work table pilot light	Voyant lumineux plan de travail	Kontrollleuchte- Bügelflächenwiderstand
104.06	H2	Spia mancanza acqua	Lack of water pilot light	Voyant lumineux manque eau	Wasser Kontrollleuchte
104.06	H3	Spia resistore caldaia	Boiler's pilot light	Voyant lumineux chaudiere	Kontrollleuchte- kesselwiderstand
124.39	R1	Resistenza piano 1000W	Board resistance 1000W	Résistance plan 1000 W	Bügelflächenheizstab 1000 W
124.42	R2	Resistenza bracciolo 200W	Sleeve board resistance 200W	Résistance jeanette 200 W	Bügelflächenheizstab 200 W
124.05	R3	Resistore caldaia	Boiler resistance	Résistance chaudière	Kesselheizstab
108.05	M1	Motore aspirazione	Suction motor	Moteur aspiration	Ansaugmotor
151.64	E1	Neon illuminazione piano	Board lighting neon	Néon illumination plan	Neonleuchte für Bügelflächenbeleuchtung
132.03	X1	Presa 4 poli per ferro	Iron 4 poles socket	Embase 4 pôles pour fer	Steckdose 4 pole für bügeleisen

fig. E.1 / abb. E.1

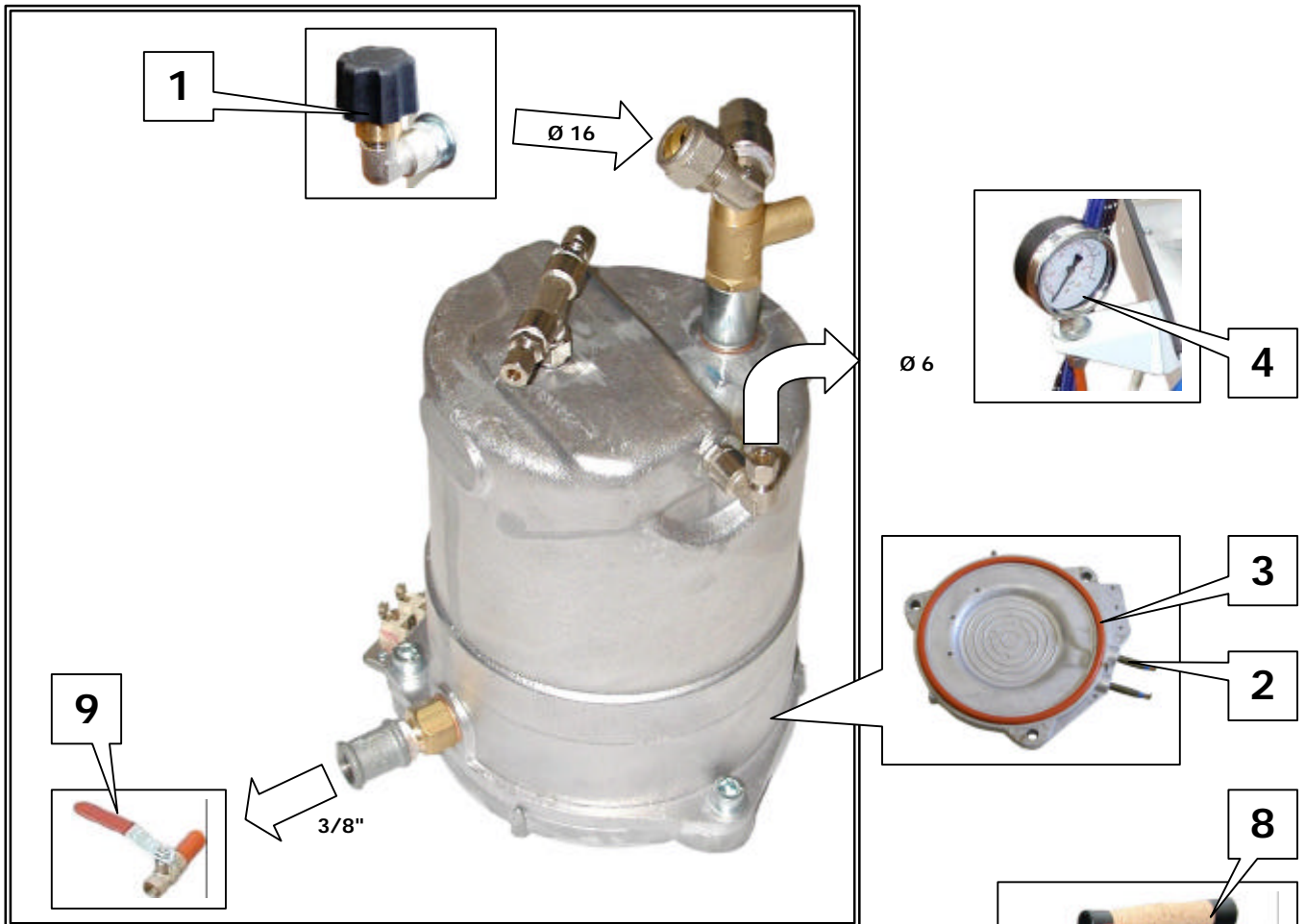
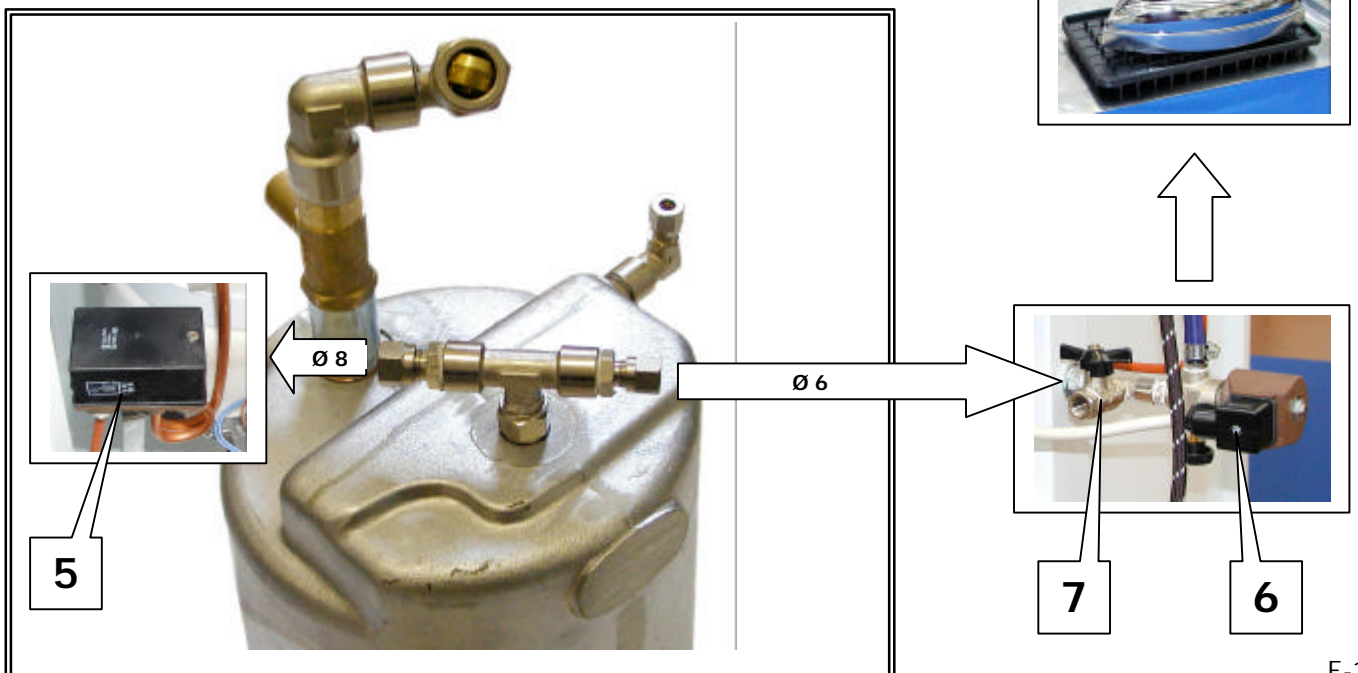


fig. E.2 / abb. E.2



**I**

	<b>DESCRIZIONE</b>	<b>CODICE</b>
1	TAPPO INSERIMENTO ACQUA CON VALVOLA E GUARNIZIONE DI SICUREZZA	127.09
2	RESISTENZA 1500 W	124.10
3	GUARNIZIONE	125.63
4	MANOMETRO PRESSIONE VAPORE	119.03
5	PRESSOSTATO	120.01
6	ELETTRIVALVOLA	110.05
7	RUBINETTO FARFALLA 1/4"	102.13
8	FERRO DA STIRO JOLLY	107.38
9	RUBINETTO SCARICO CALDAIA	102.03

**GB**

	<b>DESCRIPTION</b>	<b>CODE</b>
1	INSERTION WATER PLUG WITH VALVE AND SAFETY GASKET	127.09
2	RESISTANCE 1500 W	124.10
3	SEAL	125.63
4	STEAM PRESSURE GAUGE	119.03
5	PRESSURE SWITCH	120.01
6	SOLENOID VALVE	110.05
7	COCK	102.13
8	IRON JOLLY	107.38
9	COCK	102.03

**F**

	<b>DESCRIPTION</b>	<b>CODE</b>
1	BOUCHE REMPLISSAGE EAU AVEC SOUPAPE ET GARNITURE DE SÛRETÉ	127.09
2	RESISTANCE 1500 W	124.10
3	JOINT	125.63
4	MANOMETRE PRESSION VAPEUR	119.03
5	PRESSOSTAT	120.01
6	ELECTROVANNE	110.05
7	ROBINET	102.13
8	FER A REPASSERS JOLLY	107.38
9	ROBINET	102.03

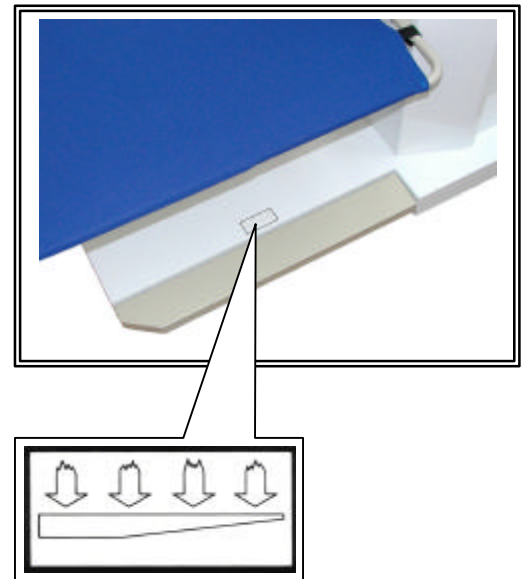
**D**

	<b>BESCHREIBUNG</b>	<b>CODE</b>
1	EINFÜGUNG-WASSER-STECKER MIT VENTIL UND SICHERHEIT DICHTUNG	127.09
2	WIDERSTAND 1500 W	124.10
3	DICHTUNG	125.63
4	DAMPFDRUCK MANOMETER	119.03
5	DRUCKSCHALTER	120.01
6	MAGNETVENTIL	110.05
7	HAHN	102.13
8	BUGELEISEN JOLLY	107.38
9	HAHN	102.03

fig. f.1 / abb. f.1



fig. f.2 / abb. f.2



SCARICO CALDAIA  
 VIDANGE CHAUDIERE  
 BOILER DISCHARGE  
 ABFLUB KESSEL

**VOLT 220-Hz 50**

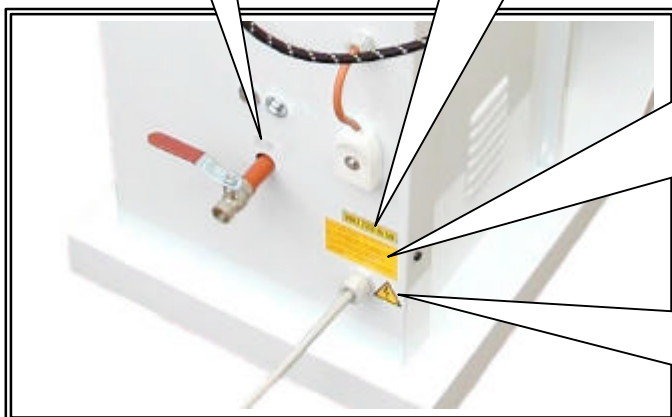


fig. f.3 / abb. f.3

**It is compulsory to connect the unit to the earth cable.**  
**Es ist obligatorisch, die Maschine an den Erdungskabel zu verbinden.**  
**Il est obligatoire de connecter la machine à la prise de terre.**  
**È obbligatorio collegare la macchina alla terra.**

