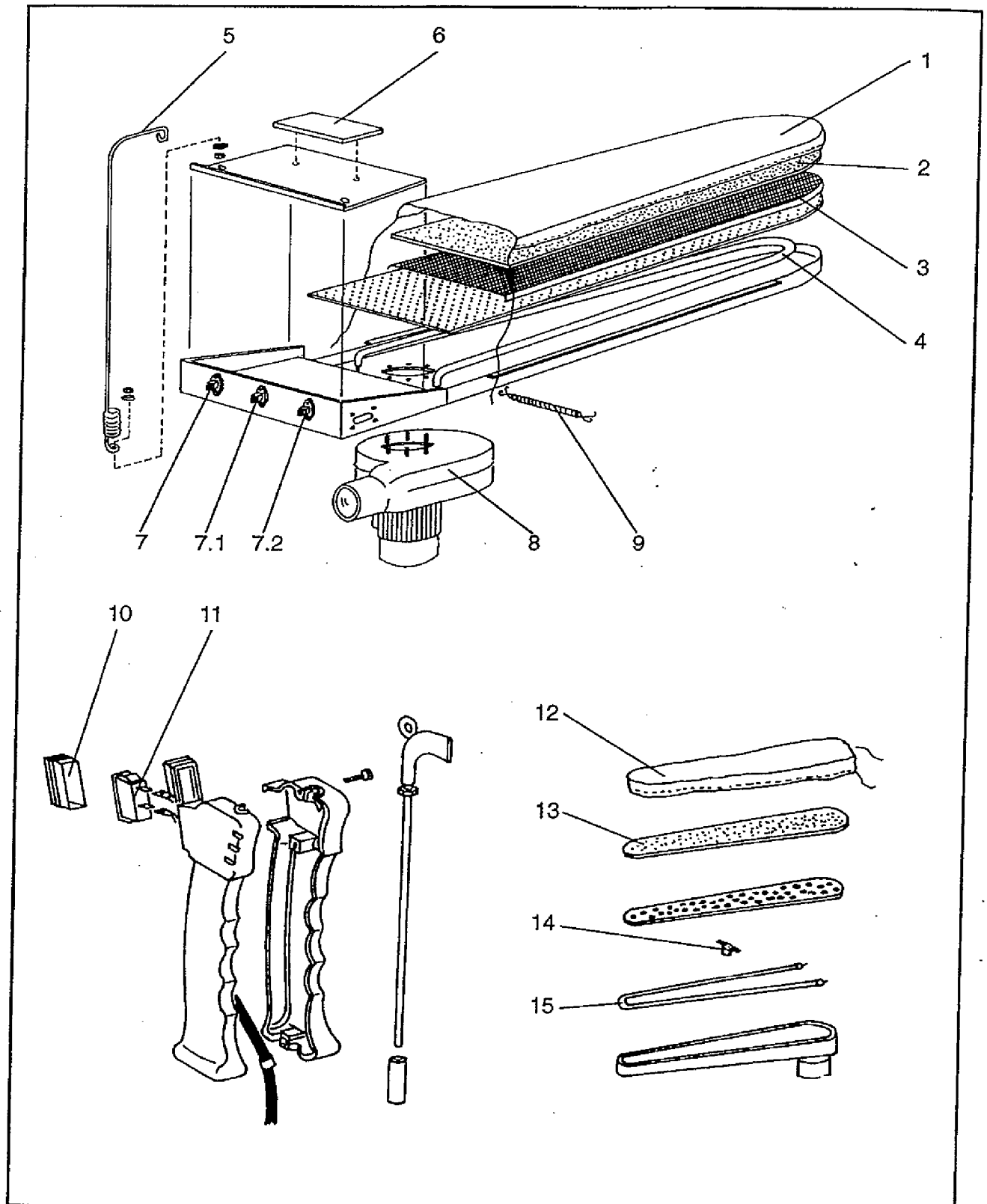




L LISTA COMPONENTI MACCHINA
GB MACHINE COMPONENT LISTE
E LISTE DES COMPOSANTS DE LA MACHINE
D LISTE DER MASCHINENBESTANDTEILE

ALLEGATO
ENCLOSURE
ANNEXE
ANLAGE

A





I			GB		
NR.	DESCRIZIONE	CODICE	NR.	DESCRIPTION	CODICE
1	-COPERTINA PIANO	112.03	1	-BOARD COVER	112.03
2	-MOLLETTONE PIANO	113.02	2	-BOARD FLANNEL	113.02
3	-RETE MERA CLON	112.19	3	-MERA CLON NET	112.19
4	-RESISTENZA PIANO 1000W	124.39	4	-BOARD RESISTANCE 1000W	124.39
5	-ANTENNA TUBO-CAVO FERRO	171.01	5	-AFRIAL FOR IRON WIRE	171.01
6	-APPOGGIA FERRO	107.01	6	-IRON WELL	107.01
7	-CONNETTORE 1° FERRO (AS/2)	132.06	7	-1ST IRON CONNECTOR	132.06
7.1	-CONNETTORE 2° FERRO		7.1	-2ND IRON CONNECTOR	
7.2	-CONNETTORE PISTOLA (optionals)	132.03	7.2	-STEAM GUN CONNECTOR (optional)	132.03
8	-MOTORE ASPIRAZIONE PIANO	108.05	8	-BOARD SUCTION MOTOR	108.05
9	-MOLLA PER TELO	131.01	9	-SPRING FOR CLOTH	131.01
10	-COPRIMICRO	104.01	10	-MICROSWITCH PROTECTION	104.01
11	-MICROINTERRUTTORE PER PISTOLA (aria/aria-vapore)	104.20	11	-GUN MICROSWITCH (air/air-steam)	104.20
12	-COPERTINA BRACCIOLO	112.06	12	-SLEEVE BOARD COVER	112.06
13	-MOLLETTONE BRACCIOLO	113.03	13	-SLEEVE BOARD FLANNEL	113.03
14	-THERMOSTATO RESISTENZA BRACCIOLO 80°C	147.04	14	-SLEEVE BOARD RESISTANCE THERMOSTAT	147.04
15	-RESISTENZA BRACCIOLO 200W	124.42	15	-SLEEVE BOARD RESISTANCE 200W	124.42

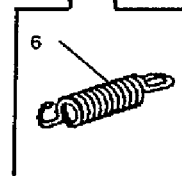
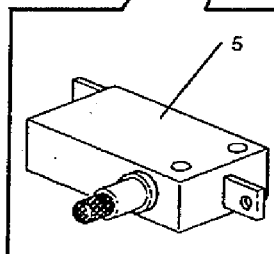
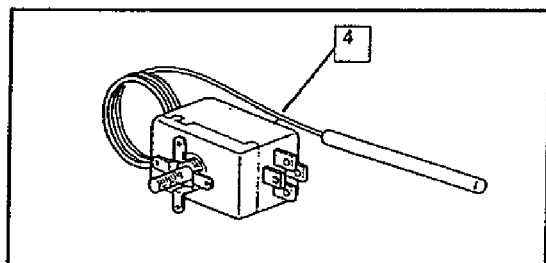
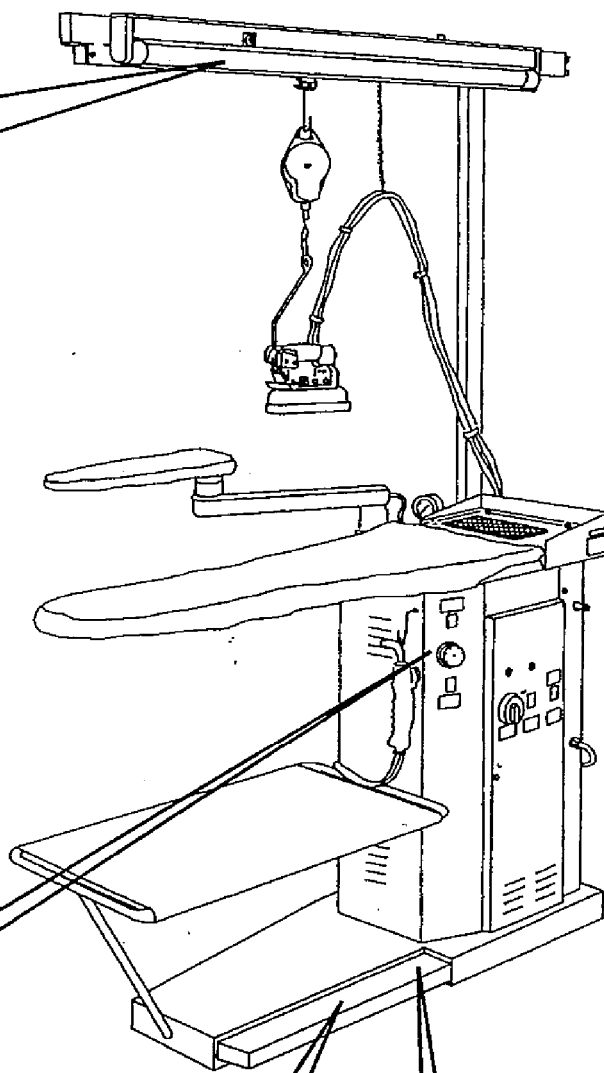
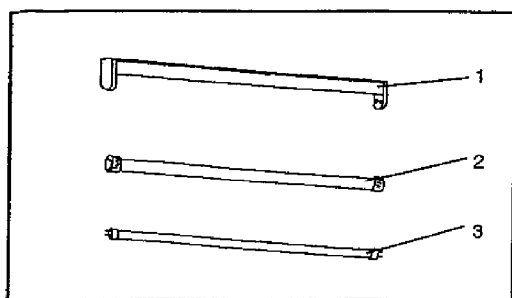
F			D		
NR.	DESCRIPTION	CODE	NR.	BESCHREIBUNG	KODEX
1	-COUVERTURE PLAN	112.03	1	-ARBEITSPLETTEN-BEZUG	112.03
2	-MOLLETTON PLAN	113.02	2	-MOLTON	113.02
3	-FILET MERA CLON	112.19	3	-NETZ MERA CLON	112.19
4	-RESISTANCE PLAN 1000W	124.39	4	-ARBEITSPLETTEN WIDERSTAND 1000W	124.39
5	-ANTENNE TUYAU-CBLE ELECTRIQUE FER	171.01	5	-ANTENNE	171.01
6	-APPUIE-FER	107.01	6	-BUGELEISENSTANDER	107.01
7	-CONNECTEUR 1ERE FER	132.06	7	-KONNECTOR FUR BUGELEISEN N°1	132.06
7.1	-CONNECTEUR 2EME FER		7.1	-KONNECTOR FUR BUGELEISEN N°2	
7.2	-CONNECTEUR PISTOLET AIR-AIR/VAPEUR	132.03	7.2	-KONNECTOR FUR DAMPFPISTOLE (optional)	132.03
8	-MOTEUR ASPIRATION PLAN	108.05	8	-SAUGEND MOTOR	108.05
9	-RESSORT POUR TOILE	131.01	9	-FEDER MIT GITTERBLECH	131.01
10	-PROTECTION MICROINTERRUPTEUR	104.01	10	-MIKROSCHALTER SHUTZ	104.01
11	-MIKROINTERRUPTEUR	104.20	11	-MIKROSHALTER	104.20
12	-COUVERTURE ACCOUDOIR MANCHES	112.06	12	-DAS DECKEL FUR DIE ARMLEHNE+REIBUER- SCHLUB	112.06
13	-MOLLETTON ACCOUDOIR MANCHES	113.03	13	-DAS MOLL FUR ARM	113.03
14	-THERMOSTAT RESISTANCE ACCOUDOIR MANCHES 80°C	147.04	14	-DER THERMOSTAT FUR ARMWIDERSTAND	147.04
15	-RESISTANCE ACCOUDOIR MANCHES 200W	124.42	15	-ARMWIDERSTAND 200W	124.42



L LISTA COMPONENTI ELETTRICI
GB ELECTRIC COMPONENT LISTE
E LISTE DE COMPOSANT ELECTRIQUE
D LISTE DER ELEKTRISCHEN BESTANDTEILE

ALLEGATO
ENCLOSURE
ANNEXE
ANLAGE

B





I			GB		
NR.	DESCRIZIONE	CODICE	NR.	DESCRIPTION	CODICE
1	-PLAFONIERA	151.40	1	-CEILING LAMP	151.40
2	-TUBO DI PROTEZIONE	151.18	2	-PROTECTION TUBE	151.18
3	-TUBO AL NEON	151.17	3	-NEON	151.17
4	-THERMOSTATO PIANO 120°C	147.02	4	-BOARD THERMOSTAT 120°C	147.02
5	-MICROINTERRUPTORE PEDALE	104.11	5	-PEDAL MICROSWITCH	104.11
6	-MOLLA PEDALE	131.02	6	-PEDAL SPRING	131.02

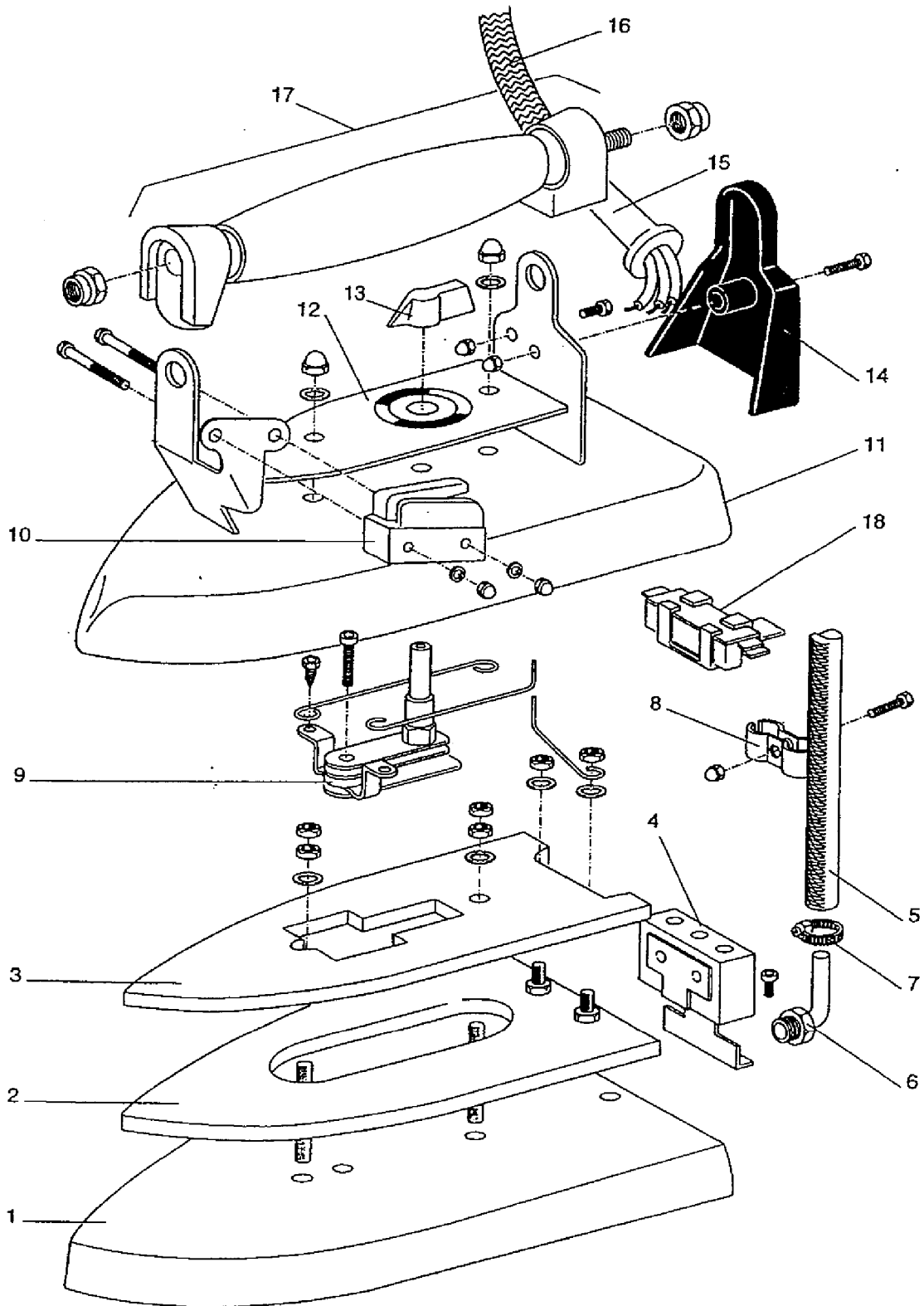
F			D		
NR.	DESCRIPTION	CODE	NR.	BESCHREIBUNG	KODEX
1	-PLAFONNIER	151.40	1	-DEKKENLAMPE	151.40
2	-TUYAU DE PROTECTION	151.18	2	-ROHRE FUR SCHUTZ	151.18
3	-NEON	151.17	3	-NEONBELEUCHTUNG	151.17
4	-THERMOSTAT 120°C DU PLAN	147.02	4	-THERMOSTAT 120°C	147.02
5	-MICROINTERRUPTEUR POUR PEDALE	104.11	5	-PEDAL MIKROSHALTER	104.11
6	-RESSORT PEDAL	131.02	6	-FEDER PEDAL	131.02



L LISTA COMPONENTI FERRO DA STIRO
GB IRON COMPONENT LISTE
F LISTE DES COMPOSANTS FER A REPASSER
D LISTE DER BUGELEISENBESTANDTEILE

ALLEGATO
ENCLOSURE
ANNEXE
ANLAGE

C





L LISTA COMPONENTI FERRO DA STIRO
 GB IRON COMPONENT LIST
 E LISTE DES COMPOSANTS FER AREPASSER
 D LISTE DER BUGELEISENBESTANDTEILE

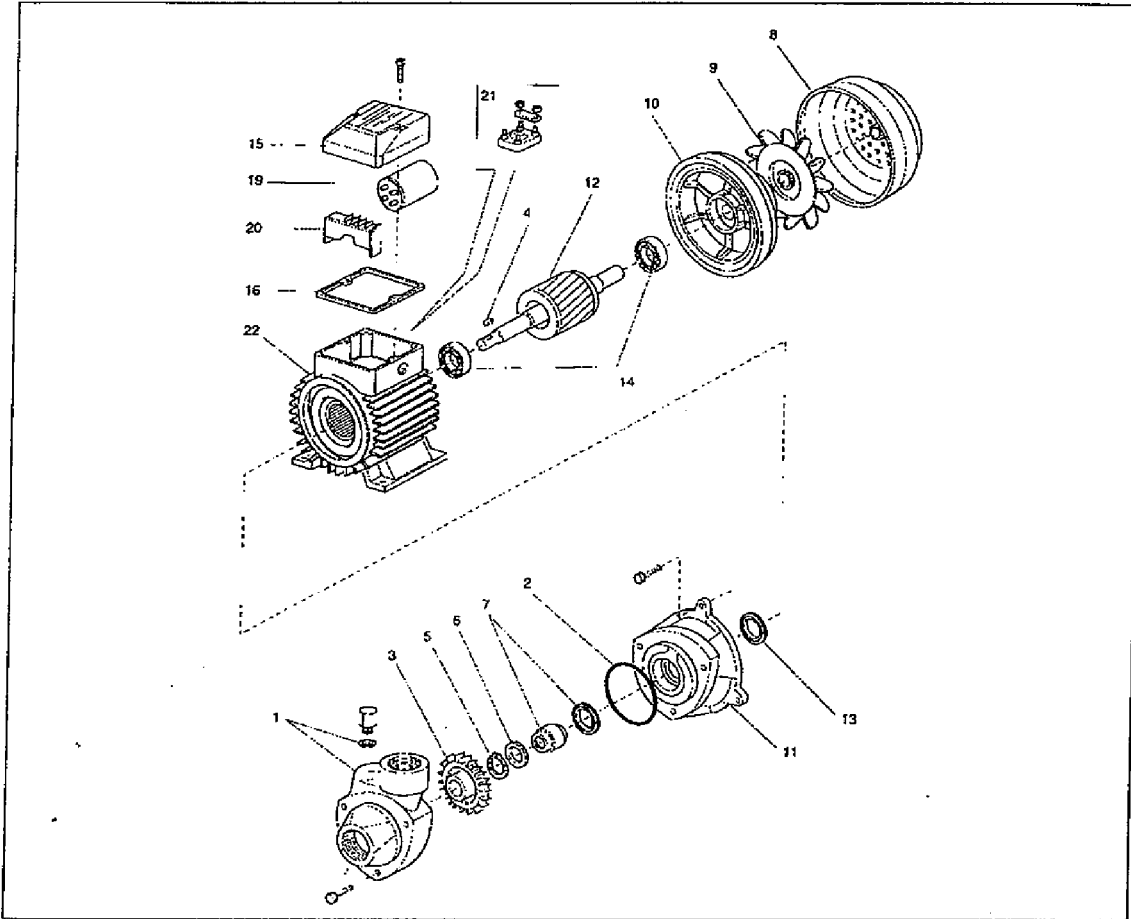
ALLEGATO
 ENCLOSURE
 ANNEXE
 ANLAGE

C

N°.	DESCRIZIONE	DESCRIPTION	DESCRIPTION	BESCHREIBUNG	CODICE CODE CODE KODEX
1	PIASTRA RADIANTE FERRO 2F	RADIANT PLATE 2F IRON	PLAQUE RADIANTE FER 2F	HEIZPLATTE BUGELEISEN 2F	107.10
	PIASTRA RADIANTE FERRO JOLLY	RADIANTE PLATE JOLLY IRON	PLAQUE RADIANTE FER JOLLY	HEIZPLATTE BUGELEISEN JOLLY	107.31
	PIASTRA RADIANTE FERRO VR GRANDE	RADIANTE PLATE VR G. IRON	PLAQUE RADIANTE FER VR G.	HEIZPLATTE BUGELEISEN VR G.	107.34
	PIASTRA RADIANTE VR PICCOLO (COCCHI)	RADIANTE PLATE COCCHI IRON	PLAQUE RADIANTE FER COCCHI	HEIZPLATTE BUGELEISEN COCCHI	107.35
2	RESISTENZA CORAZZATA	PROTECTED RESISTANCE	RESISTANCE CUIRASSEE	GEPANZERTER WIDERSTAND	124.43
3	ZAVORRA	BALLAST	LEST	BALLAST	107.30
4	MORSETTIERA	TERMINAL BOARD	TABEAU DE BORNES	KLEMMKASTEN	107.02
5	TUBO VAPORE	STEAM PIPE	TUYAU VAPEUR	DAMPFSCHLAUCH	107.22 (3,10 MT) 107.25 (MT) 107.26 (2,20 MT)
6	RACCORDO TUBO VAPORE	STEAM PIPE FITTING	RACCORD TUYAU VAPEUR	DAMPFSCHLAUCHVERBINDUNG	107.20
7	FASCIETTA TUBO VAPORE	STEAM PIPE CLAMP	COLLIER FIXAGE TUYAU VAPEUR	DAMPFSCHLAUCHSCHELLE	121.01
8	FASCIETTA DOPPIA	DOUBLE CLAMP	COLLIER DOUBLE	DAMPFSCHLAUCHDOPPELSHELLE	107.21
9	TERMOSTATO	THERMOSTAT	THERMOSTAT	THERMOSTAT	147.06
10	MICROINTERRUTTORE	MICROSWITCH	MICROINTERRUPTEUR	MIKROSCHALTER	104.04
11	CALOTTINA	COVER	PETITE CALOTTE	KALOTTE	/
12	MOSTRINA RAPPRESENTAZIONE TEMPERATURA FERRO	IRON TEMPERATURE INDICATOR PLATE	PLAQUE AVEC REPRESENTATION TEMPERATURE FER	ANZEIGER FUR BUGELEISENTEMPERATUR	/
13	INDICATORE TEMPERATURA TERMOSTATO	THERMOSTAT TEMPERATURE INDICATOR	INDICATEUR TEMPERATURE THERMOSTAT	THERMOSTAT TEMPERATURDREHREGLER	/
14	PROTEZIONE MORSETTIERA	TERMINAL BOARD PROTECTION	PROTECTION TABLEAU DE BORNES	KLEMMKASTEN-SCHUTZ	/
15	CORDONE ELETTRICO FERRO	IRON TWISTED PAIR	CORDON ELECTRIQUE FER	BUGELEISEN-STROMKABEL	/
16	CORDONA ELETTRICO CALZATO	SHEATED TWISTED PAIR	CORDON ELECTRIQUE RECOUVERT	UMKLOPPELTES BUGELEISEN-STROMKABEL	107.27 (MT) 107.28 (2,20 MT) 107.32 (3,10 MT)
17	IMPUGNATURA IN SUGHERO	CORK HANDLE	POIGNEE EN LIEGE	KORKHANDGRIFF	107.42
18	TERMOFUSIBILE TY80/A	THERMOFUSE TY80/A	FUSIBLE THERMIQUE TY80/A	THERMOSICHERUNG	107.29



-ELETTROPOMPA TRIFASE (COD.103.16) -POMPE TRIFASE (COD.103.16)
 -THREEPHASE PUMP (COD.103.16) -DREITAKPUMPE (COD.103.16)



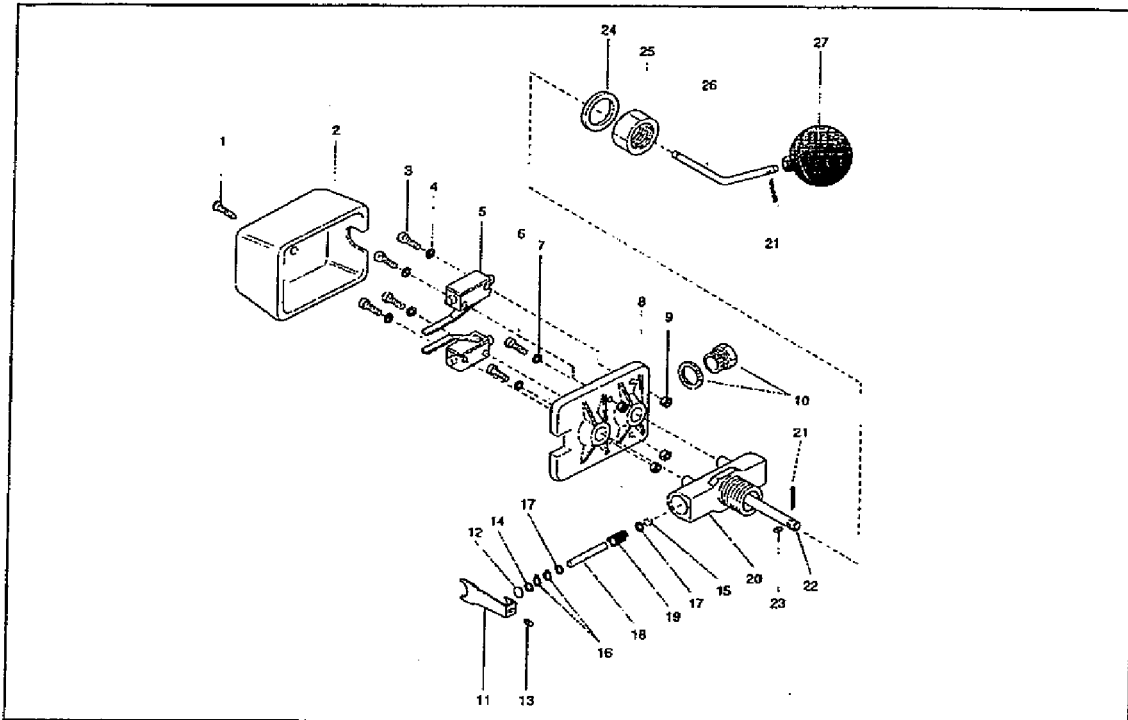
N°	DENOMINAZIONE DENOMINATION DENOMINATION BENENNUNG	CODICE CODE CODE KODEX	N°	DENOMINAZIONE DENOMINATION DENOMINATION BENENNUNG	CODICE CODE CODE KODEX
1	-CORPO POMPA -PUMP BODY		12	-ALBERO CON ROTORE -SHAFT WITH ROTOR	
2	-GUARNIZIONE OR -GASKET		13	-PARASPRUZZI -SPASH WASHER	
3	-GIRANTE -IMPELLER		14	-CUSCINETTO A SFERA -BALL BEARING	
4	-CHIAVELLA INOX -KEY-SHAFT		15	-COPRIMORSETTIERA -TERMINAL BOX COVER	
5	-ANELLO SEEGER -SEGER		16	-GUARNIZIONE -GASKET	
6	-RONDELLA -WASHER		17	-GOMMINO PRESSACAVO -CABLE GROMMET	
7	-TENUTA MECCANICA -MECHANICAL SEAT		18	-PRESSACAVO -CABLE PRESS	
8	-COPRIVENTOLA -FAN COVER		19	-CONDENSATORE -CONDENSER	
9	-VENTOLA -FAN		20	-MORSETTIERA SPECIALE -SPECIAL TERMINAL BOX	
10	-SCUDO -MOTOR COVER		21	-MORSETTIERA -CONTROL TERMINAL	
11	-LANTERNA -MOTOR BRACKET		22	-CASSA CON STATORE -MOTOR CASE WITH STATOR	
				-ROTOR AVEC ARBRE -WELLE MIT ROTOR	
				-DEFLECTEUR -SPRITZSCHUTZ	
				-ROULEMENT A BOULLES -KUGELLAGER	
				-COUVERCLE DE BOILLER -KLEMMKASTEN-ABDECKUNG	
				-GARNITURE -DICHTUNG	
				-PRESSE CABLE -KABELSCHELLE-GUMMRING	
				-PRESSE-ETOUIPE -KABELSCHELLE	
				-CONDENSATEUR -KONDENSATOR	
				-PLANCHETTE A BORNEX SPECIALE -KOMMANDOKLEMMBRETT	
				-TABLEAU DE BORNES -SPEZIALKLEMMKASTEN	
				-CARCASSE AVEC STATOR -GEHAUSE MIT MAGNETRAHMEN	



L LISTA COMPONENTI REGOLATORE DI LIVELLO
GB LEVEL REGULATOR COMPONENT LIST
E LISTE DES COMPOSANTS REGULATEUR DE NIVEAU
D BESTANDTEILLISTE NIVEAUREGULIERER

ALLEGATO
ENCLOSURE
ANNEXE
ANLAGE

E



N°	DENOMINAZIONE DENOMINATION DENOMINATION BENENNUNG	CODICE CODE CODE KODEX	N°	DENOMINAZIONE DENOMINATION DENOMINATION BENENNUNG	CODICE CODE CODE KODEX
1	-VITE AUTOFILETTANTE -SELF-TAPPING SCREW -V. AUTOFARAUDEUSE -SELBSTSCHNEIDENDE SCHRAUBE		15	-CONO TEFLON -TEFLON CONE -CONE EN TEFLON -TEFLONKEGEL	
2	-COPERCHIO -COVER -CALOTTE -ABDECKHULSE		16	-ANELLO SEEGER INOX -SEEGER RING INOX -BAGUE SEEGER EN ACIER INOX -SEEGERRING AUS ROSTFREIEM STAHL	
3	-VITE TC -SCREW -VIS -SCHRAUBE		17	-RONDELLA OTTONE -BRASS WASHER -RONDELLE EN LAITON -MESSINGSCHIEBE	
4	-RONDELLA GROOVER -GROOVER WASHER -RONDELLE GROOVER -GROOVERSCHEIBE		18	-PERNO INOX -INOX PIVOT -PIVOT EN ACIER INOX -BOLZEN AUS ROSTFREIEM STAHL	
5	-MICROINTERRUPTORE -MICRO SWITCH -MICRO-INTERRUPTEUR -MIKROSCHALTER	104.17 * 109.27 **	19	-MOLLA INOX -INOX SPRING -RESORT EN ACIER INOX -FEDER AUS ROSTFREIEM STAHL	
6	-VITE BRUGOLA -HEXAGONAL-GAINED SCREW -VIS ATETE CREUSE A SIX PANS -INNENSECHSKANTSCHRAUBE		20	-CORPO -BODY -CORPS -KORPER	
7	-RONDELLA GROOVER -GROOVER WASHER -RONDELLE GROOVER -GROOVERSCHEIBE		21	-COPPKLIA INOX -INOX PIN -GOUILLE EN ACIER INOX -SPINTL AUS ROSTFREIEM STAHL	
8	-BASE -PLATE -BASE -GRUNDPLANE		22	-TUBO GUIDA ASTA -STEAM HOUSING -LOGEMENT DE LA TIGE -SPINDELLUHRUNG	
9	-DADO -LOCKNUT -ECROU -MUTTER		23	-GRANO -GRAIN -VIS SANS TETE -BUCHSE	
10	-PASSACAVO -CORE HITCH -PASSAGE DU CABLE -VERSCHRAUBUNG MIT ZUGENTLASTUNG		24	-GUARNIZIONE -GASKER -GARNITURE -DICHLUNG	
11	-BRACCIO -OVERARM -BRAS -SCHALTARM		25	-DADO -LOCKNUT -ECROU -MUTTER	
12	-TAPPO -PLUG -TAMPON -BUCHSE		26	-ASTA PIEGATA -FOLDEN ROD -TIGE COURVE -SCHATTHEBEL	109.05
13	-GRANO -GRAIN -VIS SANS TETE -STIFT		27	-ASM SFERA GALLEGGIANTE -ASM FLOATING BALL -ASM BILLE SURNAGEANT -ASM SCHWIMMERKUGEL	109.03
14	-RONDELLA TEFLON -TEFLON WASHER -RONDELLE EN TEFLON -TEFLON SCHEIBE				

** modello con ampolla (109.02)
 ** model with mercure (109.02)
 ** modelle avec mercure ampoule (109.02)
 ** modell mit mercure ampulle (109.02)

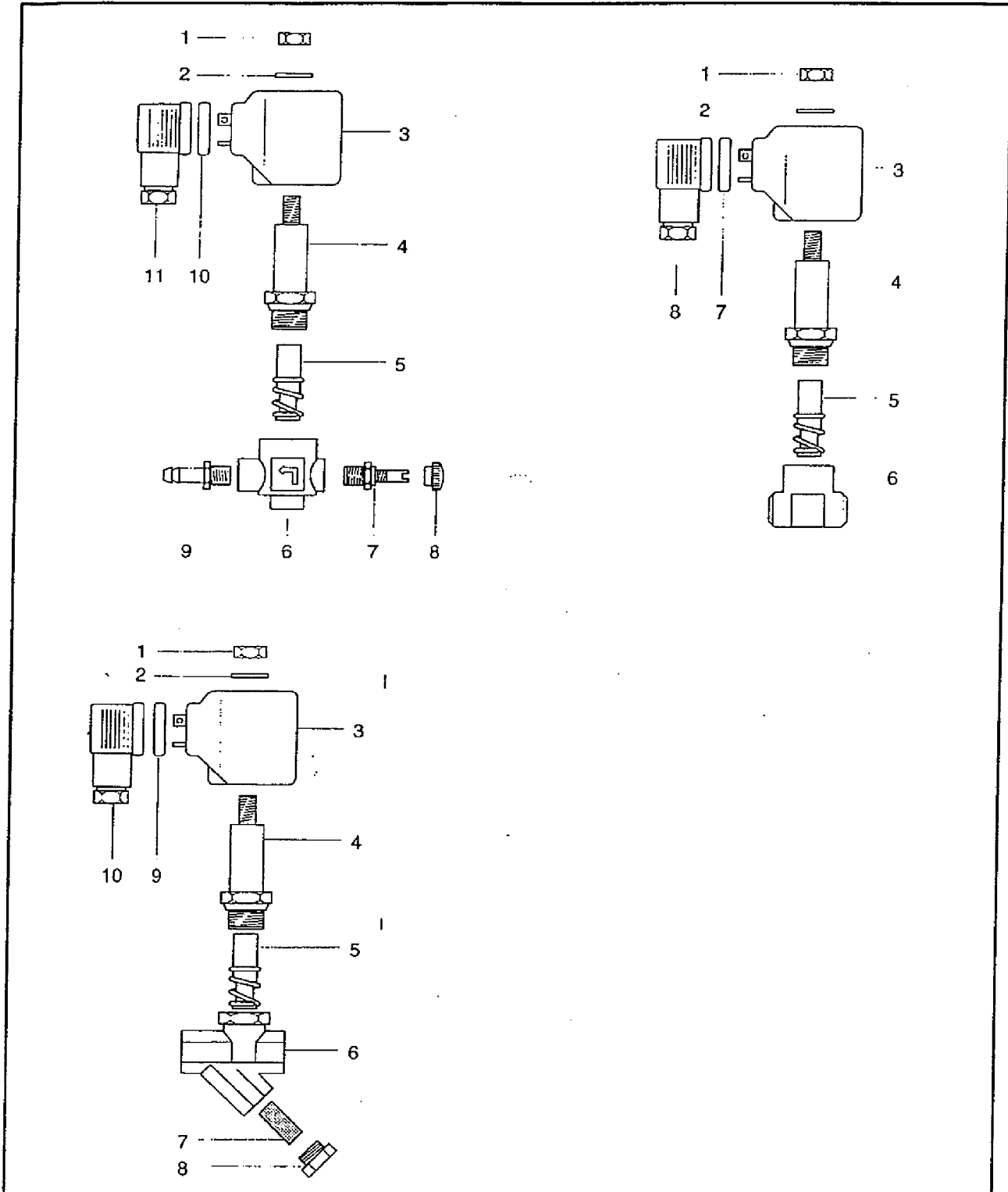
* modello con microinterruttore (109.01)
 * model with microswitch (109.01)
 * modelle avec microinterrupteur (109.01)
 * modell mit microshalter (109.01)



L LISTA COMPONENTI ELETTROVALVOLE
GB SOLENOID VALVE COMPONENT LIST
E LISTE DES COMPOSANTS ELECTROVANNE
D LISTE DER MAGNETVENTIL BESTANDTEILE

ALLEGATO
ENCLOSURE
ANNEXE
ANLAGE

F





I
GB
E
D

LISTA COMPONENTI ELETTRICI
ELECTRIC COMPONENT LIST
LISTE DES COMPOSANTS ELECTRIQUES
LISTE DER ELEKTRISCHEN BESTANDTEILE

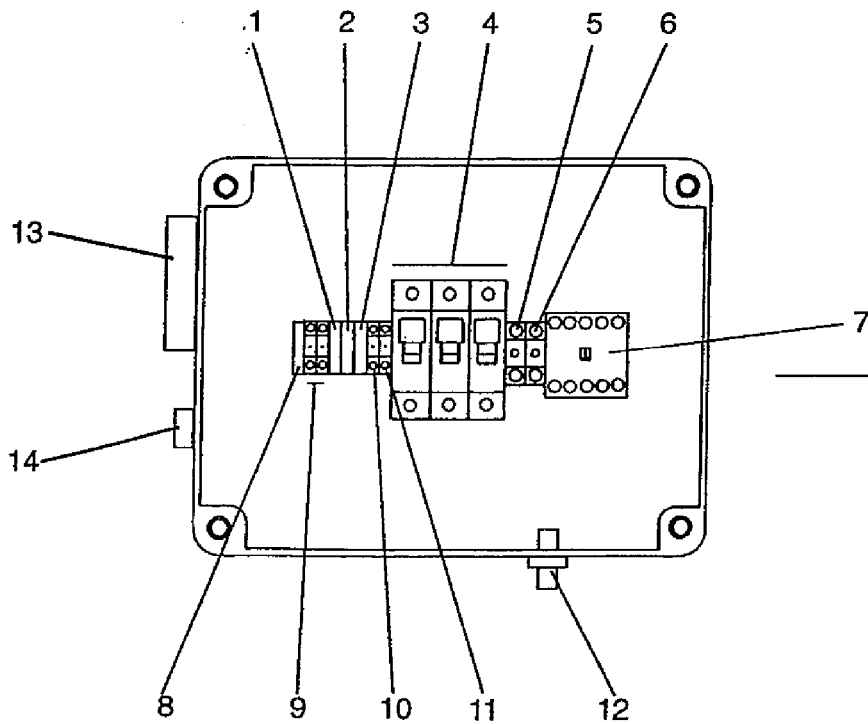
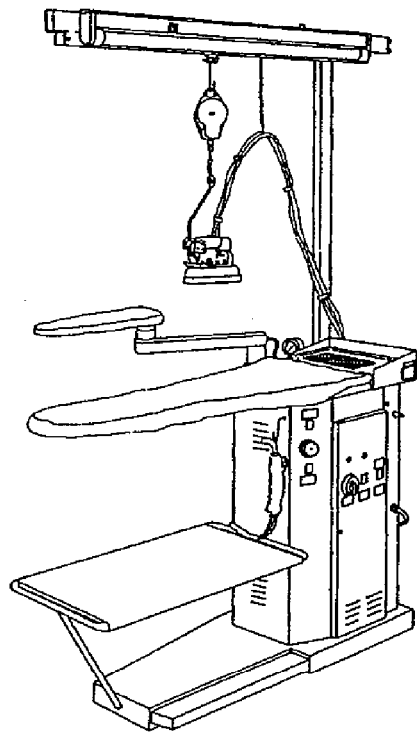
ALLEGATO
ENCLOSURE
ANNEXE
ANLAGE

F

A	Elettrovalvola vapore 1/4	Steam solenoid valve 1/4"	Electrovanne vapeur 1/4"	Dampfmagnetventil 1/4	110.10
1	Dado	Lock nut	Ecrou	Mutter	
2	Rondella	Washer	Rondelle	Scheibe	
3	Bobina 220V	Magnetic unit 220V	Bobine 220V	M.Spule 220V	110.03
	Bobina 24V	Magnetic unit 24V	Bobine 24V	M.Spule 24V	110.01
4	Canotto	Tube guide	Tube	Plungerrohr	110.30
5	Nucleo EPDM	Core EPDM	Noyeu EPDM	Anker EPDM	110.34
	Nucleo TEFLON	Core TEFLON	Noyeu TEFLON	Anker TEFLON	110.35
6	Corpo	Body	Corp	Korper	
7	Guarnizione	Gasket	Joint torique	Dichtung	
8	Connettore	Connector	Connecteur	Verbindung	110.08
B	Elettrovalvola vap.+reg. 1/4	Solenoid valve steam+reg. 1/4"	Electrovanne vapeur+reg. 1/4"	Magnetventil Dampf + reg. 1/4"	
1	Dado	Lock nut	Ecrou	Mutter	
2	Rondella	Washer	Rondelle	Scheibe	
3	Bobina 220V	Bobine 220 V	Magnetic unit 220V	M.Spule 220V	110.03
	Bobina 24V	Magnetic unit 24V	Bobine 24V	M.Spule 24V	110.01
4	Canotto	Tube guide	Tube	Rohr	110.30
5	Nucleo EPDM	Core EPDM	Noyeu EPDM	Anker EPDM	110.34
	Nucleo teflon	Core TEFLON	Noyeu TEFLON	Anker TEFLON	110.35
6	Corpo	Body	Corps	Korper	
7	Guarnizione	Gasket	Joint tonque	Dichtung	
8	Connettore	Connector	Connecteur	Verbindung	110.08
9	Porta tubo	Pipe holder	Porte-tuyau	Rohrhalter	
10	Corpo	Body	Corps	Korper	
11	Rzgolatore	Regulator	Regulateur	Regler	110.28
12	Manopola	Handle	Bouton	Reglerknopf	110.15
C	Elettrovalvola acqua+filtro 3/8	Solenoid valve water+filter 3/8	Electrovanne eau+filtre 3/8	Magnetventil Wasser+filter 3/8	
1	Dado	Lock nut	Ecrou	Mutter	
2	Guarnizione	Washer	Rondelle	Scheibe	
3	Bobina 220V	Magnetic unit 220V	Bobine 220V	M.Spule 220V	110.03
	Bobina 24V	Magnetic unit 24V	Bobine 24V	M.Spule 24V	110.01
4	Canotto	Tube guide	Tube	Rohr	110.30
5	Nucleo EPDM	Core EPDM	Noyeu EPDM	Anker EPDM	110.34
	Nucleo TEFLON	Core TEFLON	Noyeu TEFLON	Anker TEFLON	110.35
6	Corpo	Body	Corps	Korper	
7	Guarnizione	Gasket	Joint torique	Dichtung	
8	Connettore	Connector	Connecteur	Verbindung	110.08
9	Portatubo	Pipe holder	Porte -tuyau	Rohrhalter	
10	Corpo	Body	Corps	Korper	
11	Regolatore	Regulator	Regulateur	Regler	110.28
12	Manopola	Handle	Bouton	Reglerknopf	110.15
13	Corpo	Body	Corps	Korper	
14	Filtro	Filter	Filtre	Filter	
15	Tappo 3/8	Lock nut 3/8	Bouchon 3/8	Verschlub 3/8	
A	110.10 CEME	110.19 SATURMAGNETIC			
B	110.05 CEME	110.04 SATURNMAGNETIC			
C	110.06 SATURMAGNETIC				



ASP/1





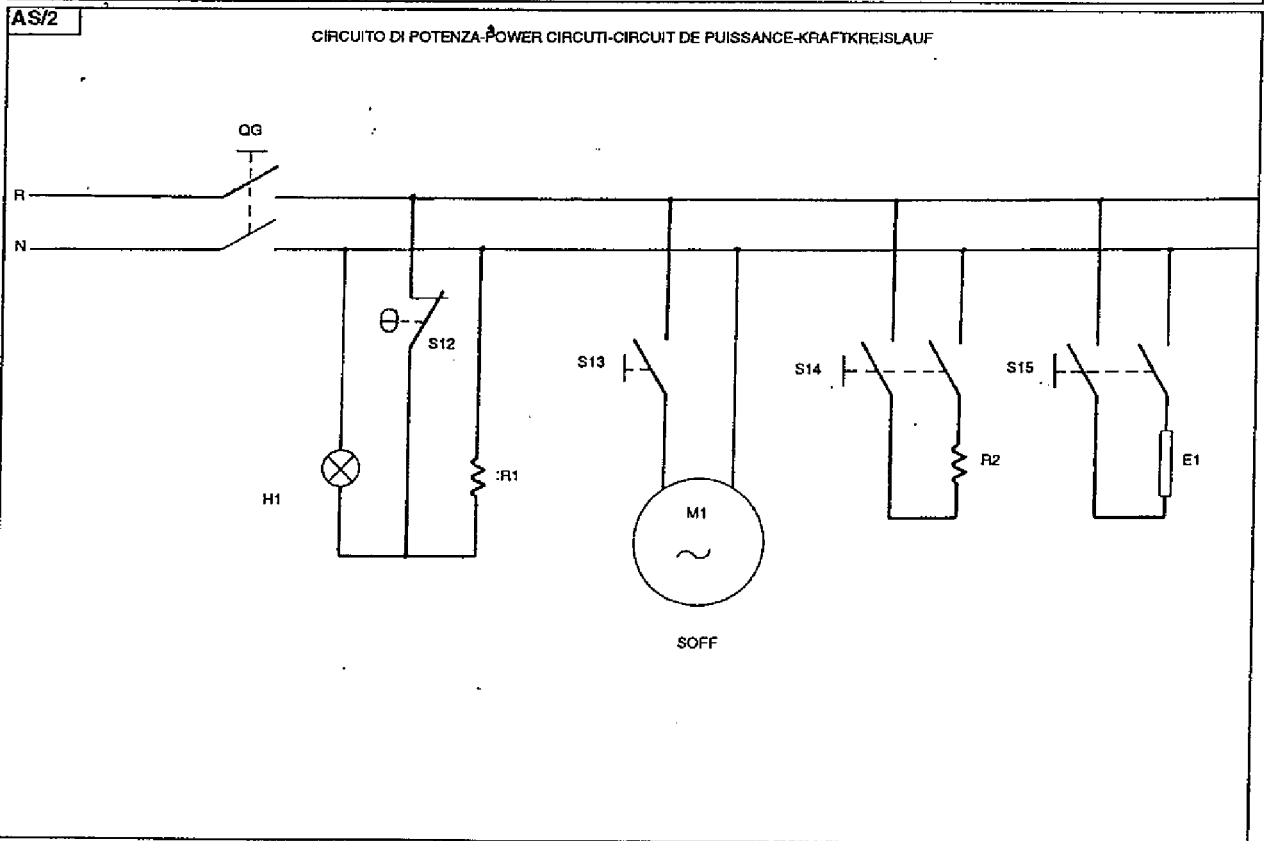
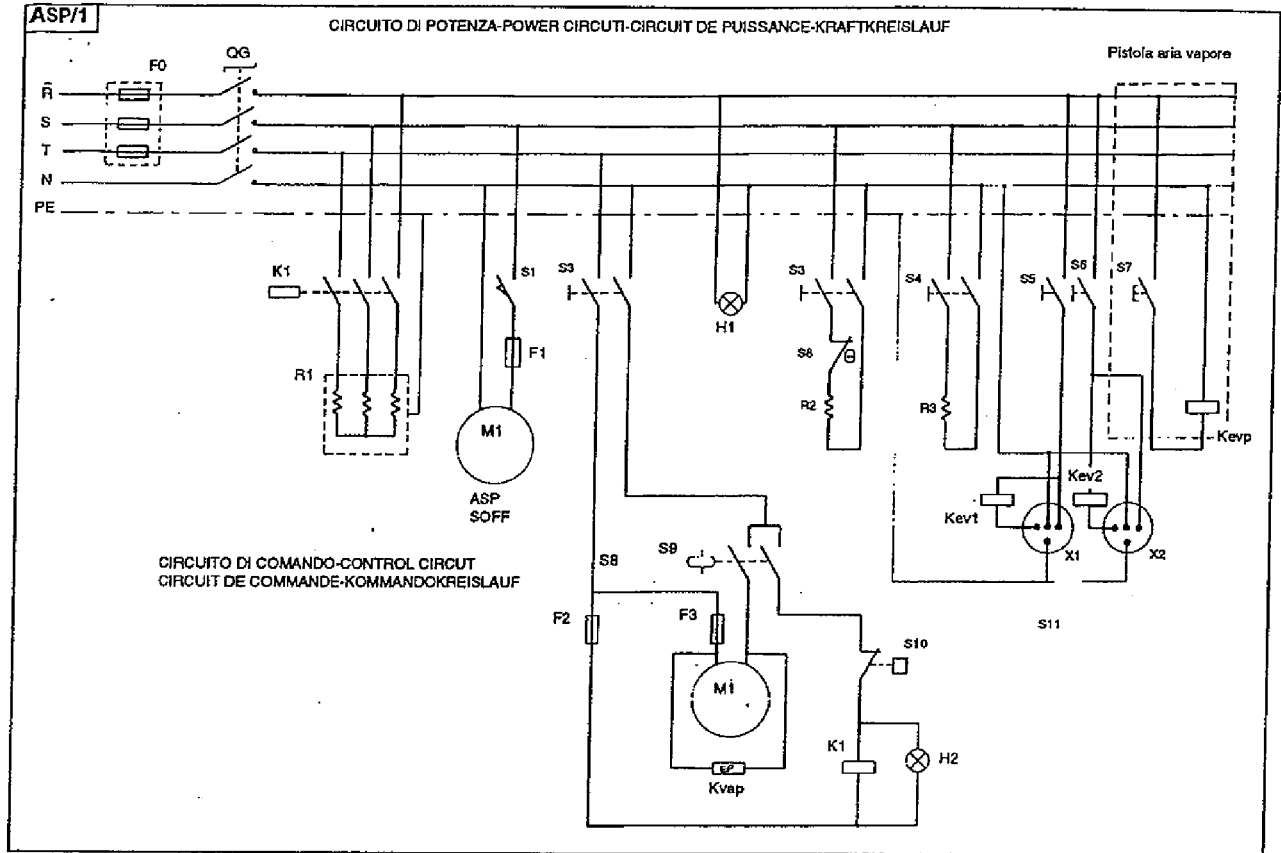
Nr.	DESCRIZIONE DESCRIPTION	DESCRIPTION BESCHREIBUNG	CODICE CODE CODE KODEX
1	FUSIBILE DI PROTEZIONE MOTORE (3A) MOTOR PROTECTION FUSE (3A)	FUSIBLE DE PROTECTION MOTEUR STEUERSCHTZ-MOTOR	137.10
2	FUSIBILE DI PROTEZIONE POMPA (3A) POMP PROTECTION FUSE (3A)	FUSIBLE DE PROTECTION POMPE (3A) STEUERSCHTZ-PUMPE (3A)	137.10
3	FUSIBILE DI PROTEZIONE COMANDO (1A) CONTROL PROTECTION FUSE (1A)	FUSIBLE DE PROTECTION COMMANDE (1A) STEUERSCHTZ-SICHERUNG (1A)	137.11
4	PORTAFUSIBILI TRIPOLARE THREE-POLE FUSE CARRIER	PORTE-FUSIBLE TRIPOLAIRE DREIPOLIGER SICHERUNGSKORPER	137.02
5	MORSETTO NEUTRO NEUTRAL BOARD	BORNE NEUTRE NEUTRALE KLEMME	151.10
6	MORSETTO DI TERRA EARTH TERMINAL	BORNE A TERRE ERDKLEMME	151.12
7	TELERRUTTORE RESISTENZA CALDAIA BOILER RESISTANCE REMOTE CONTROL SWITCH	TELERUPTEUR RESISTANCE CHAUDIERE FERNSHALTER DAMPFKESSEL-WIDERSTAND	128.01
8	MORSETTO DI TERRA EARTH TERMINAL	BORNE A TERRE ERDKLEMME	151.14
9	MORSETTIERA DI COMANDO CONTROL TERMINAL BOARD	BOITE A BORNES DE COMMANDE STEUERKLEMMBRETT	151.12
10	MORSETTO DI COMANDO CONTROL BOARD	BORNE DE COMMANDE STEUERKLEMMBRETT	151.12
11	MORSETTO NEUTRO NEUTRAL TERMINAL	BORNE NEUTRE NEUTRALE KLEMME	151.12B
12	PASSACAVO FAIRLEAD	PASSE-CABLE KABELDURCHGANG	121.06
13	SPIA TENSIONE TENSION PILOT LIGHT	VOYANT TENSION LUMINEUX VERT GRUNE SPANNUNGS-KONTROLLEUCHTE	104.24
14	INTERRUTTORE GENERALE MAIN SWITCH	INTERRUPTEUR GENERAL HAUPTSCHALTER	104.24



L SCHEMA IMPIANTO ELETTRICO
GB ELECTRIC DIAGRAM
E SCHEMA ELECTRIQUE
D SCHEMA DER ELEKTRISCHEN ANLAGE

ALLEGATO
ENCLOSURE
ANNEXE
ANLAGE

H





NR.	DESCRIZIONE	CODICE	NR.	DESCRIPTION	CODICE
R-S-T	-LINEE FASI	/	R-S-T	-PHASES LINE	/
N	-LINEA NEUTRA	/	N	-NEUTRAL LINE	/
PE	-PROTEZIONE ELETTRICA	/	PE	-PROTECTION	/
QG	-INTERRUTTORE GENERALE	104.24	QG	-MAIN SWITCH	104.24
F0	-PORTAFUSIBILI TRIPOLARE (**)	137.02	F0	-THREE POLE FUSE CARRIER (**)	137.02
F1	-FUSIBILE DI PROTEZIONE MOTORE ASP (1A)	137.11	F1	-MOTOR PROTECTION FUSE (1A)	137.11
F2	-FUSIBILE DI PROTEZIONE COMANDO (1A) (**)	137.11	F2	-CONTROL PROTECTION FUSE (1A) (**)	137.11
F3	-FUSIBILE PROTEZIONE POMPA (3A) (**)	137.10	F3	-POMPE PROTECTION FUSE (3A) (**)	137.10
H1	-SPIA TENSIONE VERDE (*)	104.06	H1	-TENSION PILOT LIGHT GREEN	104.06
H2	-SPIA CALDAIA VERDE (**)	104.06	H2	-BOILER PILOT LIGHT GREEN (**)	104.06
H3	-SPIA RESISTENZA PIANO (*)	104.06	H3	-BOARD RESISTANCE PILOT LIGHT (*)	104.06
K1	-TELERUTTORE RESISTENZA CALDAIA (**)		K1	-BOILER RESISTANCE REMOTE CONTROL SWITCH **	
Kvap	-ELETTRIVALVOLA ENTRATA ACQUA IN CALDAIA (**)	allegato F	Kvap	-ENTRY WATER BOILER SOLENOID VALVE (**)	enclos. F
Kevp	-ELETTRIVALVOLA VAPORIZZAZIONE PISTOLA(opt.)	allegato F	Kevp	-GUN VAPORIZATION SOLENOID VALVE (optional)	enclos.F
Kev1	-ELETTRIVALVOLA 1° FERRO	allegato F	Kev1	-1ST IRON SOLENOID VALVE	enclos. F
Kev2	-ELETTRIVALVOLA 2° FERRO (optional)	allegato F	Kev2	-2ND IRON SOLENOID VALVE (optional)	enclos. F
R1	-RESISTENZA CALDAIA (**)	allegato M	R1	-BOILER RESISTANCE (**)	enclos.M
M1	-MOTORE MONOFASE	108.05	M1	-ONE-PHASE MOTOR	108.05
R2	-RESISTENZA PIANO	124.39	R2	-BOARD RESISTANCE	124.39
R3	-RESISTENZA BRACCIOLO	124.42	R3	-ARM RESISTANCE	124.42
E1	-NEON ILLUMINAZIONE PIANO	151.17	E1	-BOARD LIGHTING NEON (*)	151.17
S1	-INTERRUTTORE MOTORE ASPIRANTE	104.02	S1	-SUCTION MOTOR SWITCH	104.02
S2	-INTERRUTTORE CALDAIA (**)	104.02	S2	-BOILER SWITCH (**)	104.02
S3	-INTERRUTTORE RESISTENZA PIANO	104.02	S3	- BOARD RESISTANCE SWITCH	104.02
S4	-INTERRUTTORE RESISTENZA BRACCIOLO	104.02	S4	-ARM RESISTANCE SWITCH	104.02
S5	-INTERRUTTORE 1° FERRO	104.02	S5	-1ST IRON SWITCH	104.02
S6	-INTERRUTTORE 2° FERRO (**)	104.02	S6	-2ND IRON SWITCH	104.02
S7	-MICROINTERRUTTORE PISTOLA VAPORE (optional)	104.20	S7	-STEAM GUN MICROSWITCH (optional)	104.20
S8	-THERMOSTATO PIANO 120°C	147.02	S8	-BOARD THERMOSTAT 120°C	147.02
S9	-ELETTROLIVELLO (*)	allegato E	S9	-BOILER LEVEL REGULATOR (**)	enclos. E
S10	-PRESSOSTATO CALDAIA (**)	120.01	S10	-BOILER PRESSURE SWITCH (**)	120.01
S11	-INTERRUTTORE ILLUMINAZIONE PIANO	104.02	S11	-BOARD LIGHTING SWITCH	104.02

(*)-SOLO SU MODELLO AS/2
 (**)-SOLO SUL MODELLO ASP/1

(*)-ONLY ON THE MODEL AS/2
 (**)-ONLY ON THE MODEL ASP/1

NR.	DESCRIPTION	CODE	NR.	BESCHREIBUNG	KODEX
R-S-T	-PHASES	/	R-S-T	-PHASEN	/
N	-LIGNE NEUTRE	/	N	-NEUTRALE LINE	/
PE	-PROTECTION	/	PE	-SCHUTZ	/
QG	-INTERRUPTEUR GENERAL	104.24	QG	-HAUPTSCHALTER	104.24
F0	-PORTE-FUSIBLE TRIPOLAIRE (**)	137.02	F0	-SCHMELZICHERUNG DES KOMMANDOSCHUTZES(**)	137.02
F1	-FUSIBLE DE PROTECTION MATEUR ASPIRANT (1A)	137.11	F1	-DREIPOLIGER MOTORSTRANGER(1A)	137.11
F2	-FUSIBLE DE PROTECTION COMMANDE (1A) (**)	137.11	F2	-DREIPOLIGER SICHERUNGSTRAGER (1A) (**)	137.11
F3	-FUSIBLE DE PROTECTION POMPE (3A) (**)	137.10	F3	-DREIPOLIGER PUMPSTRANGER (3A) (**)	137.10
H1	-VOYANT TENSION LUMINEUX VERT (*)	104.06	H1	-SPANNUNGSSPION GRUNEN SPION	104.06
H2	-TEMOIN CHAUDIERE (**)	104.06	H2	-SPION DAMPFKESSEL (**)	104.06
H3	-TEMOIN RESISTANCE PLAN (*)	104.06	H3	-SPION FLACHE WIDERSTAND (*)	104.06
K1	-TELERUPTEUR RESISTANCE CHAUDIERE (**)		K1	-FERNSCHALTER WIDERSTAND DAMPFKESSEL (**)	
Kvap	-SOUPAPE ELECTRIQUE ENTREE EAU CHAUD. (**)	annexe F	Kvap	-MAGNETVENTIL WASSEREINLAUF FLACHE (**)	annexe F
Kevp	-SOUPAPE ELECTRIQUE VAPORIZATION PISTOL.optio	annexe F	Kevp	-MAGNETVENTIL VERDAMPFUNG PISTOLE (optional)	annexe F
Kev1	-SOUPAPE ELECTRIQUE 1ERE FER	annexe F	Kev1	-MAGNETVENTIL 1°EISEN	annexe F
Kev2	-SOUPAPE ELECTRIQUE 2EME FER (optional)	annexe F	Kev2	-MAGNETVENTIL 2°EISEN (optional)	annexe F
R1	-RESISTANCE CHAUDIERE (**)	annexe M	R1	-WIDERSTAND DAMPFKESSEL	annexe M
M1	-MOTEUR MONOPHASE	108.05	M1	-EINPHASIGER	108.05
R2	-RESISTANCE PLAN	124.39	R2	-FLACHE WIDERSTAND	124.39
R3	-RESISTANCE JEANNETTE	124.42	R3	-WIDERSTAND FUR ARMEL BUGELWANGE	124.42
E1	-NEON ILLUMINATION PLAN	151.17	E1	-ARBEITSPLATTE-NEON BELEUCHTUNG (*)	151.17
S1	-INTERRUPTEUR MOTEUR ASPIRANT	104.02	S1	-SCHALTER FUR ANSAUGMOTOR	104.02
S2	-INTERRUPTEUR CHAUDIERE (**)	104.02	S2	-SCHALTER DAMPFKESSEL (**)	104.02
S3	-INTERRUPTEUR RESISTANCE PLAN	104.02	S3	-SCHALTER FUR FLACHE WIDERSTAND	104.02
S4	-INTERRUPTEUR RESISTANCE JEANNETTE	104.02	S4	-SCHALTER FUR WIDERSTAND ARMEL BUGELWANGE	104.02
S5	-INTERRUPTEUR 1ere Fer	104.02	S5	-SCHALTER FUR 1° BUGELEISEN	104.02
S6	-INTERRUPTEUR 2eme FER	104.02	S6	-SCHALTER FUR 2° BUGELEISEN	104.02
S7	-MICROINTERRUPTEUR PISTOLET VAPEUR	104.20	S7	-MIKROSCHALTER FUR DAMPF PISTOLE (optional)	104.20
S8	-THERMOSTAT PLAN 120°C	147.02	S8	-FLACHE THERMOSTAT 120°C	147.02
S9	-REGLEUR NIVEAU CHAUDIERE (**)	annexe E	S9	-REGULIEREN NIVEAU DAMPFKESSEL (**)	annexe E
S10	-PRESSOSTAT CHAUDIERE (**)	120.01	S10	-DRUCKWACHTER DAMPFKESSEL (**)	120.01
S11	-INTERRUPTEUR ILLUMINATION PLAN	104.02	S11	-SCHALTER FUR ARBEITSPLATTEN-BELEUCHTUNG	104.02

(*)-SEUL SUR LE MODEL AS/2
 (**)-SEUL SUR LE MODEL ASP/1

(*)-NUR FUR MODELL AS/2
 (**)-NUR FUR MODELL ASP/1



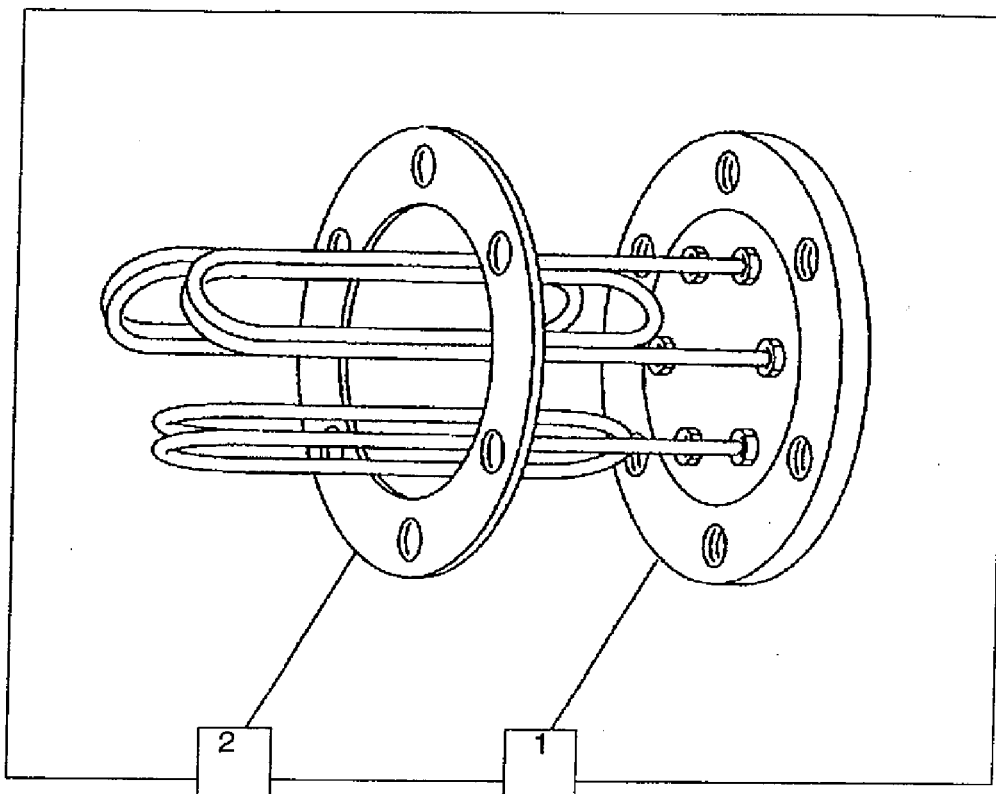
L SCHEMA IDRAULICO
GB HYDRAULIC DIAGRAM
F SCHEMA INSTALLATION HYDRAULIC
D HYDRAULISCHES SCHEMA

ALLEGATO
 ENCLOSURE
 ANNEXE
 ANLAGE

I

I			GB		
NR.	DESCRIZIONE	CODICE	NR.	DESCRIPTION	CODICE
1	-MANOMETRO PRESSIONE CALDAIA	119.01	1	-STEAM PRESSURE GAUGE (0-6bar)	119.01
2	-VALVOLA DI SICUREZZA (TAR.5 bar)	127.11	2	-SAFETY VALVE (tar.5bar)	127.11
3	-FASCIETTA METALLICA (dm.16-25)	121.01	3	-CLIP (16-25)	121.01
4	-TUBO SCARICO VALVOLA DI SICUREZZA	127.08	4	-SAFETY VALVE PIPE	127.08
5	-ISOLANTE CALDAIA (5ft)	401.08	5	-BOILER COVER (5ft)	401.08
	(7ft)	401.07		(7ft)	401.07
6	-VALVOLA DI RITEGNO 3/8	127.02	6	-NON RETURN VALVE 3/8	127.02
7	-ELETTROPOMPA	103.17	7	-PUMP	103.17
8	-ELETTROVALVOLA CON FILTRO 3/8	110.06	8	-SOLENOID VALVE WITH FILTER 3/8	110.06
9	-RUBINETTO SCARICO CALDAIA 3/8	102.03	9	-BALL VALVE FOR BOILER DRAIN	102.03
10	-RESISTENZA CALDAIA	allegato H	10	-BOILER RESISTANCE	allegato H
11	-GUARNIZIONE RESISTENZA	125.09	11	-RESISTANCE GASKET (dm.129)	125.09
12	-COPERCHIO RESISTENZA (dm.125)	124.36	12	-RESISTANCE COVER (dm.125)	124.36
13	-ELETTROLIVELLO (mercurio)	109.01	13	-ELECTRIC LEVEL (mercurio)	109.01
14	(cel)	109.02		(cel)	109.02
15	-PRESSOSTATO CALDAIA	120.01	14	-ELECTRIC LEVEL GASKET (dm.129)	125.09
16	-ELETTROVALVOLA CON REGOLAZIONE PER FERRO	110.04	15	-BOILER PRESSURE SWITCH	120.01
		110.05	16	-SOLENOID VALVE STEAM WITH REGULATION	110.04
					110.05

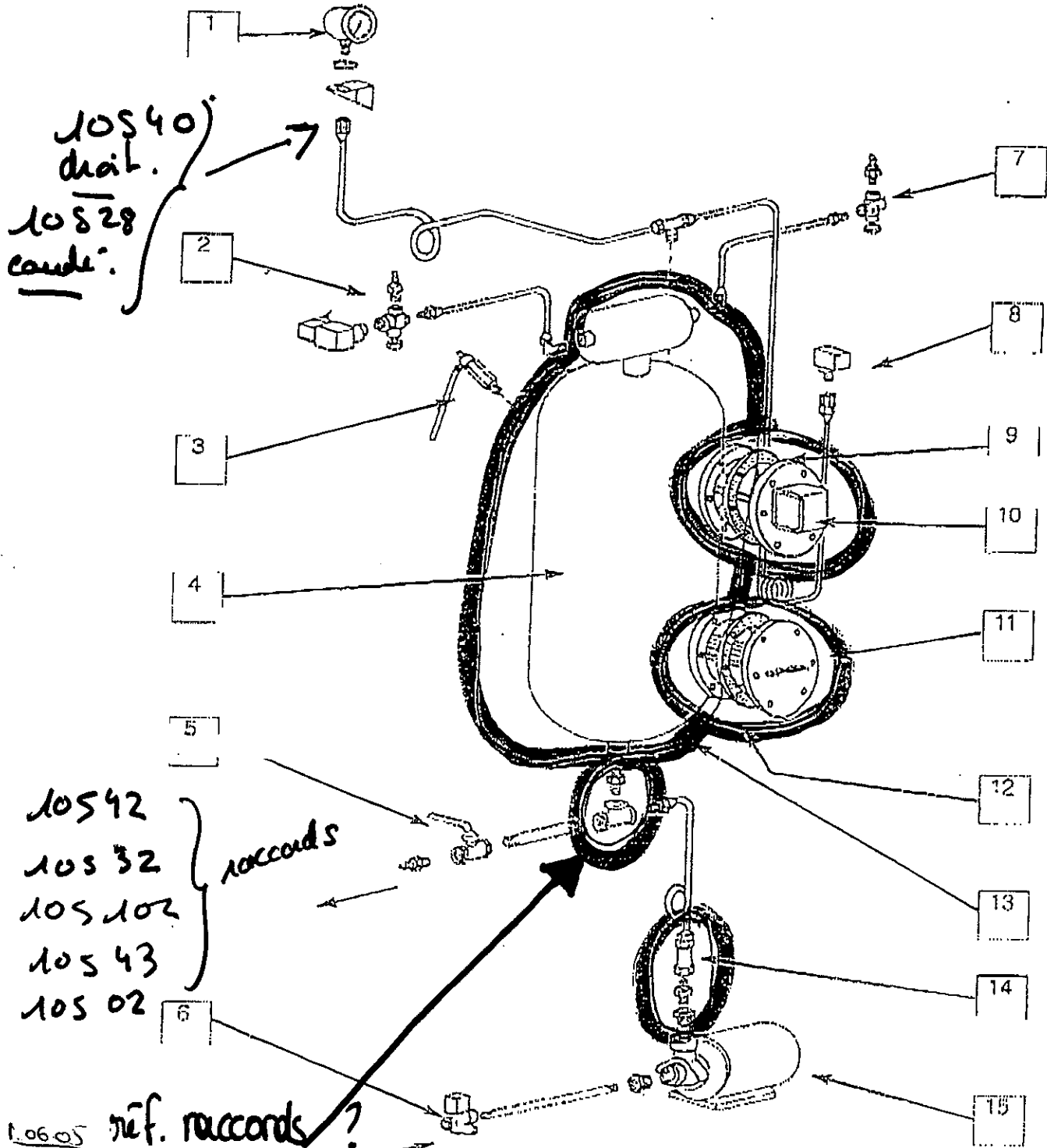
F			D		
NR.	DESCRIPTION	CODE	NR.	BESCHREIBUNG	KODEX
1	-MANOMETRE PRESSION VAPEUR.(0-6bar)	119.01	1	-MANOMETER DRUCK DAMPFKESSEL	119.01
2	-SOUPAPE DE SECURITE (5bar)	127.11	2	-SICHEREITSVENTIL (5bar)	127.11
3	-BANDE (15-25)	121.01	3	-BANDEROLE(dm.16-25)	121.01
4	-TUYAU SOUPAPE DE SECURITE	127.08	4	-ROHR FUR SICHEREITSVENTIL	127.08
5	-COUVERTURE CHAUDIERE (5ft)	401.08	5	-VERKLEIDUNG DAMPFKESSEL (5ft)	401.08
	(7ft)	401.07		(7ft)	401.07
6	-SOUPAPE DE RETENUE 3/8	127.02	6	-RUCKSCHLAGVENTIL 3/8	127.02
7	-POMPE	103.17	7	-PUMPE	103.17
8	-SOUPAPE ELECTRIQUE AVEC FILTRE 3/8	110.06	8	-MAGNETVENTIL MIT FILTER 3/8	110.06
9	-ROBINET A BILLE POUR DECHARGE CHAUDIERE 3/8	102.03	9	-AUSLABHAHM	102.03
10	-RESISTANCE CHAUDIERE	allegato H	10	-GEFLANSCHTER WIDERSTAND	allegato H
11	-GARNITURE RESISTANCE (dm.129)	125.09	11	-DICHTUNG WIDERSTAND (dm.129)	125.09
12	-COUVERCLE RESISTANCE (dm.125)	124.36	12	-DECKEL WIDERSTAND (dm.125)	124.36
13	-REGULATEUR DE NIVEAU (mercurio)	109.01	13	-ELECTRONIVEAU (mercurio)	109.01
	(cel)	109.02		(cel)	109.02
14	-GARNITURE REGULATEUR DE NIVEAU (dm.129)	125.09	14	-DICHTUNG ELEKTRONIVEAU (dm.129)	125.09
15	-PRESSOSTAT CHAUDIERE	120.01	15	-DRUCKWACHTER DAMPFKESSEL	120.01
16	-ELECTROVANNE VAPEUR AVEC REGULATION	110.04	16	-MAGNETVENTIL DAMPF+REG.	110.04
		110.05			110.05



N°.	DENOMINAZIONE DENOMINATION	DENOMINATION BENENNUNG	CODICE CODE	
			CODE	KODEX
1	RESISTENZA FLANGIATA 2 ELEMENTI 3500W		124.02	
	RESISTENZA FLANGIATA 3 ELEMENTI 3500W		124.06	
	RESISTENZA FLANGIATA 3 ELEMENTI 4700W		124.08	
	RESISTENZA FLANGIATA 3 ELEMENTI 6000W		124.03	
	2 ELEMENTS FLANGED RESISTANCE 3500W		124.02	
	3 ELEMENTS FLANGED RESISTANCE 3500W		124.06	
	3 ELEMENTS FLANGED RESISTANCE 4700W		124.08	
	3 ELEMENTS FLANGED RESISTANCE 6000W		124.03	
	RESISTANCE A BRIDE 2 ELEMENT 3500W		124.02	
	RESISTANCE A BRIDE 3 ELEMENT 3500W		124.06	
	RESISTANCE A BRIDE 3 ELEMENT 4700W		124.08	
	RESISTANCE A BRIDE 3 ELEMENT 6000W		124.03	
2	GEFLANSCHTER WIDERSTAND 2 ELEMENT 3500W		124.02	
	GEFLANSCHTER WIDERSTAND 3 ELEMENT 3500W		124.06	
	GEFLANSCHTER WIDERSTAND 3 ELEMENT 4700W		124.08	
	GEFLANSCHTER WIDERSTAND 3ELEMENT 6000W		124.03	
	GUARNIZIONE 129		125.09	
GASKET 129		125.09		
GARNITURE 129		125.09		
DICHTUNG 129		125.09		

-SCHEMA IMPIANTO IDRAULICO
-HYDRAULIC DIAGRAM

-SCHEMA INSTALLATION HYDRAULIQUE
-HYDRAULISCHES SCHEMA



1.06.05 réf. raccords ?
Demande bf cccHI concernant raccords chaudiere.

**-LISTA COMPONENTI IDRAULICI
-HYDRAULIC COMPONENT LIST**

**-LISTE DES COMPOSANTS HYDRAULIQUES
-LISTE DER HYDRAULISCHEN NESTANDTEILE**

POSIZIONE POSITION POSITION POSITION	DENOMINAZIONE DENOMINATION	DENOMINATION BENENNUNG	CODICE CODE CODE KODEX
1	-Manometro -Pressure gauge	-Manometre -Manometer	119.03
2	-Elettrovalvola vapore con regolazione -Steam solenoid valve with regulation	-Electrovanne vapeur avec réglage -Elektro-Dampfventil mit Regulierung	110.05 110.04
3	-Valvola di sicurezza -Safety valve	-Soupape de sécurité -Sicherheitsventil	127.08
4	-Copertura caldaia -Boiler covering	-Couverture chaudière -Deckung-Dampfkessel	*401.08 **401.07
5	-Rubinetto a sfera per scanco caldaia -Ball valve for water drainage	-Robinet a sphere écoulement hydrique -kugelformiger Wasserauslabhahn	102.09
6	-Elettrovalvola con filtro -Steam solenoid valve with filter	-Electrovanne a'eau avec filtre -Elektroventil mit filter	110.06
7	-Elettrovalvola vapore con regolazione -Steam solenoid valve with regulation	-Electrovanne vapeur avec réglage -Elektro-Dampfventil mit Regulierung	110.05 110.04
8	-Pressostato (3bar-7Lt);(3,5bar-5Lt) -Pressure switch (3bar-7Lt);(3,5bar-5Lt)	-Pressostat (3bar-7Lt);(3,5-5Lt) -Druckmesser (3bar-7Lt);(3,5-5Lt)	120.01
9	-Guarnizione elettrolivello -Gasket for level regulator	-Garniture pour regulateur de niveau -Dichtung mit schwimmershalter	125.09
10	-Elettrolivello (*/**) -Level regulator (*/**)	-Regulateur de niveau (*/**) -schwimmershalter (*/**)	* 109.01 **109.02
11	-Resistenza caldaia (3500/4700/6000)W -Boiler resistance (3500/4700/6000)W	-Résistance chaudière (3500/4700/6000) -Dampferzeugerheizung(3500/4700/6000)	124.06/124.08/124.03
12	-Guarnizione resistenza -Gasket for resistance	-Garniture pour résistance -Dichtung mit widerstand	125.09
13	-Caldaia (5Lt-7Lt) -Boiler (5Lt-7Lt)	-Chaudière (5Lt-7Lt) -Dampfkessel (5Lt-7Lt)	*000.03 **000.02
14	-Valvola di non ritorno 3/8 -Nonreturn valve 3/8	-Soupape de non retour 3/8 -Absperrventil 3/8	127.02
15	-Elettropompa -Electropump	-Electropompe -Wasserpumpe	103.17

*ASP/1 CON CALDAIA 5LT
*ASP/1 WITH 5LT BOILER
*ASP/1 AVEC CHAUDIERE 5LT
*ASP/1 MIT DAMPKESSEL 5LT

**ASP/1 CON CALDAIA 7LT
**ASP/1 WITH 7LT BOILER
**ASP/1 AVEC CHAUDIERE 7LT
**ASP/1 MIT DAMPKESSEL 7LT

**EBERHARDT FRERES**

Service après vente

ARIANE**ASP/1**

-

N° de série début: IDEM STIRO A

N° de série fin: -

Produit : CATA 2001 TABLE A REPASSER STIRO A CO1/03/2004

Famille : Repassage Générateurs de vapeur Professionnel

Page	Position	Référence	Qte	Designation
1	1	11203	0	HOUSSE DE TABLE ASP1 1260 X 500
1	2	11301	0	MOLLETON DE TABLE ASP1
1	3	11219	0	GRILLE TABLE ASP1
1	4	12439	0	RESISTANCE PLATEAU 1000W 1150MM
1	5	17101	0	ANTENNE
1	6	10701	0	REPOSE FER
1	7	13203	0	RESSORT DE SUSPENSION FER
1	7	13206	0	BOUCHON PRISE FER
1	8	108-05	0	MOTEUR ASPIRANT AM25N CG/S-ASP/1
1	9	13101	0	TENDEUR DE HOUSSE
1	10	10401	0	CAPOT INTERRUPTEUR
1	11	10420	0	INTERRUPTEUR
1	12	11206	0	HOUSSE DE JANETTE 620 X 100
1	13	11303	0	MOLLETON DE JANETTE
1	14	14704	0	THERMOSTAT 85°
1	15	12442	0	RESISTANCE JEANETTE 200W 500MM
3	1	IN	0	ARTICLE NON REFERENCE NOUS CONSULTE
3	2	IN	0	ARTICLE NON REFERENCE NOUS CONSULTE
3	3	IN	0	ARTICLE NON REFERENCE NOUS CONSULTE
3	4	14702	0	THERMOSTAT TR2 0/120 CAP.1000
3	5	10411	0	MICRO CONTACT
3	6	13102	0	RESSORT DE PEDALE
5	1	10731	0	SEMELLE FERRO JOLY
5	2	10731	0	SEMELLE FERRO JOLY
5	3	IN	0	ARTICLE NON REFERENCE NOUS CONSULTE
5	4	IN	0	ARTICLE NON REFERENCE NOUS CONSULTE
5	5	10726	0	TUYAU VAPEUR (2 METRES)
5	5	10739	0	TUYAU VAPEUR 5X12
5	5	10725	0	TUYAU VAPEUR (METRE)
5	6	10720	0	Raccord vapeur coude semelle jolly
5	7	12101	0	COLLIER POUR TUYAU VAPEUR
5	8	IN	0	ARTICLE NON REFERENCE NOUS CONSULTE
5	9	14706	0	THERMOSTAT FER JOLLY AVEC FUSIBLE
5	10	10404	0	MICRO-INTERRUPTEUR
5	16	10732	0	CABLE
5	16	10728	0	CABLE D'ALIMENTATION FER 2M50
5	16	10727	0	CABLE ELECTRIQUE (METRE)
5	17	10742	0	POIGNEE
5	18	10729	0	FUSIBLE THERMIQUE
7	1	10316	0	POMPE A EAU CG-AT 5bars TRI
8	5	10902	0	NIVEAU A MERCURE
8	5	10901	0	MICROSWITCH REGULATEUR NIVEAU ASP1
8	26	IN	0	ARTICLE NON REFERENCE NOUS CONSULTE
8	27	10903	0	BOULE FLOTTEUR INOX
9	1	11010	0	ELECTROVANNE VAPEUR
9	3	11003	0	BOBINE DE REMPLISSAGE 220V
9	3	11001	0	BOBINE DE REMPLISSAGE 24V
9	4	IN	0	ARTICLE NON REFERENCE NOUS CONSULTE
9	5	IN	0	ARTICLE NON REFERENCE NOUS CONSULTE
9	8	11008	0	CONNECTEUR POUR BOBINE

DIVISION ELECTROMENAGER - DIVISION PROFESSIONNELLE

EBERHARDT FRERES, 18 RUE DES FRERES EBERTS, BOITE POSTALE 83, F-67024 STRASBOURG CEDEX 1,

TELEPHONE 03 88 65 71 71 - FAX CIAL 03 88 39 28 58 FAX SAV - FAX SAV 03 88 40 24 34

Minitel SAV : 3615 EFSAV - Site internet SAV <http://sav.eberhardt.fr>

Société anonyme au capital de 2.100.000 F, R.C. Strasbourg B 578 503 112, C.C.P. Strasbourg 531-94P



EBERHARDT FRERES

Service après vente

ARIANE

ASP/1

-

N° de série début: IDEM STIRO A

N° de série fin: -

Produit : CATA 2001 TABLE A REPASSER STIRO A CO1/03/2004

Famille : Repassage Générateurs de vapeur Professionnel

Page	Position	Référence	Qte	Designation
9	11	IN	0	ARTICLE NON REFERENCE NOUS CONSULTE
9	12	11015	0	MANETTE
11	1	13710	0	FUSIBLE 3A
11	2	13710	0	FUSIBLE 3A
11	3	IN	0	ARTICLE NON REFERENCE NOUS CONSULTE
11	4	13702	0	PORTE FUSIBLE
11	5	IN	0	ARTICLE NON REFERENCE NOUS CONSULTE
11	6	IN	0	ARTICLE NON REFERENCE NOUS CONSULTE
11	7	12801	0	CONTACTEUR DE CHAUFFAGE
11	8	IN	0	ARTICLE NON REFERENCE NOUS CONSULTE
11	9	IN	0	ARTICLE NON REFERENCE NOUS CONSULTE
11	10	IN	0	ARTICLE NON REFERENCE NOUS CONSULTE
11	11	IN	0	ARTICLE NON REFERENCE NOUS CONSULTE
11	12	IN	0	ARTICLE NON REFERENCE NOUS CONSULTE
11	13	10424	0	INTERRUPTEUR M/A DU FER
11	14	10424	0	INTERRUPTEUR M/A DU FER
13	1	10424	0	INTERRUPTEUR M/A DU FER
13	2	13702	0	PORTE FUSIBLE
13	3	IN	0	ARTICLE NON REFERENCE NOUS CONSULTE
13	4	10406	0	VOYANT LUMINEUX
13	5	108-05	0	MOTEUR ASPIRANT AM25N CG/S-ASP/1
13	6	12439	0	RESISTANCE PLATEAU 1000W 1150MM
13	7	12442	0	RESISTANCE JEANETTE 200W 500MM
13	8	IN	0	ARTICLE NON REFERENCE NOUS CONSULTE
13	9	10402	0	INTERRUPTEUR LUMINEUX
13	10	10420	0	INTERRUPTEUR
13	11	14702	0	THERMOSTAT TR2 0/120 CAP.1000
13	12	12001	0	PRESSOSTAT SC6 1/4 250V
13	13	10402	0	INTERRUPTEUR LUMINEUX
15	1	11901	0	MANOMETRE
15	2	12711	0	SOUPAPE DE SECURITE 6,5 BARS 1/2"
15	3	12101	0	COLLIER POUR TUYAU VAPEUR
15	4	12707	0	SOUPAPE DE SECURITE 5 BARS 3/8"
15	5	40107	0	HOUSSE CHAUDIERE 7 LITRES
15	6	IN	0	ARTICLE NON REFERENCE NOUS CONSULTE
15	7	10315	0	POMPE A EAU ASP1-ASP5-ASP4B
15	8	11006CH	0	ELECTROVANNE EAU COCCHI
15	9	10203	0	ROBINET VAPEUR ROUGE 3/8"
15	11	12509	0	JOINT DE BRIDE RESISTANCE
15	12	12436	0	CACHE
15	13	10902	0	NIVEAU A MERCURE
15	13	10901	0	MICROSWITCH REGULATEUR NIVEAU ASP1
15	14	12509	0	JOINT DE BRIDE RESISTANCE
15	15	12001	0	PRESSOSTAT SC6 1/4 250V
15	16	11005	0	ELECTROVANNE CEME DM 2,8 9922 REG.
16	1	12406	0	RESISTANCE 3500 W GV5
16	1	12403	0	RESISTANCE 6000W
16	1	12408	0	RESISTANCE 4700W GV5
16	1	12402	0	RESISTANCE
16	2	12509	0	JOINT DE BRIDE RESISTANCE

DIVISION ELECTROMENAGER - DIVISION PROFESSIONNELLE

EBERHARDT FRERES, 18 RUE DES FRERES EBERTS, BOITE POSTALE 83, F-67024 STRASBOURG CEDEX 1,

TELEPHONE 03 88 65 71 71 - FAX CIAL 03 88 39 28 58 FAX SAV - FAX SAV 03 88 40 24 34

Minitel SAV : 3615 EFSAV - Site internet SAV <http://sav.eberhardt.fr>

Société anonyme au capital de 2.100.000 F, R.C. Strasbourg B 578 503 112, C.C.P. Strasbourg 531-94P